

### Anti-Rad53 antibody ab104232

★★★★★ [3 Abreviews](#) [59 References](#) [4 图像](#)

#### 概述

产品名称	Anti-Rad53抗体
描述	兔多克隆抗体to Rad53
宿主	Rabbit
经测试应用	适用于: WB
种属反应性	与反应: <i>Saccharomyces cerevisiae</i>
免疫原	Synthetic peptide corresponding to <i>Saccharomyces cerevisiae</i> Rad53 aa 800 to the C-terminus (C terminal) conjugated to keyhole limpet haemocyanin. (Peptide available as <a href="#">ab134635</a> )
常规说明	<p>The Life Science industry has been in the grips of a reproducibility crisis for a number of years. Abcam is leading the way in addressing this with our range of recombinant monoclonal antibodies and knockout edited cell lines for gold-standard validation. Please check that this product meets your needs before purchasing.</p> <p>If you have any questions, special requirements or concerns, please send us an inquiry and/or contact our Support team ahead of purchase. Recommended alternatives for this product can be found below, along with publications, customer reviews and Q&amp;As</p>

#### 性能

形式	Liquid
存放说明	Shipped at 4°C. Store at +4°C short term (1-2 weeks). Upon delivery aliquot. Store at -20°C or -80°C. Avoid freeze / thaw cycle.
存储溶液	<p>pH: 7.40</p> <p>Preservative: 0.02% Sodium azide</p> <p>Constituent: PBS</p> <p>Batches of this product that have a concentration &lt; 1mg/ml may have BSA added as a stabilising agent. If you would like information about the formulation of a specific lot, please contact our scientific support team who will be happy to help.</p>
纯度	Immunogen affinity purified
克隆	多克隆
同种型	IgG

## 应用

### The Abpromise guarantee

**Abpromise™** 承诺保证使用ab104232于以下的经测试应用

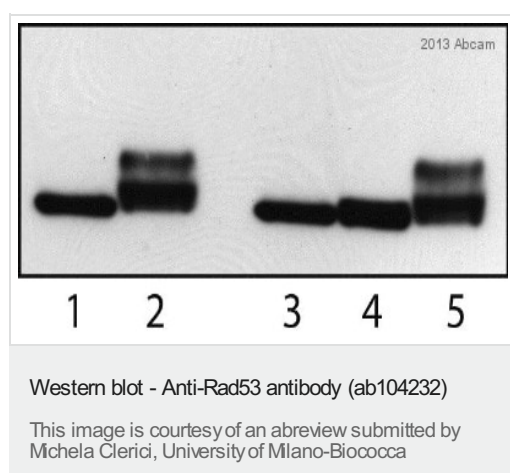
“应用说明”部分 下显示的仅为推荐的起始稀释度;实际最佳的稀释度/浓度应由使用者检定。

应用	Ab评论	说明
WB	★★★★★ (3)	1/2000. Detects a band of approximately 92 kDa (predicted molecular weight: 92 kDa). Abcam recommends using milk as the blocking agent (4%)

## 靶标

功能	Controls S-phase checkpoint as well as G1 and G2 DNA damage checkpoints. Phosphorylates proteins on serine, threonine, and tyrosine. Prevents entry into anaphase and mitotic exit after DNA damage via regulation of the Polo kinase CDC5. Seems to be involved in the phosphorylation of RPH1.
序列相似性	Belongs to the protein kinase superfamily. CAMK Ser/Thr protein kinase family. CHEK2 subfamily. Contains 2 FHA domains. Contains 1 protein kinase domain.
结构域	FHA domains are phosphothreonine recognition modules, FHA 1 strongly selects for Asp at position +3 relative to phosphothreonine, whereas FHA 2 selects for Ile in this position.
翻译后修饰	Autophosphorylated.
细胞定位	Nucleus.

## 图片



**All lanes :** Anti-Rad53 antibody (ab104232) at 1/2000 dilution

**Lane 1 :** Saccharomyces cerevisiae whole cell lysate from exponentially growing cells- TCA prep.

**Lane 2 :** Saccharomyces cerevisiae whole cell lysate from exponentially growing cells treated with 20mg/ml phleomycin for 1 hour - TCA prep

**Lane 3 :** Saccharomyces cerevisiae whole cell lysate from exponentially growing cells- TCA prep

**Lane 4 :** Saccharomyces cerevisiae whole cell lysate from exponentially growing cells arrested in G2 phase with nocodazole- TCA prep.

**Lane 5 :** Saccharomyces cerevisiae whole cell lysate from exponentially growing cells arrested in G2 phase with nocodazole and treated with 20mg/ml phleomycin- TCA prep.

Lysates/proteins at 20 µg per lane.

### Secondary

**All lanes :** Amersham anti-rabbit IgG conjugated to HRP at 1/10000 dilution

Developed using the ECL technique.

Performed under reducing conditions.

**Predicted band size:** 92 kDa

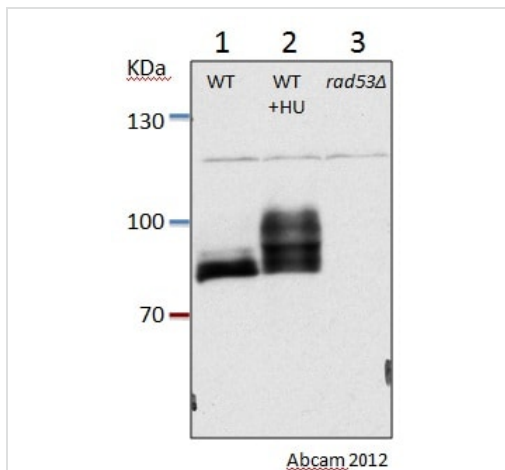
**Observed band size:** 92 kDa

**Additional bands at:** >92 kDa (possible post-translational modification)

**Exposure time:** 2 minutes

**Blocking:** 4% milk for 1 hour

Phosphorylation of Rad53 induced by phleomycin treatment see PubmedID:152856



Western blot - Anti-Rad53 antibody (ab104232)

This image is courtesy of Ilaria Guerini, Gurdon Institute, United Kingdom

**All lanes :** Anti-Rad53 antibody (ab104232) at 1/2000 dilution

**Lane 1 :** TCA preps from exponentially growing WT yeast cells.

**Lane 2 :** TCA preps from exponentially growing WT yeast cells treated with Hydroxyurea (HU).

**Lane 3 :** TCA preps from exponentially growing rad53delta yeast cells.

### Secondary

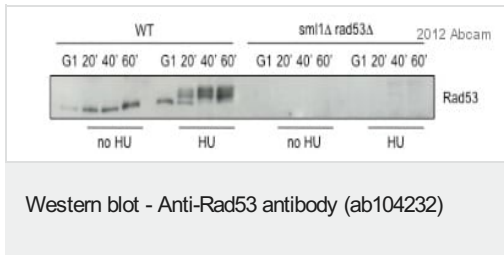
**All lanes :** 1/10000 dilution

Developed using the ECL technique.

Performed under reducing conditions.

**Predicted band size:** 92 kDa

**Exposure time:** 30 seconds



**All lanes :** Anti-Rad53 antibody (ab104232) at 1/1000 dilution

**Lanes 1 & 5 :** Alpha-factor arrested WT cells.

**Lane 2 :** WT cells 20' after release in S-phase.

**Lane 3 :** WT cells 40' after release in S-phase.

**Lane 4 :** WT cells 60' after release in S-phase.

**Lane 6 :** WT cells 20' after release in S-phase in 200mM HU.

**Lane 7 :** WT cells 40' after release in S-phase in 200mM HU.

**Lane 8 :** WT cells 60' after release in S-phase in 200mM HU.

**Lanes 9 & 13 :** Alpha-factor arrested rad53delta cells.

**Lane 10 :** rad53delta cells 20' after release in S-phase.

**Lane 11 :** rad53delta cells 40' after release in S-phase.

**Lane 12 :** rad53delta cells 60' after release in S-phase.

**Lane 14 :** rad53delta cells 20' after release in S-phase in 200mM HU.

**Lane 15 :** rad53delta cells 40' after release in S-phase in 200mM HU.

**Lane 16 :** rad53delta cells 60' after release in S-phase in 200mM HU.

### Secondary

**All lanes :** Donkey Anti-Rabbit IgG H&L (HRP) (**ab16284**) at 1/2000 dilution

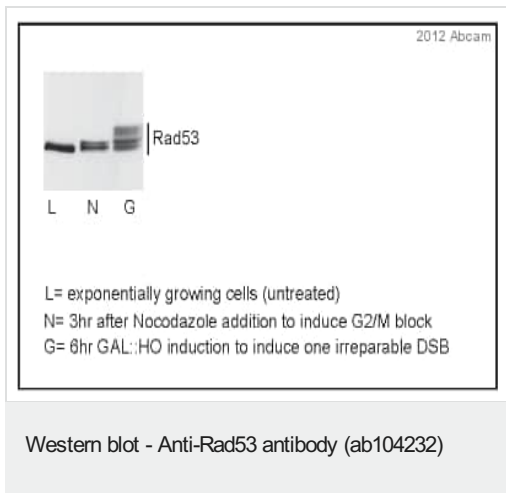
Developed using the ECL technique.

Performed under reducing conditions.

**Predicted band size:** 92 kDa

**Additional bands at:** 92 kDa (possible post-translational modification)

**Exposure time:** 2 minutes



Western blot showing ab104232 detecting Rad53 in both its unphosphorylated and phosphorylated status. ab104232 was used at 1:2000 dilution.

**Please note:** All products are "FOR RESEARCH USE ONLY. NOT FOR USE IN DIAGNOSTIC PROCEDURES"

### Our Abpromise to you: Quality guaranteed and expert technical support

---

- Replacement or refund for products not performing as stated on the datasheet
- Valid for 12 months from date of delivery
- Response to your inquiry within 24 hours
- We provide support in Chinese, English, French, German, Japanese and Spanish
- Extensive multi-media technical resources to help you
- We investigate all quality concerns to ensure our products perform to the highest standards

If the product does not perform as described on this datasheet, we will offer a refund or replacement. For full details of the Abpromise, please visit <https://www.abcam.cn/abpromise> or contact our technical team.

### Terms and conditions

---

- Guarantee only valid for products bought direct from Abcam or one of our authorized distributors