


### Anti-Rad51C antibody ab3669

**2 References**   **1 图像**

#### 概述

产品名称	Anti-Rad51C抗体
描述	山羊多克隆抗体to Rad51C
宿主	Goat
特异性	This antibody is expected to recognise all three human isoforms.
经测试应用	适用于: WB
种属反应性	与反应: Human
免疫原	Synthetic peptide: RGKTRFEMQRDL , corresponding to N terminal amino acids 2-14 of Human Rad51C.  <a href="#">Run BLAST with</a>  <a href="#">Run BLAST with</a>
阳性对照	HeLa lysate.
常规说明	Principal Names – RAD51C; RAD51L2; RAD51 homolog C (S. cerevisiae); yeast RAD51 homolog 3; DNA repair protein RAD51 homolog 3 Official Gene Symbol - RAD51C GenBank Accession Number – NP_002867; NP_478123; NP_478124 LocusLink ID - 5889 (human) Gene Ontology terms - adenosinetriphosphatase activity; DNA binding activity; DNA repair; DNA recombination; nucleus.  The Life Science industry has been in the grips of a reproducibility crisis for a number of years. Abcam is leading the way in addressing this with our range of recombinant monoclonal antibodies and knockout edited cell lines for gold-standard validation. Please check that this product meets your needs before purchasing.  If you have any questions, special requirements or concerns, please send us an inquiry and/or contact our Support team ahead of purchase. Recommended alternatives for this product can be found below, along with publications, customer reviews and Q&As

#### 性能

形式	Liquid
存放说明	Shipped at 4°C. Upon delivery aliquot and store at -20°C or -80°C. Avoid repeated freeze / thaw cycles.
存储溶液	pH: 7.30 Preservative: 0.02% Sodium azide

	Constituents: 0.5% Tris, 0.5% BSA
纯化说明	Purified from goat serum by ammonium sulphate precipitation followed by antigen affinity chromatography using the immunizing peptide.
克隆	多克隆
同种型	IgG

应用

The Abpromise guarantee      **Abpromise™**承诺保证使用ab3669于以下的经测试应用

“应用说明”部分 下显示的仅为推荐的起始稀释度;实际最佳的稀释度/浓度应由使用者检定。

应用	Ab评论	说明
WB		Use a concentration of 1 - 3 µg/ml. Detects a band of approximately 45 kDa (predicted molecular weight: 43 kDa). 1 hour primary incubation is recommended for this product.

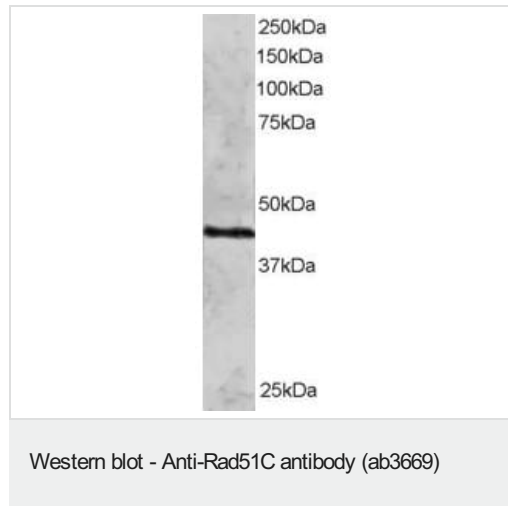
靶标

功能	<p>Essential for the homologous recombination (HR) pathway of DNA repair. Involved in the homologous recombination repair (HRR) pathway of double-stranded DNA breaks arising during DNA replication or induced by DNA-damaging agents. The RAD51B-RAD51C dimer exhibits single-stranded DNA-dependent ATPase activity. The BCDX2 complex binds single-stranded DNA, single-stranded gaps in duplex DNA and specifically to nicks in duplex DNA. Participates in branch migration and Holliday junction resolution and thus is important for processing HR intermediates late in the DNA repair process. Also has an early function in DNA repair in facilitating phosphorylation of the checkpoint kinase CHK2 and thereby transduction of the damage signal, leading to cell cycle arrest and HR activation. Protects RAD51 from ubiquitin-mediated degradation that is enhanced following DNA damage. Plays a role in regulating mitochondrial DNA copy number under conditions of oxidative stress in the presence of RAD51 and XRCC3. Contributes to DNA cross-link resistance, sister chromatid cohesion and genomic stability. Involved in maintaining centrosome number in mitosis.</p>
组织特异性	Expressed in a variety of tissues, with highest expression in testis, heart muscle, spleen and prostate.
疾病相关	<p>Defects in RAD51C are the cause of Fanconi anemia complementation group O (FANCO) [MIM:613390]. It is a disorder affecting all bone marrow elements and resulting in anemia, leukopenia and thrombopenia. It is associated with cardiac, renal and limb malformations, dermal pigmentary changes, and a predisposition to the development of malignancies. At the cellular level it is associated with hypersensitivity to DNA-damaging agents, chromosomal instability (increased chromosome breakage) and defective DNA repair.</p> <p>Defects in RAD51C are the cause of breast-ovarian cancer familial type 3 (BROVCA3) [MIM:613399]. It is a condition associated with familial predisposition to cancer of the breast and ovaries. Characteristic features in affected families are an early age of onset of breast cancer (often before age 50), increased chance of bilateral cancers (cancer that develop in both breasts, or both ovaries, independently), frequent occurrence of breast cancer among men, increased incidence of tumors of other specific organs, such as the prostate.</p>
序列相似性	Belongs to the RecA family. RAD51 subfamily.

## 细胞定位

Nucleus. Cytoplasm. Cytoplasm > perinuclear region. Mitochondrion. DNA damage induces an increase in nuclear levels. Accumulates in DNA damage induced nuclear foci or RAD51C foci which is formed during the S or G2 phase of cell cycle. Accumulation at DNA lesions requires the presence of NBN/NBS1, ATM and RPA.

## 图片



ab3669 staining (2 $\mu$ g/ml) of HeLa lysate (RIPA buffer, 30 $\mu$ g total protein per lane). Primary incubated for 12 hours. Detected by western blot using chemiluminescence. ab3669 staining (2 $\mu$ g/ml) of HeLa lysate (RIPA buffer, 30 $\mu$ g total protein per lane). Primary incubated for 12 hours. Detected by western blot using chemiluminescence.

**Please note:** All products are "FOR RESEARCH USE ONLY. NOT FOR USE IN DIAGNOSTIC PROCEDURES"

## Our Abpromise to you: Quality guaranteed and expert technical support

- Replacement or refund for products not performing as stated on the datasheet
- Valid for 12 months from date of delivery
- Response to your inquiry within 24 hours
- We provide support in Chinese, English, French, German, Japanese and Spanish
- Extensive multi-media technical resources to help you
- We investigate all quality concerns to ensure our products perform to the highest standards

If the product does not perform as described on this datasheet, we will offer a refund or replacement. For full details of the Abpromise, please visit <https://www.abcam.cn/abpromise> or contact our technical team.

## Terms and conditions

- Guarantee only valid for products bought direct from Abcam or one of our authorized distributors