


Anti-Rad51 (phospho T309) antibody ab111568

[3 References](#) [1 图像](#)

概述

| | |
|-------|---|
| 产品名称 | Anti-Rad51 (phospho T309)抗体 |
| 描述 | 兔多克隆抗体to Rad51 (phospho T309) |
| 宿主 | Rabbit |
| 经测试应用 | 适用于: IHC-P |
| 种属反应性 | 与反应: Human 预测可用于: Mouse  |
| 免疫原 | Synthetic peptide corresponding to Human Rad51 (phospho T309). |
| 阳性对照 | Human breast carcinoma tissue. |
| 常规说明 | <p>The Life Science industry has been in the grips of a reproducibility crisis for a number of years. Abcam is leading the way in addressing this with our range of recombinant monoclonal antibodies and knockout edited cell lines for gold-standard validation. Please check that this product meets your needs before purchasing.</p> <p>If you have any questions, special requirements or concerns, please send us an inquiry and/or contact our Support team ahead of purchase. Recommended alternatives for this product can be found below, along with publications, customer reviews and Q&As</p> |

性能

| | |
|------|--|
| 形式 | Liquid |
| 存放说明 | Shipped at 4°C. Store at -20°C. Stable for 12 months at -20°C. |
| 存储溶液 | pH: 7 Preservative: 0.02% Sodium azide Constituents: 49% PBS, 50% Glycerol (glycerin, glycerine), 0.88% Sodium chloride |
| 纯度 | Immunogen affinity purified |
| 纯化说明 | ab111568 was affinity-purified from rabbit antiserum by affinity-chromatography using epitope-specific phosphopeptide. The antibody against non-phosphopeptide was removed by chromatography using non-phosphopeptide corresponding to the phosphorylation site. |
| 克隆 | 多克隆 |
| 同种型 | IgG |

应用

The Abpromise guarantee

Abpromise™承诺保证使用ab111568于以下的经测试应用

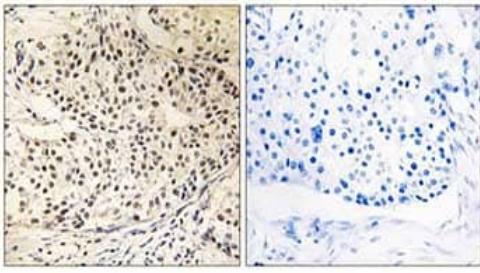
“应用说明”部分 下显示的仅为推荐的起始稀释度;实际最佳的稀释度/浓度应由使用者检定。

| 应用 | Ab评论 | 说明 |
|-------|------|--|
| IHC-P | | 1/50 - 1/100. Perform heat mediated antigen retrieval with citrate buffer pH 6 before commencing with IHC staining protocol. |

靶标

| | |
|--------------|--|
| 功能 | Plays an important role in homologous strand exchange, a key step in DNA repair through homologous recombination. Binds to single and double-stranded DNA and exhibits DNA-dependent ATPase activity. Catalyzes the recognition of homology and strand exchange between homologous DNA partners to form a joint molecule between a processed DNA break and the repair template. Binds to single-stranded DNA in an ATP-dependent manner to form nucleoprotein filaments which are essential for the homology search and strand exchange (PubMed:26681308). Part of a PALB2-scaffolded HR complex containing BRCA2 and RAD51C and which is thought to play a role in DNA repair by HR. Plays a role in regulating mitochondrial DNA copy number under conditions of oxidative stress in the presence of RAD51C and XRCC3. |
| 组织特异性 | Highly expressed in testis and thymus, followed by small intestine, placenta, colon, pancreas and ovary. Weakly expressed in breast. |
| 疾病相关 | Breast cancer Mirror movements 2 Defects in RAD51 are found in a patient with microcephaly, mental retardation without bone marrow failure and pediatric cancers. |
| 序列相似性 | Belongs to the RecA family. RAD51 subfamily. Contains 1 HhH domain. |
| 结构域 | The nuclear localization may reside in the C-terminus (between 259 and 339 AA). |
| 翻译后修饰 | Ubiquitinated by the SCF(FBXO18) E3 ubiquitin ligase complex, regulating RAD51 subcellular location and preventing its association with DNA. Phosphorylated. Phosphorylation of Thr-309 by CHEK1 may enhance association with chromatin at sites of DNA damage and promote DNA repair by homologous recombination. Phosphorylation by ABL1 inhibits function. |
| 细胞定位 | Nucleus. Cytoplasm. Cytoplasm, perinuclear region. Mitochondrion matrix. Cytoplasm, cytoskeleton, microtubule organizing center, centrosome. Colocalizes with RAD51AP1 and RPA2 to multiple nuclear foci upon induction of DNA damage. DNA damage induces an increase in nuclear levels. Together with FIGNL1, redistributed in discrete nuclear DNA damage-induced foci after ionizing radiation (IR) or camptothecin (CPT) treatment. Accumulated at sites of DNA damage in a SPIDR-dependent manner. |

图片



ab111568, at 1/50 dilution, staining Rad51 in paraffin-embedded Human breast carcinoma tissue by Immunohistochemistry, in the presence (right panel) or absence (left panel) of immunising peptide.

Immunohistochemistry (Formalin/PFA-fixed paraffin-embedded sections) - Anti-Rad51 (phospho T309) antibody (ab111568)

Please note: All products are "FOR RESEARCH USE ONLY. NOT FOR USE IN DIAGNOSTIC PROCEDURES"

Our Abpromise to you: Quality guaranteed and expert technical support

- Replacement or refund for products not performing as stated on the datasheet
- Valid for 12 months from date of delivery
- Response to your inquiry within 24 hours
- We provide support in Chinese, English, French, German, Japanese and Spanish
- Extensive multi-media technical resources to help you
- We investigate all quality concerns to ensure our products perform to the highest standards

If the product does not perform as described on this datasheet, we will offer a refund or replacement. For full details of the Abpromise, please visit <https://www.abcam.cn/abpromise> or contact our technical team.

Terms and conditions

- Guarantee only valid for products bought direct from Abcam or one of our authorized distributors