


Anti-RAC3 antibody [EPR6679(B)] ab124943

重组 RabMAb

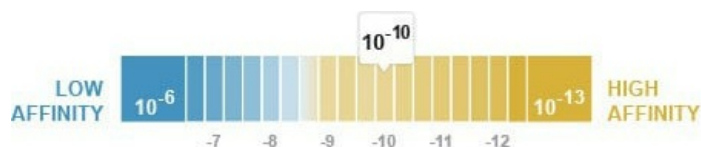
4 References **6 图像**

概述

产品名称	Anti-RAC3抗体[EPR6679(B)]
描述	兔单克隆抗体[EPR6679(B)] to RAC3
宿主	Rabbit
特异性	ab124943 cross-reacts with Rac1, Rac2 and Cdc42
经测试应用	适用于: WB, IHC-P, ICC/IF 不适用于: Flow Cyt or IP
种属反应性	与反应: Human 预测可用于: Mouse, Rat 
免疫原	Synthetic peptide within Human RAC3 aa 50-150. The exact sequence is proprietary.
阳性对照	Human heart tissue, Human placenta tissue; JAR cells; Human fetal brain lysate, SH-SY5Y, JAR and BxPC-3 cell lysates
常规说明	This product is a recombinant monoclonal antibody, which offers several advantages including: <ul style="list-style-type: none"> - High batch-to-batch consistency and reproducibility - Improved sensitivity and specificity - Long-term security of supply - Animal-free production For more information see here . Our RabMAb [®] technology is a patented hybridoma-based technology for making rabbit monoclonal antibodies. For details on our patents, please refer to RabMAb[®] patents .

性能

形式	Liquid
存放说明	Shipped at 4°C. Store at -20°C. Stable for 12 months at -20°C.
解离常数 (K_D)	K _D = 1.23 x 10 ⁻¹⁰ M



[Learn more about K_D](#)

存储溶液	pH: 7.20 Preservative: 0.05% Sodium azide Constituents: 40% Glycerol (glycerin, glycerine), 9.85% Tris glycine, 50% Tissue culture supernatant
纯度	Protein A purified
克隆	单克隆
克隆编号	EPR6679(B)
同种型	IgG

应用

The Abpromise guarantee **Abpromise™** 承诺保证使用 ab124943 于以下的经测试应用

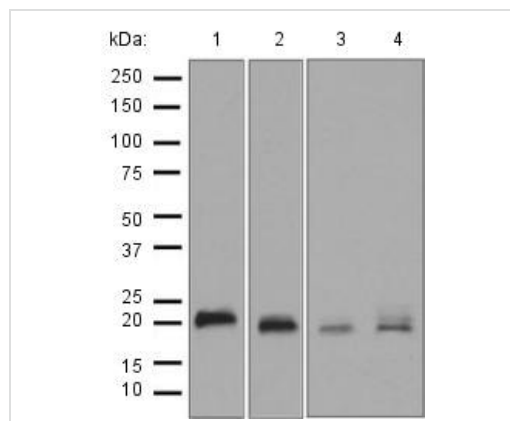
“应用说明”部分 下显示的仅为推荐的起始稀释度;实际最佳的稀释度/浓度应由使用者检定。

应用	Ab评论	说明
WB		1/1000 - 1/10000. Predicted molecular weight: 21 kDa.
IHC-P		1/50 - 1/100. Perform heat mediated antigen retrieval with citrate buffer pH 6 before commencing with IHC staining protocol. antigen retrieval is recommended.
ICC/IF		1/50 - 1/100.

应用说明 Is unsuitable for Flow Cyt or IP.

靶标

功能	Plasma membrane-associated small GTPase which cycles between an active GTP-bound and inactive GDP-bound state. In active state binds to a variety of effector proteins to regulate cellular responses, such as cell spreading and the formation of actin-based protrusions including lamellipodia and membrane ruffles. Promotes cell adhesion and spreading on fibrinogen in a CIB1 and alpha-IIb/beta3 integrin-mediated manner.
组织特异性	Highest levels in brain, also detected in heart, placenta and pancreas.
序列相似性	Belongs to the small GTPase superfamily. Rho family.
翻译后修饰	(Microbial infection) Glycosylated at Tyr-32 by Photorhabdus asymbiotica toxin PAU_02230. Mono-O-GlcNAcylation by PAU_02230 inhibits downstream signaling by an impaired interaction with diverse regulator and effector proteins of Rac and leads to actin disassembly.
细胞定位	Cytoplasm. Endomembrane system. Cell projection, lamellipodium. Cytoplasm, perinuclear region. Cell membrane. Cytoplasm, cytoskeleton. Membrane-associated when activated. Colocalizes with NRBP to endomembranes and at the cell periphery in lamellipodia. Colocalized with CIB1 in the perinuclear area and at the cell periphery.
形式	Rac3 has high sequence homology with other Rac proteins. Therefore some antibodies may show cross-reactivity.



Western blot - Anti-RAC3 antibody [EPR6679(B)] (ab124943)

All lanes : Anti-RAC3 antibody [EPR6679(B)] (ab124943) at 1/1000 dilution

Lane 1 : Human fetal brain tissue lysate

Lane 2 : SH-SY5Y cell lysate

Lane 3 : JAR cell lysate

Lane 4 : BxPC-3 cell lysate

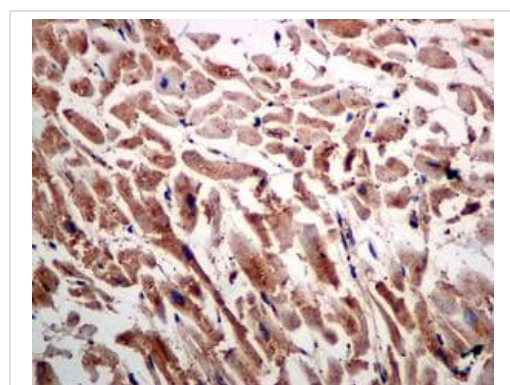
Lysates/proteins at 10 µg per lane.

Secondary

All lanes : standard HRP labelled goat anti-rabbit at 1/2000 dilution

Developed using the ECL technique.

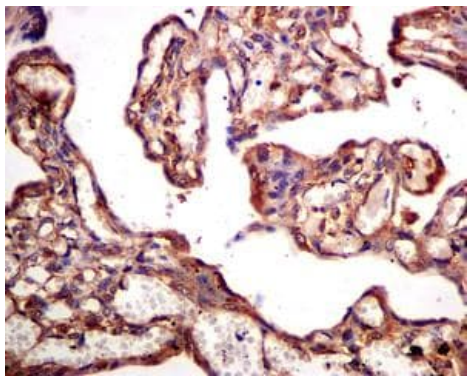
Predicted band size: 21 kDa



Immunohistochemistry (Formalin/PFA-fixed paraffin-embedded sections) - Anti-RAC3 antibody [EPR6679(B)] (ab124943)

ab124943, at a 1/50 dilution, staining RAC3 in paraffin-embedded Human heart tissue by immunohistochemistry

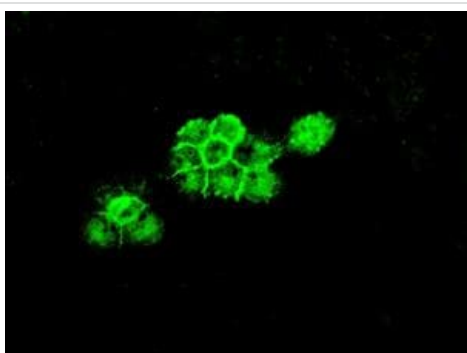
Perform heat mediated antigen retrieval with citrate buffer pH 6 before commencing with IHC staining protocol.



Immunohistochemistry (Formalin/PFA-fixed paraffin-embedded sections) - Anti-RAC3 antibody [EPR6679(B)] (ab124943)

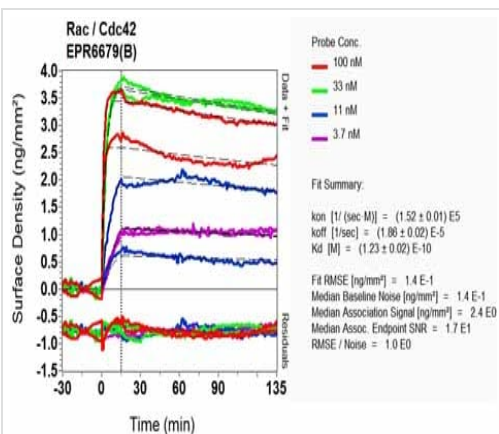
ab124943, at a 1/50 dilution, staining RAC3 in paraffin-embedded Human placenta tissue by immunohistochemistry

Perform heat mediated antigen retrieval with citrate buffer pH 6 before commencing with IHC staining protocol.



Immunocytochemistry/ Immunofluorescence - Anti-RAC3 antibody [EPR6679(B)] (ab124943)

ab124943, at a 1/50 dilution, staining RAC3 in JAR cells by immunofluorescence



OR-D Scanning - Anti-RAC3 antibody [EPR6679(B)] (ab124943)

Equilibrium dissociation constant (K_D)

Learn more about K_D

[Click here to learn more about \$K_D\$](#)

Why choose a recombinant antibody?



Research with confidence
Consistent and reproducible results



Long-term and scalable supply
Recombinant technology



Success from the first experiment
Confirmed specificity



Ethical standards compliant
Animal-free production

Anti-RAC3 antibody [EPR6679(B)] (ab124943)

Please note: All products are "FOR RESEARCH USE ONLY. NOT FOR USE IN DIAGNOSTIC PROCEDURES"

Our Abpromise to you: Quality guaranteed and expert technical support

- Replacement or refund for products not performing as stated on the datasheet
- Valid for 12 months from date of delivery
- Response to your inquiry within 24 hours
- We provide support in Chinese, English, French, German, Japanese and Spanish
- Extensive multi-media technical resources to help you
- We investigate all quality concerns to ensure our products perform to the highest standards

If the product does not perform as described on this datasheet, we will offer a refund or replacement. For full details of the Abpromise, please visit <https://www.abcam.cn/abpromise> or contact our technical team.

Terms and conditions

- Guarantee only valid for products bought direct from Abcam or one of our authorized distributors