

Anti-Rabphilin 3A antibody ab3338

★★★★★ [1 Abreviews](#) [3 References](#) [4 图像](#)

概述

产品名称	Anti-Rabphilin 3A抗体
描述	兔多克隆抗体to Rabphilin 3A
宿主	Rabbit
经测试应用	适用于: WB, ICC/IF
种属反应性	与反应: Mouse, Rat
免疫原	<p>Synthetic peptide corresponding to Rat Rabphilin 3A aa 1-18.</p> <p>Sequence:</p> <p>MTDTVVNRWMYPGDGPLQ</p> <p>(Peptide available as ab4954)</p> <p> Run BLAST with  Run BLAST with</p>
阳性对照	WB: Rat Brain ; Mouse Brain ICC/IF: RSC96
常规说明	<p>The Life Science industry has been in the grips of a reproducibility crisis for a number of years. Abcam is leading the way in addressing this with our range of recombinant monoclonal antibodies and knockout edited cell lines for gold-standard validation. Please check that this product meets your needs before purchasing.</p> <p>If you have any questions, special requirements or concerns, please send us an inquiry and/or contact our Support team ahead of purchase. Recommended alternatives for this product can be found below, along with publications, customer reviews and Q&As</p>

性能

形式	Liquid
存放说明	Shipped at 4°C. Store at +4°C short term (1-2 weeks). Upon delivery aliquot. Store at -20°C or -80°C. Avoid freeze / thaw cycle.
存储溶液	Constituents: 0.1% BSA, 99% PBS
纯度	Immunogen affinity purified
克隆	多克隆
同种型	IgG

应用

The Abpromise guarantee **Abpromise™**承诺保证使用ab3338于以下的经测试应用

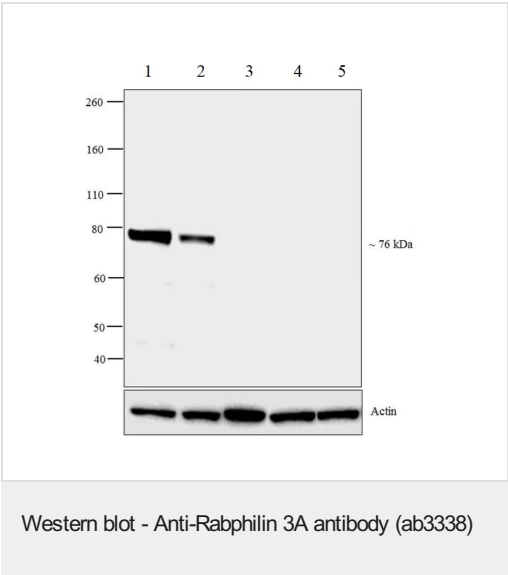
“应用说明”部分 下显示的仅为推荐的起始稀释度;实际最佳的稀释度/浓度应由使用者检定。

应用	Ab评论	说明
WB	★★★★☆ (1)	Use a concentration of 1 µg/ml. By Western blot, this antibody detects an ~75 kDa protein representing Rabphilin 3A from rat brain whole protein extract.
ICC/IF		Use a concentration of 2 µg/ml.

靶标

功能	Protein transport. Probably involved with Ras-related protein Rab-3A in synaptic vesicle traffic and/or synaptic vesicle fusion. Could play a role in neurotransmitter release by regulating membrane flow in the nerve terminal.
序列相似性	Contains 2 C2 domains. Contains 1 FYVE-type zinc finger. Contains 1 RabBD (Rab-binding) domain.
细胞定位	Cell junction > synapse.

图片



Western blot - Anti-Rabphilin 3A antibody (ab3338)

All lanes : Anti-Rabphilin 3A antibody (ab3338) at 3 µg/ml

- Lane 1 :** Mouse Brain
- Lane 2 :** Rat Brain
- Lane 3 :** Rat Lung
- Lane 4 :** Rat Liver
- Lane 5 :** Rat Kidney

Lysates/proteins at 30 µg per lane.

Secondary

All lanes : HRP conjugated Goat anti-Rabbit IgG at 1/4000 dilution

Additional bands at: ~76 kDa. We are unsure as to the identity of these extra bands.

Detection: chemiluminescence

Rabphilin 3A observed in Mouse and Rat Brain, and not observed

in other tissues which are documented to be Rabphilin 3A negative.

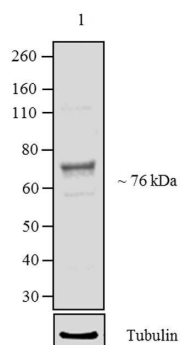
Anti-Rabphilin 3A antibody (ab3338) at 2 µg/ml + Rat Brain

Secondary

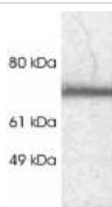
HRP conjugated Goat anti-Rabbit IgG at 1/2500 dilution

Additional bands at: ~76 kDa. We are unsure as to the identity of these extra bands.

Detection: chemiluminescence

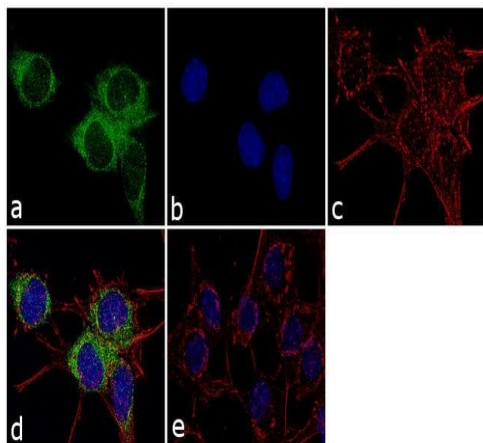


Western blot - Anti-Rabphilin 3A antibody (ab3338)



Western blot - Anti-Rabphilin 3A antibody (ab3338)

Western blot detection of Rabphilin 3A in rat brain extract using ab3338.



Immunocytochemistry/ Immunofluorescence - Anti-Rabphilin 3A antibody (ab3338)

Immunofluorescent analysis of 4% paraformaldehyde-fixed, 0.1% Triton™ X-100 permeabilized, 70% confluent log phase RSC96 (rat neuronal Schwann cell) cells, blocked with 3% BSA-PBS for 1 hour at room temperature. Labelling Rabphilin 3A with ab3338 at 2 µg/mL and incubated for 3 hours at room temperature then labelled with secondary antibody goat anti-rabbit igG, Alexa Fluor® 488 conjugate at a 1/2000 dilution for 45 minutes at room temperature (Green). Nuclei stained with DAPI (Blue). F-actin stained with Alexa Fluor® 555 Rhodamine Phalloidin at a dilution of 1/300 (Red). Panel e shows the no primary antibody control. The images were captured at 60X magnification.

Please note: All products are "FOR RESEARCH USE ONLY. NOT FOR USE IN DIAGNOSTIC PROCEDURES"

Our Abpromise to you: Quality guaranteed and expert technical support

- Replacement or refund for products not performing as stated on the datasheet
- Valid for 12 months from date of delivery
- Response to your inquiry within 24 hours
- We provide support in Chinese, English, French, German, Japanese and Spanish
- Extensive multi-media technical resources to help you
- We investigate all quality concerns to ensure our products perform to the highest standards

If the product does not perform as described on this datasheet, we will offer a refund or replacement. For full details of the Abpromise, please visit <https://www.abcam.cn/abpromise> or contact our technical team.

Terms and conditions

- Guarantee only valid for products bought direct from Abcam or one of our authorized distributors