


# Anti-Rab5 antibody - Early Endosome Marker ab18211

★★★★★ [26 Abreviews](#) [103 References](#) [4 图像](#)

### 概述

<b>产品名称</b>	Anti-Rab5抗体- Early Endosome Marker
<b>描述</b>	兔多克隆抗体to Rab5 - Early Endosome Marker
<b>宿主</b>	Rabbit
<b>特异性</b>	<p>The immunogen used for this product shares 43% homology with Rab5C. Cross-reactivity with this protein has not been confirmed experimentally.</p> <p>Replenishment batches of our polyclonal antibody, ab18211 are tested in WB. Previous batches were additionally validated in ICC. This application is still expected to work and is covered by our Abpromise guarantee. You may also be interested in our alternative recombinant antibody, <a href="#">ab218624</a>.</p>
<b>经测试应用</b>	<b>适用于:</b> WB, ICC
<b>种属反应性</b>	<p><b>与反应:</b> Mouse, Rat, Human</p> <p><b>预测可用于:</b> Dog, Chinese hamster </p>
<b>免疫原</b>	<p>Synthetic peptide corresponding to Human Rab5 aa 150 to the C-terminus (internal sequence) conjugated to keyhole limpet haemocyanin.</p> <p>(Peptide available as <a href="#">ab18625</a>)</p>
<b>阳性对照</b>	ICC: HeLa cells
<b>常规说明</b>	<p>The Life Science industry has been in the grips of a reproducibility crisis for a number of years. Abcam is leading the way in addressing this with our range of recombinant monoclonal antibodies and knockout edited cell lines for gold-standard validation. Please check that this product meets your needs before purchasing.</p> <p>If you have any questions, special requirements or concerns, please send us an inquiry and/or contact our Support team ahead of purchase. Recommended alternatives for this product can be found below, along with publications, customer reviews and Q&amp;As</p>

### 性能

<b>形式</b>	Liquid
<b>存放说明</b>	Shipped at 4°C. Store at +4°C short term (1-2 weeks). Upon delivery aliquot. Store at -20°C or -80°C. Avoid freeze / thaw cycle.
<b>存储溶液</b>	<p>pH: 7.40</p> <p>Preservative: 0.02% Sodium azide</p>

Constituent: PBS

Batches of this product that have a concentration < 1mg/ml may have BSA added as a stabilising agent. If you would like information about the formulation of a specific lot, please contact our scientific support team who will be happy to help.

纯度 Immunogen affinity purified  
克隆 多克隆  
同种型 IgG

## 应用

**The Abpromise guarantee** **Abpromise™**承诺保证使用ab18211于以下的经测试应用

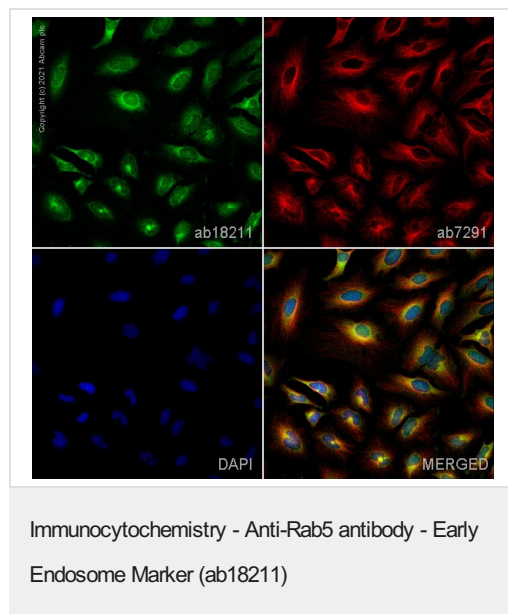
“应用说明”部分 下显示的仅为推荐的起始稀释度;实际最佳的稀释度/浓度应由使用者检定。

应用	Ab评论	说明
WB	★★★★☆ (15)	Use a concentration of 1 µg/ml. Detects a band of approximately 24 kDa (predicted molecular weight: 24 kDa).
ICC		Use a concentration of 1 µg/ml.

## 靶标

功能 Required for the fusion of plasma membranes and early endosomes.  
序列相似性 Belongs to the small GTPase superfamily. Rab family.  
细胞定位 Cell membrane. Early endosome membrane. Melanosome. Enriched in stage I melanosomes.

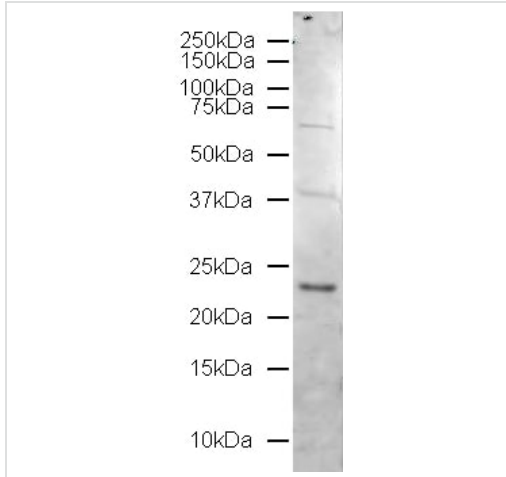
## 图片



ab18211 staining Rab5 in HeLa cells. The cells were fixed with 4% paraformaldehyde (10 min), permeabilized with 0.1% PBS-Tween for 5 minutes and then blocked with 1% BSA/10% normal goat serum/0.3M glycine in 0.1%PBS-Tween for 1h. The cells were then incubated overnight at 4°C with ab18211 at 1µg/ml and **ab7291**, Mouse monoclonal [DM1A] to alpha Tubulin - Loading Control. Cells were then incubated with **ab150081**, Goat polyclonal Secondary Antibody to Rabbit IgG - H&L (Alexa Fluor® 488), pre-adsorbed at 1/1000 dilution (shown in green) and **ab150120**, Goat polyclonal Secondary Antibody to Mouse IgG - H&L (Alexa Fluor® 594), pre-adsorbed at 1/1000 dilution (shown in pseudocolour red). Nuclear DNA was labelled with DAPI (shown in blue).

Image was acquired with a high-content analyser (Operetta CLS, Perkin Elmer) and a maximum intensity projection of confocal

sections is shown.



Western blot - Anti-Rab5 antibody - Early Endosome Marker (ab18211)

Anti-Rab5 antibody - Early Endosome Marker (ab18211) at 1 µg/ml  
+ Jurkat cell lysate at 20 µg

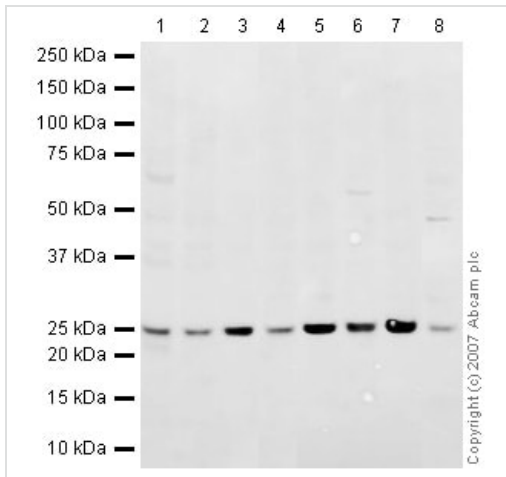
### Secondary

Alexa Fluor Goat polyclonal to Rabbit IgG (700) at 1/5000 dilution

**Predicted band size:** 24 kDa

**Observed band size:** 24 kDa

**Additional bands at:** 40 kDa, 70 kDa. We are unsure as to the identity of these extra bands.



Western blot - Anti-Rab5 antibody - Early Endosome Marker (ab18211)

**All lanes :** Anti-Rab5 antibody - Early Endosome Marker (ab18211) at 1 µg/ml

**Lane 1 :** NIH/3T3 whole cell lysate ([ab7179](#))

**Lane 2 :** MEF1 (Mouse embryonic fibroblast cell line) Whole Cell Lysate ([ab46770](#))

**Lane 3 :** Brain (Mouse) Tissue Lysate ([ab27253](#))

**Lane 4 :** Testis (Mouse) Tissue Lysate - normal tissue

**Lane 5 :** Spinal Cord (Mouse) Tissue Lysate

**Lane 6 :** PC12 (Rat adrenal pheochromocytoma cell line) Whole Cell Lysate

**Lane 7 :** Brain (Rat) Tissue Lysate - normal tissue

**Lane 8 :** Heart (Rat) Tissue Lysate

Lysates/proteins at 10 µg per lane.

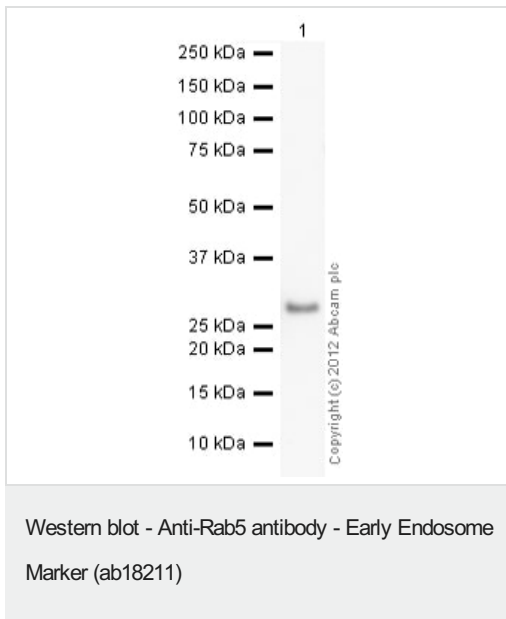
### Secondary

**All lanes :** IRDye 680 Conjugated Goat Anti-Rabbit IgG (H+L) at 1/10000 dilution

Performed under reducing conditions.

**Predicted band size:** 24 kDa

**Observed band size:** 25 kDa



Anti-Rab5 antibody - Early Endosome Marker (ab18211) at 1 µg/ml  
 + Recombinant Human Rab5A protein ([ab62956](#)) at 0.001 µg

**Secondary**

Goat Anti-Rabbit IgG H&L (HRP) preadsorbed ([ab97080](#)) at 1/5000 dilution

Developed using the ECL technique.

Performed under reducing conditions.

**Predicted band size:** 24 kDa

**Exposure time:** 150 seconds

**Please note:** All products are "FOR RESEARCH USE ONLY. NOT FOR USE IN DIAGNOSTIC PROCEDURES"

**Our Abpromise to you: Quality guaranteed and expert technical support**

- Replacement or refund for products not performing as stated on the datasheet
- Valid for 12 months from date of delivery
- Response to your inquiry within 24 hours
- We provide support in Chinese, English, French, German, Japanese and Spanish
- Extensive multi-media technical resources to help you
- We investigate all quality concerns to ensure our products perform to the highest standards

If the product does not perform as described on this datasheet, we will offer a refund or replacement. For full details of the Abpromise, please visit <https://www.abcam.cn/abpromise> or contact our technical team.

**Terms and conditions**

- Guarantee only valid for products bought direct from Abcam or one of our authorized distributors