

Anti-Rab5 antibody - Drosophila Early Endosome Marker ab31261

★★★★★ [7 Abreviews](#) [62 References](#) [1 图像](#)

概述

产品名称	Anti-Rab5抗体- Drosophila Early Endosome Marker
描述	兔多克隆抗体to Rab5 - Drosophila Early Endosome Marker
宿主	Rabbit
经测试应用	适用于: WB
种属反应性	与反应: Drosophila melanogaster
免疫原	Synthetic peptide conjugated to KLH derived from within residues 200 to the C-terminus of Fruit fly (Drosophila melanogaster) Rab5. 参阅Abcam的 专有抗源政策 (Peptide available as ab32489 .)
常规说明	<p>The Life Science industry has been in the grips of a reproducibility crisis for a number of years. Abcam is leading the way in addressing this with our range of recombinant monoclonal antibodies and knockout edited cell lines for gold-standard validation. Please check that this product meets your needs before purchasing.</p> <p>If you have any questions, special requirements or concerns, please send us an inquiry and/or contact our Support team ahead of purchase. Recommended alternatives for this product can be found below, along with publications, customer reviews and Q&As</p>

性能

形式	Liquid
存放说明	Shipped at 4°C. Store at +4°C short term (1-2 weeks). Upon delivery aliquot. Store at -20°C or -80°C. Avoid freeze / thaw cycle.
存储溶液	<p>pH: 7.40</p> <p>Preservative: 0.02% Sodium azide</p> <p>Constituent: PBS</p> <p>Batches of this product that have a concentration < 1mg/ml may have BSA added as a stabilising agent. If you would like information about the formulation of a specific lot, please contact our scientific support team who will be happy to help.</p>
纯度	Immunogen affinity purified
克隆	多克隆
同种型	IgG

应用

The Abpromise guarantee **Abpromise™**承诺保证使用ab31261于以下的经测试应用

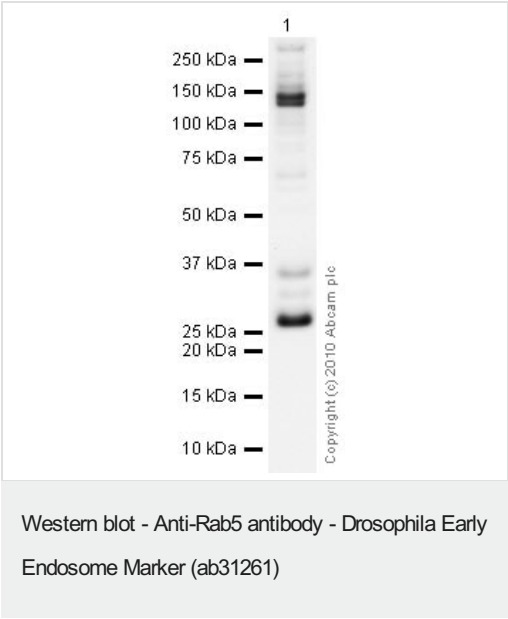
“应用说明”部分 下显示的仅为推荐的起始稀释度;实际最佳的稀释度/浓度应由使用者检定。

应用	Ab评论	说明
WB	★★★★★ (2)	Use a concentration of 1 µg/ml. Detects a band of approximately 26 kDa (predicted molecular weight: 26 kDa).

靶标

功能	Required for the fusion of plasma membranes and early endosomes.
序列相似性	Belongs to the small GTPase superfamily. Rab family.
细胞定位	Cell membrane. Early endosome membrane. Melanosome. Enriched in stage I melanosomes.

图片



Anti-Rab5 antibody - Drosophila Early Endosome Marker
(ab31261) at 1 µg/ml + Schneider L2 whole cell lysate (**ab14893**) at 10 µg

Secondary
Goat polyclonal to Rabbit IgG - H&L - Pre-Adsorbed (HRP) at 1/3000 dilution

Performed under reducing conditions.

Predicted band size: 26 kDa
Observed band size: 26 kDa
Additional bands at: 135 kDa, 145 kDa. We are unsure as to the identity of these extra bands.

Exposure time: 2 minutes

ab31261 detects a strong 26 kDa band in Drosophila lysate consistent with expected molecular weight of Rab5. In some batches of this antibody, we have observed additional bands at ~135, 145 and 70 kDa, the identity of which are unknown.

Please note: All products are "FOR RESEARCH USE ONLY. NOT FOR USE IN DIAGNOSTIC PROCEDURES"

Our Abpromise to you: Quality guaranteed and expert technical support

- Replacement or refund for products not performing as stated on the datasheet
- Valid for 12 months from date of delivery
- Response to your inquiry within 24 hours

- We provide support in Chinese, English, French, German, Japanese and Spanish
- Extensive multi-media technical resources to help you
- We investigate all quality concerns to ensure our products perform to the highest standards

If the product does not perform as described on this datasheet, we will offer a refund or replacement. For full details of the Abpromise, please visit <https://www.abcam.cn/abpromise> or contact our technical team.

Terms and conditions

- Guarantee only valid for products bought direct from Abcam or one of our authorized distributors