

Anti-RAB43 antibody [5G4] ab58030

4 References **2 图像**

概述

产品名称	Anti-RAB43抗体[5G4]
描述	小鼠单克隆抗体[5G4] to RAB43
宿主	Mouse
经测试应用	适用于: WB, IHC-P
种属反应性	与反应: Human
免疫原	Recombinant fragment corresponding to Human RAB43 aa 113-211. Sequence: IEDVRKYAGSNIVQLLIGNKSDLSELREVSLAEASLAHYD ILCAIETS AKDSSNVEEAFLRVATELIMRHGGPLFSEKSPDHIQLNSKDI GEGWGC

 [Run BLAST with](#)

 [Run BLAST with](#)

常规说明

This product was changed from ascites to tissue culture supernatant on 11th June 2019. Please note that the dilutions may need to be adjusted accordingly. If you have any questions, please do not hesitate to contact our scientific support team.

The Life Science industry has been in the grips of a reproducibility crisis for a number of years. Abcam is leading the way in addressing this with our range of recombinant monoclonal antibodies and knockout edited cell lines for gold-standard validation. Please check that this product meets your needs before purchasing.

If you have any questions, special requirements or concerns, please send us an inquiry and/or contact our Support team ahead of purchase. Recommended alternatives for this product can be found below, along with publications, customer reviews and Q&As

性能

形式	Liquid
存放说明	Shipped at 4°C. Upon delivery aliquot and store at -20°C or -80°C. Avoid repeated freeze / thaw cycles.
存储溶液	pH: 7.4
纯度	Tissue culture supernatant
克隆	单克隆

克隆编号	5G4
同种型	IgG2a
轻链类型	kappa

应用

The Abpromise guarantee **Abpromise™**承诺保证使用ab58030于以下的经测试应用

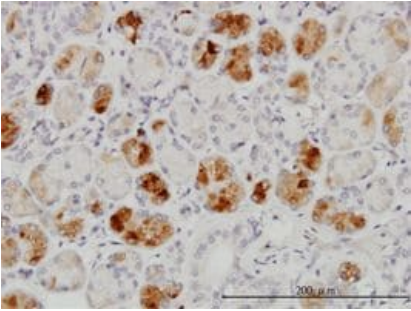
“应用说明”部分 下显示的仅为推荐的起始稀释度;实际最佳的稀释度/浓度应由使用者检定。

应用	Ab评论	说明
WB		Use at an assay dependent concentration. Predicted molecular weight: 23 kDa.
IHC-P		Use at an assay dependent concentration.

靶标

组织特异性	Widely expressed in brain, testis, lung, heart, ovary, colon, kidney, uterus and spleen but not in liver.
序列相似性	Belongs to the small GTPase superfamily. Rab family.
细胞定位	Cell membrane.

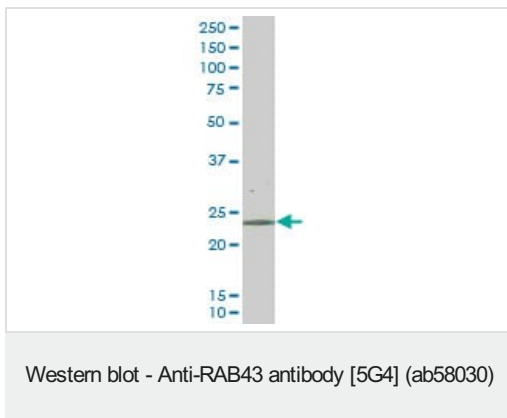
图片



Immunohistochemistry (Formalin/PFA-fixed paraffin-embedded sections) - Anti-RAB43 antibody [5G4] (ab58030)

RAB43 antibody (ab58030) used in immunohistochemistry at 3ug/ml on formalin fixed and paraffin embedded human salivary gland.

This image was generated using the ascites version of the product.



RAB43 antibody (ab58030) at 1ug/lane + HepG2 cell lysate at 25ug/lane.

This image was generated using the ascites version of the product.

Please note: All products are "FOR RESEARCH USE ONLY. NOT FOR USE IN DIAGNOSTIC PROCEDURES"

Our Abpromise to you: Quality guaranteed and expert technical support

- Replacement or refund for products not performing as stated on the datasheet
- Valid for 12 months from date of delivery
- Response to your inquiry within 24 hours
- We provide support in Chinese, English, French, German, Japanese and Spanish
- Extensive multi-media technical resources to help you
- We investigate all quality concerns to ensure our products perform to the highest standards

If the product does not perform as described on this datasheet, we will offer a refund or replacement. For full details of the Abpromise, please visit <https://www.abcam.cn/abpromise> or contact our technical team.

Terms and conditions

- Guarantee only valid for products bought direct from Abcam or one of our authorized distributors