


Anti-RAB3GAP2 antibody ab110462

2 图像

概述

产品名称	Anti-RAB3GAP2抗体
描述	兔多克隆抗体to RAB3GAP2
宿主	Rabbit
经测试应用	适用于: WB, IHC-P
种属反应性	与反应: Human, African green monkey 预测可用于: Mouse, Rat 
免疫原	Synthetic peptide derived from an internal region of Human RAB3GAP2 (UniProt ID: Q9H2M9).
阳性对照	Human breast carcinoma tissue; extracts from COS cells
常规说明	<p>The Life Science industry has been in the grips of a reproducibility crisis for a number of years. Abcam is leading the way in addressing this with our range of recombinant monoclonal antibodies and knockout edited cell lines for gold-standard validation. Please check that this product meets your needs before purchasing.</p> <p>If you have any questions, special requirements or concerns, please send us an inquiry and/or contact our Support team ahead of purchase. Recommended alternatives for this product can be found below, along with publications, customer reviews and Q&As</p>

性能

形式	Liquid
存放说明	Shipped at 4°C. Store at -20°C. Stable for 12 months at -20°C.
存储溶液	pH: 7.40 Preservative: 0.02% Sodium azide Constituents: PBS, 0.88% Sodium chloride, 50% Glycerol (glycerin, glycerine)
纯度	Immunogen affinity purified
纯化说明	ab110462 was affinity purified from rabbit antiserum by affinity chromatography using epitope specific immunogen.
克隆	多克隆
同种型	IgG

The Abpromise guarantee

Abpromise™承诺保证使用ab110462于以下的经测试应用

“应用说明”部分 下显示的仅为推荐的起始稀释度;实际最佳的稀释度/浓度应由使用者检定。

应用	Ab评论	说明
WB		1/500 - 1/1000. Detects a band of approximately 155 kDa (predicted molecular weight: 156 kDa).
IHC-P		1/50 - 1/100. Antigen retrieval is heat-mediated, citrate buffer pH 6.0. A pressure cooker was used for about 5 minutes.

靶标

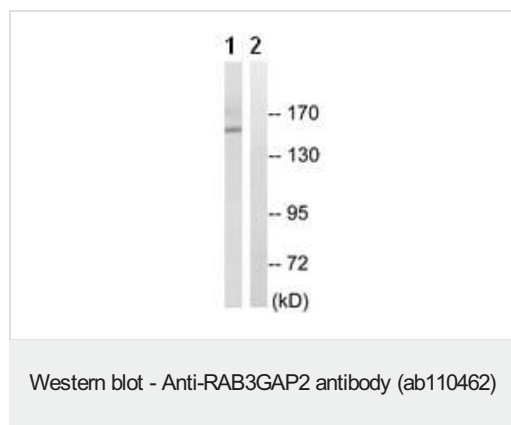
相关性

RAB3GAP2 is a regulatory subunit of a GTPase activating protein that has specificity for Rab3 subfamily (RAB3A, RAB3B, RAB3C and RAB3D). Rab3 proteins are involved in regulated exocytosis of neurotransmitters and hormones. Rab3 GTPase-activating complex specifically converts active Rab3-GTP to the inactive form Rab3-GDP. It is required for normal eye and brain development and may participate in neurodevelopmental processes such as proliferation, migration and differentiation before synapse formation, and non-synaptic vesicular release of neurotransmitters.

细胞定位

Cytoplasmic. Note: In neurons, it is enriched in the synaptic soluble fraction.

图片



All lanes : Anti-RAB3GAP2 antibody (ab110462) at 1/500 dilution

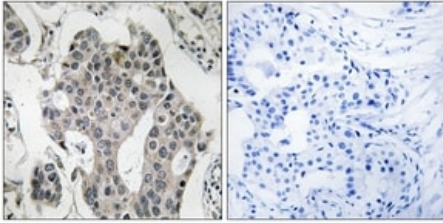
Lane 1 : Extracts from COS cells

Lane 2 : Extracts from COS cells, treated with the synthesized peptide

Lysates/proteins at 30 µg per lane.

Predicted band size: 156 kDa

Observed band size: 155 kDa



Immunohistochemistry (Formalin/PFA-fixed paraffin-embedded sections) - Anti-RAB3GAP2 antibody (ab110462)

ab110462, at a 1/50 dilution, staining RAB3GAP2 in paraffin embedded Human breast carcinoma tissue by Immunohistochemistry, in the absence (left image) or presence (right image) of the synthesized peptide.

Please note: All products are "FOR RESEARCH USE ONLY. NOT FOR USE IN DIAGNOSTIC PROCEDURES"

Our Abpromise to you: Quality guaranteed and expert technical support

- Replacement or refund for products not performing as stated on the datasheet
- Valid for 12 months from date of delivery
- Response to your inquiry within 24 hours
- We provide support in Chinese, English, French, German, Japanese and Spanish
- Extensive multi-media technical resources to help you
- We investigate all quality concerns to ensure our products perform to the highest standards

If the product does not perform as described on this datasheet, we will offer a refund or replacement. For full details of the Abpromise, please visit <https://www.abcam.cn/abpromise> or contact our technical team.

Terms and conditions

- Guarantee only valid for products bought direct from Abcam or one of our authorized distributors