


### Anti-RAB21 antibody ab79713

★☆☆☆☆ [1 Abreviews](#) [1 图像](#)

#### 概述

产品名称	Anti-RAB21抗体
描述	兔多克隆抗体to RAB21
宿主	Rabbit
经测试应用	适用于: WB
种属反应性	与反应: Human 预测可用于: Mouse, Rat, Sheep, Cow, Dog 
免疫原	Synthetic peptide corresponding to Human RAB21 aa 1-100 conjugated to keyhole limpet haemocyanin. (Peptide available as <a href="#">ab89375</a> )
阳性对照	This antibody gave a positive signal in Human liver tissue lysate and in the following whole cell lysates: HepG2; HeLa; A431; Jurkat.
常规说明	<p>The Life Science industry has been in the grips of a reproducibility crisis for a number of years. Abcam is leading the way in addressing this with our range of recombinant monoclonal antibodies and knockout edited cell lines for gold-standard validation. Please check that this product meets your needs before purchasing.</p> <p>If you have any questions, special requirements or concerns, please send us an inquiry and/or contact our Support team ahead of purchase. Recommended alternatives for this product can be found below, along with publications, customer reviews and Q&amp;As</p>

#### 性能

形式	Liquid
存放说明	Shipped at 4°C. Store at +4°C short term (1-2 weeks). Upon delivery aliquot. Store at -20°C or -80°C. Avoid freeze / thaw cycle.
存储溶液	pH: 7.40 Preservative: 0.02% Sodium azide Constituent: PBS

Batches of this product that have a concentration < 1mg/ml may have BSA added as a stabilising agent. If you would like information about the formulation of a specific lot, please contact our scientific support team who will be happy to help.

纯度	Immunogen affinity purified
克隆	多克隆
同种型	IgG

## 应用

**The Abpromise guarantee** **Abpromise™**承诺保证使用ab79713于以下的经测试应用

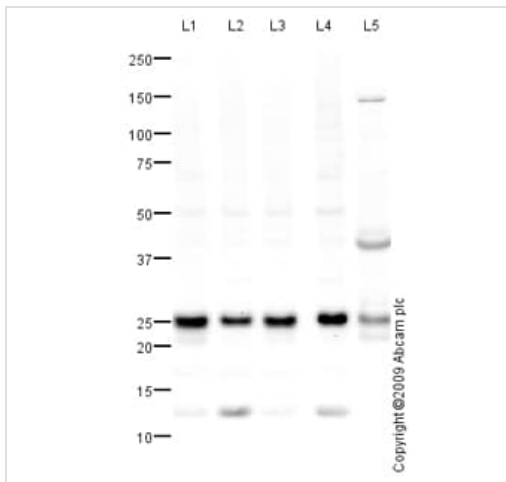
“应用说明”部分下显示的仅为推荐的起始稀释度;实际最佳的稀释度/浓度应由使用者检定。

应用	Ab评论	说明
WB	★☆☆☆☆ (1)	Use a concentration of 1 µg/ml. Detects a band of approximately 25 kDa (predicted molecular weight: 24 kDa).

## 靶标

功能	Regulates integrin internalization and recycling, but does not influence the traffic of endosomally translocated receptors in general. As a result, may regulate cell adhesion and migration (By similarity). During the mitosis of adherent cells, controls the endosomal trafficking of integrins which is required for the successful completion of cytokinesis.
组织特异性	Widely expressed. In jejunal tissue, predominantly expressed in the apical region of the epithelial cell layer of the villi, weak expression, if any, in the crypt epithelium. Capillary endothelium and some cell types in the lamina propria also show expression.
序列相似性	Belongs to the small GTPase superfamily. Rab family.
细胞定位	Endoplasmic reticulum membrane. Golgi apparatus membrane. Early endosome membrane. Cytoplasmic vesicle membrane. Cleavage furrow. In nonpolarized epithelial Caco-2 cells, found in the endoplasmic reticulum; in polarized cells, observed in vesicles in the apical cytoplasm. During mitosis, in mid-telophase, localized in the ingressing cleavage furrow. In late telophase, detected at the opposite poles of the daughter cells, in vesicles at the base of lamellipodia formed by the separating daughter cells.

## 图片



Western blot - Anti-RAB21 antibody (ab79713)

**All lanes** : Anti-RAB21 antibody (ab79713) at 1 µg/ml

**Lane 1** : HepG2 (Human hepatocellular liver carcinoma cell line)

Whole Cell Lysate

**Lane 2** : HeLa (Human epithelial carcinoma cell line) Whole Cell

Lysate

**Lane 3** : A431 (Human epithelial carcinoma cell line) Whole Cell

Lysate

**Lane 4** : Jurkat (Human T cell lymphoblast-like cell line) Whole Cell

Lysate

**Lane 5** : Human liver tissue lysate - total protein ([ab29889](#))

Lysates/proteins at 10 µg per lane.

### Secondary

**All lanes** : Goat polyclonal to Rabbit IgG - H&L - Pre-Adsorbed (HRP) at 1/3000 dilution

Developed using the ECL technique.

Performed under reducing conditions.

**Predicted band size:** 24 kDa

**Observed band size:** 25 kDa

**Additional bands at:** 12.5 kDa, 146 kDa, 38 kDa. We are unsure as to the identity of these extra bands.

**Exposure time:** 4 minutes

**Please note:** All products are "FOR RESEARCH USE ONLY. NOT FOR USE IN DIAGNOSTIC PROCEDURES"

### Our Abpromise to you: Quality guaranteed and expert technical support

- Replacement or refund for products not performing as stated on the datasheet
- Valid for 12 months from date of delivery
- Response to your inquiry within 24 hours
- We provide support in Chinese, English, French, German, Japanese and Spanish
- Extensive multi-media technical resources to help you
- We investigate all quality concerns to ensure our products perform to the highest standards

If the product does not perform as described on this datasheet, we will offer a refund or replacement. For full details of the Abpromise, please visit <https://www.abcam.cn/abpromise> or contact our technical team.

## Terms and conditions

---

- Guarantee only valid for products bought direct from Abcam or one of our authorized distributors