


Anti-Rab11A antibody ab65200

★★★★★ [5 Abreviews](#) [25 References](#) [1 图像](#)

概述

产品名称	Anti-Rab11A抗体
描述	兔多克隆抗体to Rab11A
宿主	Rabbit
经测试应用	适用于: WB 不适用于: ICC/IF
种属反应性	与反应: Human 预测可用于: Mouse, Sheep, Chicken, Cow, Rhesus monkey 
免疫原	Synthetic peptide conjugated to KLH derived from within residues 150 to the C-terminus of Human Rab11.参阅Abcam的专有抗源政策(Peptide available as ab66706 .)
阳性对照	Recombinant Human Rab11A protein (ab117177) can be used as a positive control in WB. This antibody gave a positive signal in the following Human Whole Cell Lysates: HeLa, Jurkat, MCF7, SHSY-5Y
常规说明	<p>The Life Science industry has been in the grips of a reproducibility crisis for a number of years. Abcam is leading the way in addressing this with our range of recombinant monoclonal antibodies and knockout edited cell lines for gold-standard validation. Please check that this product meets your needs before purchasing.</p> <p>If you have any questions, special requirements or concerns, please send us an inquiry and/or contact our Support team ahead of purchase. Recommended alternatives for this product can be found below, along with publications, customer reviews and Q&As</p>

性能

形式	Liquid
存放说明	Shipped at 4°C. Store at +4°C short term (1-2 weeks). Upon delivery aliquot. Store at -20°C or -80°C. Avoid freeze / thaw cycle.
存储溶液	pH: 7.40 Preservative: 0.02% Sodium azide Constituent: PBS
	Batches of this product that have a concentration < 1mg/ml may have BSA added as a stabilising agent. If you would like information about the formulation of a specific lot, please contact our scientific support team who will be happy to help.

纯度	Immunogen affinity purified
克隆	多克隆
同种型	IgG

应用

The Abpromise guarantee **Abpromise™承诺保证使用ab65200于以下的经测试应用**

“应用说明”部分 下显示的仅为推荐的起始稀释度;实际最佳的稀释度/浓度应由使用者检定。

应用	Ab评论	说明
WB	★★★★☆ (3)	Use a concentration of 1 µg/ml. Detects a band of approximately 24 kDa (predicted molecular weight: 24 kDa).

应用说明 Is unsuitable for ICC/IF.

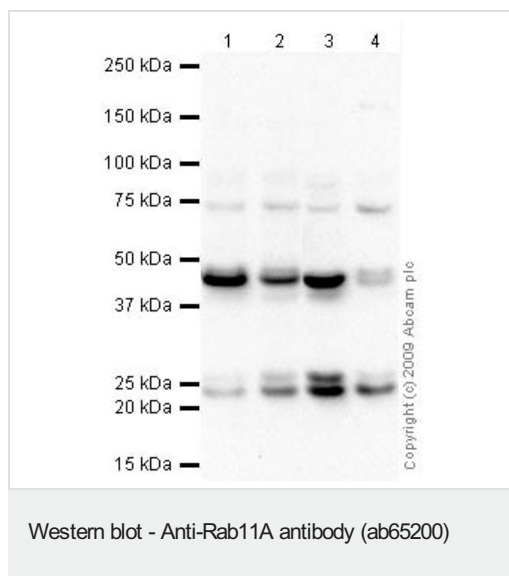
靶标

功能 Regulates endocytic recycling. May exert its functions by interacting with multiple effector proteins in different complexes. Acts as a major regulator of membrane delivery during cytokinesis. Together with MYO5B and RAB8A participates in epithelial cell polarization. Together with RAB3IP, RAB8A, the exocyst complex, PARD3, PRKCI, ANXA2, CDC42 and DNMBP promotes transcytosis of PODXL to the apical membrane initiation sites (AMIS), apical surface formation and lumenogenesis (By similarity). Together with MYO5B participates in CFTR trafficking to the plasma membrane and TF (Transferrin) recycling in nonpolarized cells. Required in a complex with MYO5B and RAB11FIP2 for the transport of NPC1L1 to the plasma membrane. Participates in the sorting and basolateral transport of CDH1 from the Golgi apparatus to the plasma membrane. Regulates the recycling of FCGRT (receptor of Fc region of monomeric Ig G) to basolateral membranes.

序列相似性 Belongs to the small GTPase superfamily. Rab family.

细胞定位	Cell membrane. Recycling endosome membrane. Cleavage furrow. Translocates with RAB11FIP2 from the vesicles of the endocytic recycling compartment (ERC) to the plasma membrane. Localizes to the cleavage furrow. Colocalizes with PARD3, PRKCI, EXOC5, OCLN, PODXL and RAB8A in apical membrane initiation sites (AMIS) during the generation of apical surface and luminogenesis.
-------------	---

图片



All lanes : Anti-Rab11A antibody (ab65200) at 1 µg/ml

Lane 1 : HeLa (Human epithelial carcinoma cell line) Whole Cell Lysate

Lane 2 : Jurkat (Human T cell lymphoblast-like cell line) Whole Cell Lysate

Lane 3 : MCF7 (Human breast adenocarcinoma cell line) Whole Cell Lysate

Lane 4 : SHSY-5Y (Human neuroblastoma cell line) Whole Cell Lysate

Lysates/proteins at 10 µg per lane.

Secondary

All lanes : Goat polyclonal to Rabbit IgG - H&L - Pre-Adsorbed (HRP) at 1/3000 dilution

Performed under reducing conditions.

Predicted band size: 24 kDa

Observed band size: 24 kDa

Additional bands at: 26 kDa (possible post-translational modification), 45 kDa, 72 kDa. We are unsure as to the identity of these extra bands.

We believe that the additional bands observed at 45 and 72 kDa may be a result of disulphide-linked forms of the Rab11 protein

Please note: All products are "FOR RESEARCH USE ONLY. NOT FOR USE IN DIAGNOSTIC PROCEDURES"

Our Abpromise to you: Quality guaranteed and expert technical support

- Replacement or refund for products not performing as stated on the datasheet
- Valid for 12 months from date of delivery

- Response to your inquiry within 24 hours
- We provide support in Chinese, English, French, German, Japanese and Spanish
- Extensive multi-media technical resources to help you
- We investigate all quality concerns to ensure our products perform to the highest standards

If the product does not perform as described on this datasheet, we will offer a refund or replacement. For full details of the Abpromise, please visit <https://www.abcam.cn/abpromise> or contact our technical team.

Terms and conditions

- Guarantee only valid for products bought direct from Abcam or one of our authorized distributors