

# Anti-QPRT antibody [EPR11941(B)] ab171944

敲除验证 重组 RabMAb

6 References 4 图像

### 概述

产品名称	Anti-QPRT抗体[EPR11941(B)]
描述	兔单克隆抗体[EPR11941(B)] to QPRT
宿主	Rabbit
经测试应用	适用于: Flow Cyt (Intra), WB 不适用于: ICC/IF, IHC or IP
种属反应性	与反应: Human 不与反应: Mouse, Rat
免疫原	Synthetic peptide within Human QPRT aa 250 to the C-terminus (C terminal) (Cysteine residue). The exact sequence is proprietary. Database link: <a href="#">Q15274</a>
阳性对照	Human fetal kidney, Human fetal liver and Human fetal brain lysate, HepG2 and HeLa cell line lysates, Jurkat cells.
常规说明	This product is a recombinant monoclonal antibody, which offers several advantages including: - High batch-to-batch consistency and reproducibility - Improved sensitivity and specificity - Long-term security of supply - Animal-free production For more information <a href="#">see here</a> . Our RabMAb <sup>®</sup> technology is a patented hybridoma-based technology for making rabbit monoclonal antibodies. For details on our patents, please refer to <a href="#">RabMAb<sup>®</sup> patents</a> .

### 性能

形式	Liquid
存放说明	Shipped at 4°C. Store at +4°C short term (1-2 weeks). Upon delivery aliquot. Store at -20°C long term. Avoid freeze / thaw cycle.
存储溶液	pH: 7.20 Preservative: 0.01% Sodium azide Constituents: 9% PBS, 40% Glycerol (glycerin, glycerine), 0.05% BSA, 50% Tissue culture supernatant

纯度	Tissue culture supernatant
克隆	单克隆
克隆编号	EPR11941(B)
同种型	IgG

## 应用

**The Abpromise guarantee** **Abpromise™**承诺保证使用ab171944于以下的经测试应用

“应用说明”部分 下显示的仅为推荐的起始稀释度;实际最佳的稀释度/浓度应由使用者检定。

应用	Ab评论	说明
<b>Flow Cyt (Intra)</b>		1/10 - 1/100. <b>ab172730</b> - Rabbit monoclonal IgG, is suitable for use as an isotype control with this antibody.
<b>WB</b>		1/1000 - 1/5000. Predicted molecular weight: 31 kDa.

**应用说明** Is unsuitable for ICC/IF, IHC or IP.

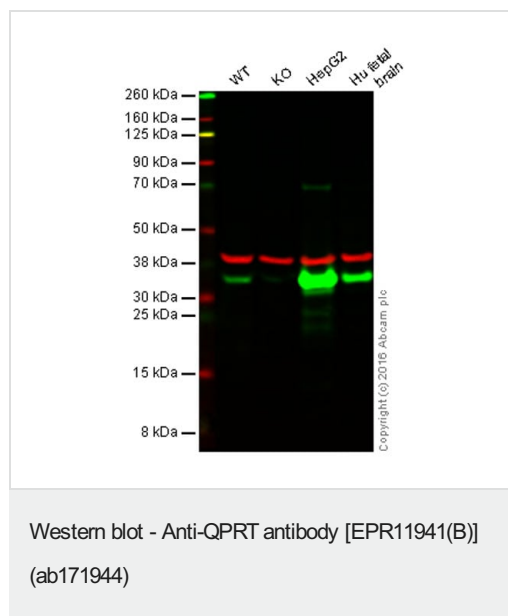
## 靶标

**功能** Involved in the catabolism of quinolinic acid (QA).

**通路** Cofactor biosynthesis; NAD(+) biosynthesis; nicotinate D-ribonucleotide from quinolinate: step 1/1.

**序列相似性** Belongs to the nadC/modD family.

## 图片



**Lane 1:** Wild-type HAP1 cell lysate (20 µg)

**Lane 2:** QPRT knockout HAP1 cell lysate (20 µg)

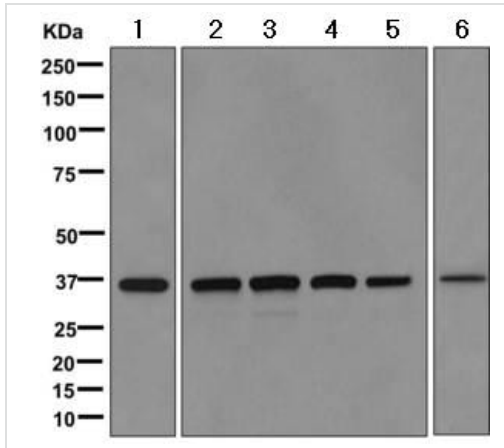
**Lane 3:** HepG2 cell lysate (20 µg)

**Lane 4:** Human fetal brain cell lysate (20 µg)

**Lanes 1 - 4:** Merged signal (red and green). Green - ab171944 observed at 35 kDa. Red - loading control, **ab8245**, observed at 37 kDa.

ab171944 was shown to specifically react with QPRT when QPRT knockout samples were used. Wild-type and QPRT knockout samples were subjected to SDS-PAGE. ab171944 and **ab8245** (loading control to GAPDH) were diluted 1/1000 and 1/10 000 respectively and incubated overnight at 4°C. Blots were developed with Goat anti-Rabbit IgG H&L (IRDye® 800CW) preadsorbed **ab216773** and Goat anti-Mouse IgG H&L (IRDye® 680RD) preadsorbed **ab216776** secondary antibodies at 1/10 000 dilution

for 1 h at room temperature before imaging.



Western blot - Anti-QPRT antibody [EPR11941(B)] (ab171944)

**All lanes** : Anti-QPRT antibody [EPR11941(B)] (ab171944) at 1/1000 dilution

**Lane 1** : Human fetal kidney tissue lysate

**Lane 2** : Human fetal liver tissue lysate

**Lane 3** : HepG2 cell lysate

**Lane 4** : HeLa cell lysate

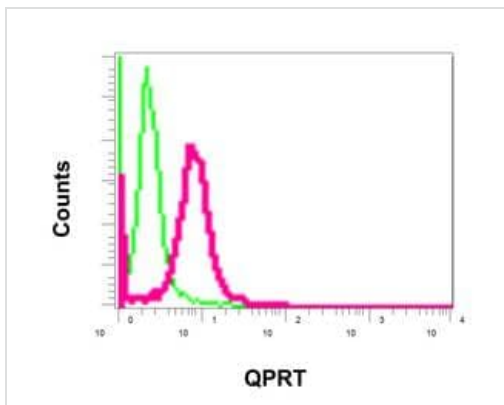
**Lane 5** : Jurkat cell lysate

**Lane 6** : Human fetal heart tissue lysate

Lysates/proteins at 10 µg per lane.

Developed using the ECL technique.

**Predicted band size:** 31 kDa



Flow Cytometry (Intracellular) - Anti-QPRT antibody [EPR11941(B)] (ab171944)

Intracellular flow cytometric analysis of permeabilized Jurkat cells labeling QPRT with ab171944 at 1/10 (red) or a rabbit IgG (negative) (green).

### Why choose a recombinant antibody?



**Research with confidence**  
Consistent and reproducible results



**Long-term and scalable supply**  
Recombinant technology



**Success from the first experiment**  
Confirmed specificity



**Ethical standards compliant**  
Animal-free production

Anti-QPRT antibody [EPR11941(B)] (ab171944)

**Please note:** All products are "FOR RESEARCH USE ONLY. NOT FOR USE IN DIAGNOSTIC PROCEDURES"

### Our Abpromise to you: Quality guaranteed and expert technical support

---

- Replacement or refund for products not performing as stated on the datasheet
- Valid for 12 months from date of delivery
- Response to your inquiry within 24 hours
- We provide support in Chinese, English, French, German, Japanese and Spanish
- Extensive multi-media technical resources to help you
- We investigate all quality concerns to ensure our products perform to the highest standards

If the product does not perform as described on this datasheet, we will offer a refund or replacement. For full details of the Abpromise, please visit <https://www.abcam.cn/abpromise> or contact our technical team.

### Terms and conditions

---

- Guarantee only valid for products bought direct from Abcam or one of our authorized distributors