

# Anti-PTP4A3/PRL-R antibody ab26947

[1 References](#) [1 图像](#)

### 概述

产品名称	Anti-PTP4A3/PRL-R抗体
描述	兔多克隆抗体to PTP4A3/PRL-R
宿主	Rabbit
经测试应用	适用于: WB
种属反应性	与反应: Recombinant fragment
免疫原	Recombinant full length protein corresponding to Human PTP4A3/PRL-R.
常规说明	<p>The Life Science industry has been in the grips of a reproducibility crisis for a number of years. Abcam is leading the way in addressing this with our range of recombinant monoclonal antibodies and knockout edited cell lines for gold-standard validation. Please check that this product meets your needs before purchasing.</p> <p>If you have any questions, special requirements or concerns, please send us an inquiry and/or contact our Support team ahead of purchase. Recommended alternatives for this product can be found below, along with publications, customer reviews and Q&amp;As</p>

### 性能

形式	Liquid
存放说明	Shipped at 4°C. Store at +4°C short term (1-2 weeks). Upon delivery aliquot. Store at -20°C long term.
存储溶液	Constituent: Whole serum
纯度	Whole antiserum
克隆	多克隆
同种型	IgG

### 应用

**The Abpromise guarantee** **Abpromise™**承诺保证使用ab26947于以下的经测试应用

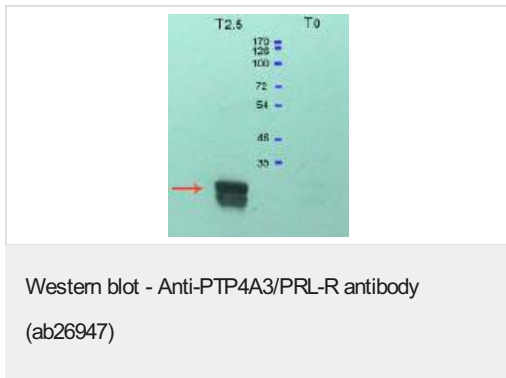
“应用说明”部分 下显示的仅为推荐的起始稀释度;实际最佳的稀释度/浓度应由使用者检定。

应用	Ab评论	说明
WB		1/5000. Predicted molecular weight: 19 kDa.

## 靶标

<b>功能</b>	Protein tyrosine phosphatase which stimulates progression from G1 into S phase during mitosis. Enhances cell proliferation, cell motility and invasive activity, and promotes cancer metastasis. May be involved in the progression of cardiac hypertrophy by inhibiting intracellular calcium mobilization in response to angiotensin II.
<b>组织特异性</b>	Mainly expressed in cardiomyocytes and skeletal muscle; also found in pancreas. Consistently overexpressed in colon cancer metastasis.
<b>序列相似性</b>	Belongs to the protein-tyrosine phosphatase family. Contains 1 tyrosine-protein phosphatase domain.
<b>翻译后修饰</b>	Farnesylated. Farnesylation is required for membrane targeting.
<b>细胞定位</b>	Cell membrane. Early endosome.

## 图片



**All lanes :** Anti-PTP4A3/PRL-R antibody (ab26947) at 1/5000 dilution

**Lane 1 :** (T2.5) IPTG induction of the recombinant protein expression for 2.5 hours.

**Lane 2 :** (T0) before IPTG induction of the protein expression

**Predicted band size:** 19 kDa

**Observed band size:** 23.9 kDa

**Please note:** All products are "FOR RESEARCH USE ONLY. NOT FOR USE IN DIAGNOSTIC PROCEDURES"

## Our Abpromise to you: Quality guaranteed and expert technical support

- Replacement or refund for products not performing as stated on the datasheet
- Valid for 12 months from date of delivery
- Response to your inquiry within 24 hours
- We provide support in Chinese, English, French, German, Japanese and Spanish
- Extensive multi-media technical resources to help you
- We investigate all quality concerns to ensure our products perform to the highest standards

If the product does not perform as described on this datasheet, we will offer a refund or replacement. For full details of the Abpromise,

please visit <https://www.abcam.cn/abpromise> or contact our technical team.

## **Terms and conditions**

---

- Guarantee only valid for products bought direct from Abcam or one of our authorized distributors