

Anti-PTP1B (phospho S352) antibody [EP1839Y] ab62330

RabMAb

1 图像

概述

产品名称	Anti-PTP1B (phospho S352)抗体[EP1839Y]
描述	兔单克隆抗体[EP1839Y] to PTP1B (phospho S352)
宿主	Rabbit
经测试应用	适用于: WB 不适用于: Flow Cyt
种属反应性	与反应: Human
免疫原	Synthetic peptide. This information is proprietary to Abcam and/or its suppliers.
阳性对照	WB: HeLa cell lysate.
常规说明	Our RabMAb [®] technology is a patented hybridoma-based technology for making rabbit monoclonal antibodies. For details on our patents, please refer to RabMAb[®] patents . The Life Science industry has been in the grips of a reproducibility crisis for a number of years. Abcam is leading the way in addressing this with our range of recombinant monoclonal antibodies and knockout edited cell lines for gold-standard validation. Please check that this product meets your needs before purchasing. If you have any questions, special requirements or concerns, please send us an inquiry and/or contact our Support team ahead of purchase. Recommended alternatives for this product can be found below, along with publications, customer reviews and Q&As Mouse, Rat: We have preliminary internal testing data to indicate this antibody may not react with these species. Please contact us for more information.

性能

形式	Liquid
存放说明	Shipped at 4°C. Upon delivery aliquot and store at -20°C. Avoid freeze / thaw cycles.
存储溶液	pH: 7.20 Preservative: 0.05% Sodium azide Constituents: 0.1% BSA, 40% Glycerol (glycerin, glycerine), 9.85% Tris glycine, 50% Tissue culture supernatant
纯度	Tissue culture supernatant

克隆	单克隆
克隆编号	EP1839Y
同种型	IgG

应用

The Abpromise guarantee **Abpromise™承诺保证使用ab62330于以下的经测试应用**

“应用说明”部分下显示的仅为推荐的起始稀释度;实际最佳的稀释度/浓度应由使用者检定。

应用	Ab评论	说明
WB		1/2500 - 1/5000. Detects a band of approximately 50 kDa (predicted molecular weight: 50 kDa).

应用说明 Is unsuitable for Flow Cyt.

靶标

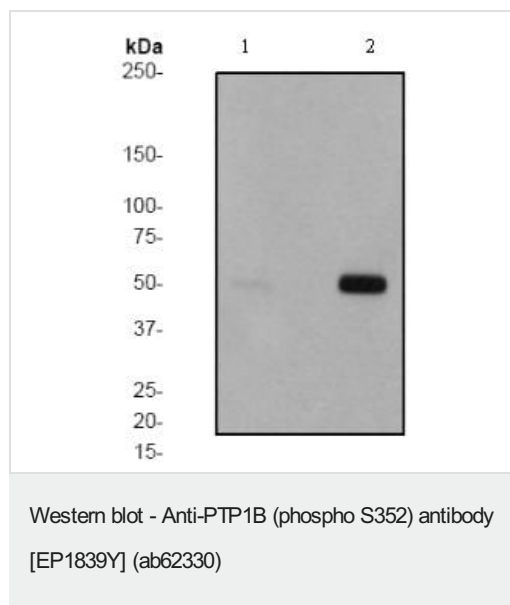
功能	May play an important role in CKII- and p60c-src-induced signal transduction cascades.
----	--

序列相似性	Belongs to the protein-tyrosine phosphatase family. Non-receptor class 1 subfamily. Contains 1 tyrosine-protein phosphatase domain.
-------	--

翻译后修饰 Oxidized on Cys-215; the Cys-SOH formed in response to redox signaling reacts with the alpha-amido of the following residue to form a 4-amino-3-isothiazolidinone serine cross-link, triggering a conformational change that inhibits substrate binding and activity. The active site can be restored by reduction.

细胞定位 Endoplasmic reticulum membrane.

图片



All lanes : Anti-PTP1B (phospho S352) antibody [EP1839Y] (ab62330) at 1/5000 dilution

Lane 1 : Hela cell lysates (untreated)

Lane 2 : Hela cell lysates (treated with Calyculin A)

Lysates/proteins at 10 µg per lane.

Secondary

All lanes : Goat anti-Rabbit HRP conjugated at 1/2000 dilution

Predicted band size: 50 kDa

Observed band size: 50 kDa

Please note: All products are "FOR RESEARCH USE ONLY. NOT FOR USE IN DIAGNOSTIC PROCEDURES"

Our Abpromise to you: Quality guaranteed and expert technical support

- Replacement or refund for products not performing as stated on the datasheet
- Valid for 12 months from date of delivery
- Response to your inquiry within 24 hours
- We provide support in Chinese, English, French, German, Japanese and Spanish
- Extensive multi-media technical resources to help you
- We investigate all quality concerns to ensure our products perform to the highest standards

If the product does not perform as described on this datasheet, we will offer a refund or replacement. For full details of the Abpromise, please visit <https://www.abcam.cn/abpromise> or contact our technical team.

Terms and conditions

- Guarantee only valid for products bought direct from Abcam or one of our authorized distributors