

Anti-PTF1A antibody ab125973

1 图像

概述

产品名称	Anti-PTF1A抗体
描述	兔多克隆抗体to PTF1A
宿主	Rabbit
经测试应用	适用于: WB
种属反应性	与反应: Mouse, Rat 预测可用于: Chinese hamster 
免疫原	Synthetic peptide corresponding to Mouse PTF1A aa 250 to the C-terminus conjugated to keyhole limpet haemocyanin. Database link: Q9QX98 (Peptide available as ab155818)
阳性对照	This antibody gave a positive signal in the following tissue lysates: Mouse Brain; Rat Brain; Mouse Cerebellum; Rat Cerebellum.
常规说明	<p>The Life Science industry has been in the grips of a reproducibility crisis for a number of years. Abcam is leading the way in addressing this with our range of recombinant monoclonal antibodies and knockout edited cell lines for gold-standard validation. Please check that this product meets your needs before purchasing.</p> <p>If you have any questions, special requirements or concerns, please send us an inquiry and/or contact our Support team ahead of purchase. Recommended alternatives for this product can be found below, along with publications, customer reviews and Q&As</p>

性能

形式	Liquid
存放说明	Shipped at 4°C. Store at +4°C short term (1-2 weeks). Upon delivery aliquot. Store at -20°C or -80°C. Avoid freeze / thaw cycle.
存储溶液	pH: 7.40 Preservative: 0.02% Sodium azide Constituent: PBS
	Batches of this product that have a concentration < 1mg/ml may have BSA added as a stabilising agent. If you would like information about the formulation of a specific lot, please contact our scientific support team who will be happy to help.

纯度	Immunogen affinity purified
克隆	多克隆
同种型	IgG

应用

The Abpromise guarantee **Abpromise™**承诺保证使用ab125973于以下的经测试应用

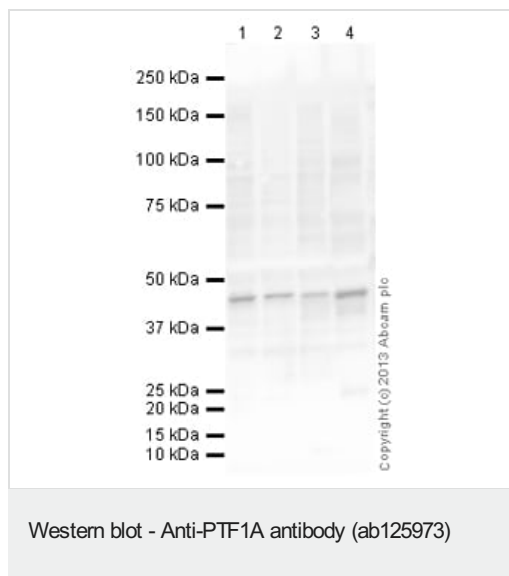
“应用说明”部分 下显示的仅为推荐的起始稀释度;实际最佳的稀释度/浓度应由使用者检定。

应用	Ab评论	说明
WB		Use a concentration of 1 µg/ml. Detects a band of approximately 46 kDa (predicted molecular weight: 35 kDa).

靶标

功能	Transcriptional activator. Binds to the E-box consensus sequence 5'-CANNTG-3'. Plays an important role in determining whether cells allocated to the pancreatic buds continue towards pancreatic organogenesis or revert back to duodenal fates. May be involved in the maintenance of exocrine pancreas-specific gene expression including ELA1 and amylase. Required for the formation of pancreatic acinar and ductal cells (By similarity). Plays an important role in cerebellar development.
组织特异性	Pancreas-specific (at protein level). Loss of expression is seen in ductal type pancreas cancers.
疾病相关	Defects in PTF1A are the cause of diabetes mellitus and cerebellar hypoplasia/agenesis (DMCH) [MIM:609069].
序列相似性	Contains 1 basic helix-loop-helix (bHLH) domain.
细胞定位	Nucleus. Cytoplasm. In chronic pancreatitis associated with pancreas cancer preferentially accumulates in the cytoplasm of acinar/ductular complexes. In the cytoplasm loses its ability to form the PTF1 complex.
形式	PTF1A is a pancreas specific transcription factor. Mammalian studies have implicated important roles for the basic helix-loop-helix transcription factor PTF1A-p48 in the development of both exocrine and endocrine pancreas.

图片



All lanes : Anti-PTF1A antibody (ab125973) at 1 µg/ml

Lane 1 : Brain (Mouse) Tissue Lysate

Lane 2 : Brain (Rat) Tissue Lysate

Lane 3 : Cerebellum Mouse Tissue Lysate

Lane 4 : Cerebellum Rat Tissue Lysate

Lysates/proteins at 10 µg per lane.

Secondary

All lanes : Goat Anti-Rabbit IgG H&L (HRP) ([ab97051](#)) at 1/10000 dilution

Developed using the ECL technique.

Performed under reducing conditions.

Predicted band size: 35 kDa

Observed band size: 46 kDa

Exposure time: 4 minutes

The predicted molecular weight of PTF1A is 35 kDa (SwissProt), however we expect to observe a banding pattern around 48 kDa. Abcam welcomes customer feedback and would appreciate any comments regarding this product and the data presented above. This blot was produced using a 4-12% Bis-tris gel under the MOPS buffer system. The gel was run at 200V for 50 minutes before being transferred onto a Nitrocellulose membrane at 30V for 70 minutes. The membrane was then blocked for an hour using 5% Bovine Serum Albumin before being incubated with ab125973 overnight at 4°C. Antibody binding was detected using an anti-rabbit antibody conjugated to HRP, and visualised using ECL development solution.

Please note: All products are "FOR RESEARCH USE ONLY. NOT FOR USE IN DIAGNOSTIC PROCEDURES"

Our Abpromise to you: Quality guaranteed and expert technical support

- Replacement or refund for products not performing as stated on the datasheet
- Valid for 12 months from date of delivery
- Response to your inquiry within 24 hours
- We provide support in Chinese, English, French, German, Japanese and Spanish
- Extensive multi-media technical resources to help you
- We investigate all quality concerns to ensure our products perform to the highest standards

If the product does not perform as described on this datasheet, we will offer a refund or replacement. For full details of the Abpromise, please visit <https://www.abcam.cn/abpromise> or contact our technical team.

Terms and conditions

- Guarantee only valid for products bought direct from Abcam or one of our authorized distributors