


Anti-PSMD14 antibody [EPR4258] ab109130

重组 RabMAb

2 References 3 图像

概述

产品名称	Anti-PSMD14抗体[EPR4258]
描述	兔单克隆抗体[EPR4258] to PSMD14
宿主	Rabbit
经测试应用	适用于: WB, IP 不适用于: Flow Cyt, ICC/IF or IHC-P
种属反应性	与反应: Human 预测可用于: Mouse, Rat 
免疫原	Synthetic peptide. This information is proprietary to Abcam and/or its suppliers.
阳性对照	WB: HepG2, A431, K562, Namalwa, HeLa, and MCF7 cell lysates. IP: K-562 cell lysate.
常规说明	This product is a recombinant monoclonal antibody, which offers several advantages including: <ul style="list-style-type: none">- High batch-to-batch consistency and reproducibility- Improved sensitivity and specificity- Long-term security of supply- Animal-free production For more information see here . Our RabMAb [®] technology is a patented hybridoma-based technology for making rabbit monoclonal antibodies. For details on our patents, please refer to RabMAb[®] patents .

性能

形式	Liquid
存放说明	Shipped at 4°C. Store at -20°C. Stable for 12 months at -20°C.
存储溶液	pH: 7.20 Preservative: 0.05% Sodium azide Constituents: 0.1% BSA, 40% Glycerol (glycerin, glycerine), 9.85% Tris glycine, 50% Tissue culture supernatant
纯度	Protein A purified
克隆	单克隆
克隆编号	EPR4258

同种型

IgG

应用

The Abpromise guarantee

Abpromise™ 承诺保证使用 ab109130 于以下的经测试应用

“应用说明”部分下显示的仅为推荐的起始稀释度；实际最佳的稀释度/浓度应由使用者检定。

应用	Ab评论	说明
WB		1/1000 - 1/10000. Detects a band of approximately 35 kDa (predicted molecular weight: 35 kDa).
IP		1/30.

应用说明

Is unsuitable for Flow Cyt, ICC/IF or IHC-P.

靶标

功能

Metalloprotease component of the 26S proteasome that specifically cleaves 'Lys-63'-linked polyubiquitin chains. The 26S proteasome is involved in the ATP-dependent degradation of ubiquitinated proteins. The function of the 'Lys-63'-specific deubiquitination of the proteasome is unclear.

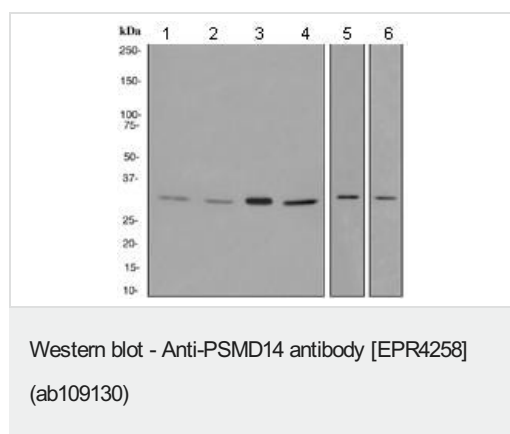
组织特异性

Widely expressed. Highest levels in heart and skeletal muscle.

序列相似性

Belongs to the peptidase M67A family, PSMD14 subfamily. Contains 1 MPN (JAB/Mov34) domain.

图片



All lanes : Anti-PSMD14 antibody [EPR4258] (ab109130) at 1/1000 dilution

Lane 1 : HepG2 cell lysate

Lane 2 : A431 cell lysate

Lane 3 : K562 cell lysate

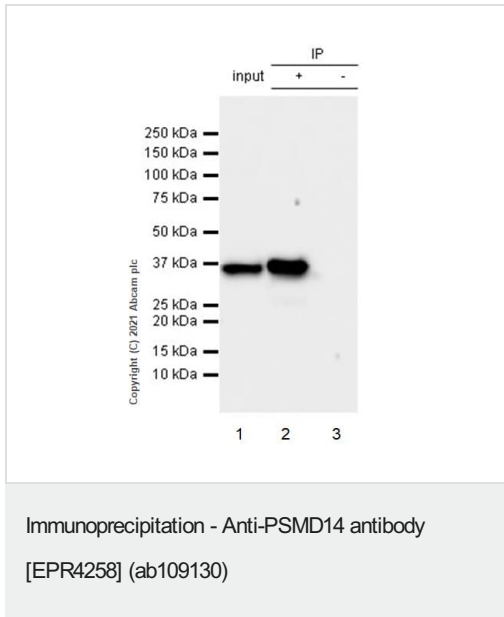
Lane 4 : Namalwa cell lysate

Lane 5 : HeLa cell lysate

Lane 6 : MCF7 cell lysate

Lysates/proteins at 10 µg per lane.

Predicted band size: 35 kDa



PSMD14 was immunoprecipitated from 0.35 mg K-562 (Human chronic myelogenous leukemia lymphoblast) whole cell lysate 10 µg with 109130 at 1/50 dilution (2µg). VeriBlot for IP Detection Reagent (HRP)([ab131366](#)) was used at 1/5000 dilution.

Lane 1: K-562 (Human chronic myelogenous leukemia lymphoblast) whole cell lysate 10 µg

Lane 2: ab109130 IP in K-562 whole cell lysate

Lane 3: Rabbit monoclonal IgG ([ab172730](#)) instead of ab109130 in K-562 whole cell lysate

Blocking and dilution buffer and concentration: 5% NFDN/TBST.

Why choose a recombinant antibody?

- Research with confidence**
Consistent and reproducible results
- Long-term and scalable supply**
Recombinant technology
- Success from the first experiment**
Confirmed specificity
- Ethical standards compliant**
Animal-free production

Anti-PSMD14 antibody [EPR4258] (ab109130)

Please note: All products are "FOR RESEARCH USE ONLY. NOT FOR USE IN DIAGNOSTIC PROCEDURES"

Our Abpromise to you: Quality guaranteed and expert technical support

- Replacement or refund for products not performing as stated on the datasheet
- Valid for 12 months from date of delivery
- Response to your inquiry within 24 hours
- We provide support in Chinese, English, French, German, Japanese and Spanish
- Extensive multi-media technical resources to help you
- We investigate all quality concerns to ensure our products perform to the highest standards

If the product does not perform as described on this datasheet, we will offer a refund or replacement. For full details of the Abpromise, please visit <https://www.abcam.cn/abpromise> or contact our technical team.

Terms and conditions

- Guarantee only valid for products bought direct from Abcam or one of our authorized distributors