

Anti-PSMD11 antibody ab99413

★★★★★ [5 Abreviews](#) [1 References](#) [2 图像](#)

概述

产品名称	Anti-PSMD11抗体
描述	兔多克隆抗体to PSMD11
宿主	Rabbit
经测试应用	适用于: WB, IP
种属反应性	与反应: Mouse, Human 预测可用于: Rat, Rabbit, Guinea pig, Cow, Dog, Turkey, Pig, Chimpanzee, Drosophila melanogaster, Zebrafish, Rhesus monkey, Gorilla, Orangutan, Xenopus tropicalis 
免疫原	Synthetic peptide, corresponding to a region within amino acids 175-225 of Human PSMD11 (NP_002806.2).
阳性对照	Human HeLa and 293T cell lines. Mouse NIH3T3 cell line.
常规说明	<p>The Life Science industry has been in the grips of a reproducibility crisis for a number of years. Abcam is leading the way in addressing this with our range of recombinant monoclonal antibodies and knockout edited cell lines for gold-standard validation. Please check that this product meets your needs before purchasing.</p> <p>If you have any questions, special requirements or concerns, please send us an inquiry and/or contact our Support team ahead of purchase. Recommended alternatives for this product can be found below, along with publications, customer reviews and Q&As</p>

性能

形式	Liquid
存放说明	Shipped at 4°C. Upon delivery aliquot and store at -20°C. Avoid freeze / thaw cycles.
存储溶液	pH: 6.8 Preservative: 0.09% Sodium azide Constituents: 0.1% BSA, Tris buffered saline
纯度	Immunogen affinity purified
克隆	多克隆
同种型	IgG

应用

The Abpromise guarantee

Abpromise™承诺保证使用ab99413于以下的经测试应用

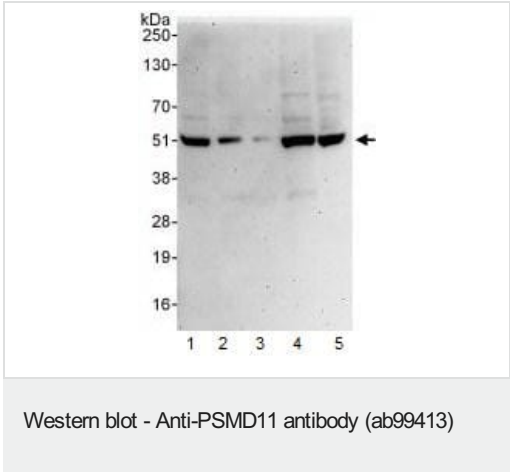
“应用说明”部分 下显示的仅为推荐的起始稀释度;实际最佳的稀释度/浓度应由使用者检定。

应用	Ab评论	说明
WB	★★★★★ (3)	1/2000 - 1/10000. Predicted molecular weight: 47 kDa.
IP	★★★★★ (2)	Use at 2-5 µg/mg of lysate.

靶标

功能	Component of the lid subcomplex of the 26S proteasome, a multiprotein complex involved in the ATP-dependent degradation of ubiquitinated proteins. In the complex, PSMD11 is required for proteasome assembly. Plays a key role in increased proteasome activity in embryonic stem cells (ESCs): its high expression in ESCs promotes enhanced assembly of the 26S proteasome, followed by higher proteasome activity.
组织特异性	Highly expressed in embryonic stem cells (ESCs). Expression decreases as ESCs differentiate.
序列相似性	Belongs to the proteasome subunit S9 family. Contains 1 PCI domain.
翻译后修饰	Phosphorylated by AMPK.
细胞定位	Nucleus. Cytoplasm > cytosol.

图片



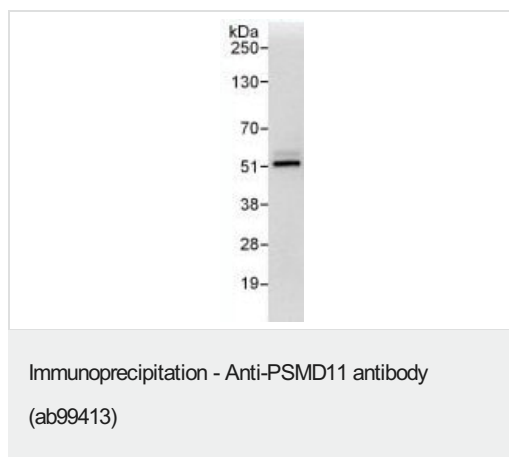
All lanes : Anti-PSMD11 antibody (ab99413) at 0.04 µg/ml

- Lane 1 : Hela whole cell lysate at 50 µg
- Lane 2 : Hela whole cell lysate at 15 µg
- Lane 3 : Hela whole cell lysate at 5 µg
- Lane 4 : 293T whole cell lysate at 50 µg
- Lane 5 : NIH3T3 whole cell lysate at 50 µg

Developed using the ECL technique.

Predicted band size: 47 kDa

Exposure time: 3 minutes



Immunoprecipitation : 1 mg of HeLa cell lysate

immunoprecipitated with ab99413 at 3 µg/mg lysate; 20% of immunoprecipitate loaded in lane

Western Blot: anti-PSMD11 antibody (ab99413) at 0.4 µg/ml

developed using the ECL technique

Exposure time : 10 seconds

Predicted band size : 47 kDa

Please note: All products are "FOR RESEARCH USE ONLY. NOT FOR USE IN DIAGNOSTIC PROCEDURES"

Our Abpromise to you: Quality guaranteed and expert technical support

- Replacement or refund for products not performing as stated on the datasheet
- Valid for 12 months from date of delivery
- Response to your inquiry within 24 hours
- We provide support in Chinese, English, French, German, Japanese and Spanish
- Extensive multi-media technical resources to help you
- We investigate all quality concerns to ensure our products perform to the highest standards

If the product does not perform as described on this datasheet, we will offer a refund or replacement. For full details of the Abpromise, please visit <https://www.abcam.cn/abpromise> or contact our technical team.

Terms and conditions

- Guarantee only valid for products bought direct from Abcam or one of our authorized distributors