




Anti-PSMD1 antibody ab2941

8 References **1 图像**

概述

| | |
|-------|---|
| 产品名称 | Anti-PSMD1抗体 |
| 描述 | 兔多克隆抗体to PSMD1 |
| 宿主 | Rabbit |
| 特异性 | Detects proteasome Rpn2 from human cells. |
| 经测试应用 | 适用于: WB |
| 种属反应性 | 与反应: Mouse, Rat, Human, African green monkey 预测可用于: Chicken  |
| 免疫原 | Synthetic peptide corresponding to Human PSMD1 aa 929-953. Sequence: AAHGPKIEEEEQEPEPPEPFYIDD <div>  Run BLAST with  Run BLAST with </div> |
| 常规说明 | <p>The Life Science industry has been in the grips of a reproducibility crisis for a number of years. Abcam is leading the way in addressing this with our range of recombinant monoclonal antibodies and knockout edited cell lines for gold-standard validation. Please check that this product meets your needs before purchasing.</p> <p>If you have any questions, special requirements or concerns, please send us an inquiry and/or contact our Support team ahead of purchase. Recommended alternatives for this product can be found below, along with publications, customer reviews and Q&As</p> |

性能

| | |
|------|--|
| 形式 | Liquid |
| 存放说明 | Shipped at 4°C. Store at +4°C short term (1-2 weeks). Upon delivery aliquot. Store at -20°C or -80°C. Avoid freeze / thaw cycle. |
| 存储溶液 | Preservative: 0.05% Sodium azide Constituents: 0.1% BSA, 99% PBS |
| 纯度 | Immunogen affinity purified |
| 克隆 | 多克隆 |
| 同种型 | IgG |

应用

The Abpromise guarantee **Abpromise™**承诺保证使用ab2941于以下的经测试应用

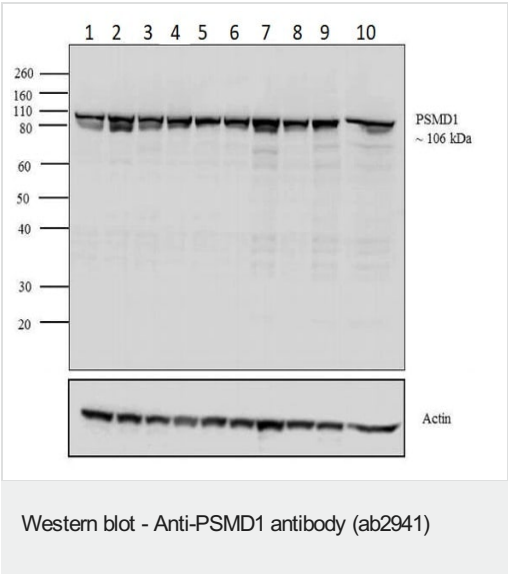
“应用说明”部分 下显示的仅为推荐的起始稀释度;实际最佳的稀释度/浓度应由使用者检定。

| 应用 | Ab评论 | 说明 |
|----|------|---|
| WB | | Use a concentration of 1 µg/ml. Detects a band of approximately 105 kDa (predicted molecular weight: 105 kDa). By Western blot, this antibody detects an ~105 kDa protein representing proteasome 19S subunit S1 from HeLa cell extract. |

靶标

| | |
|-------|---|
| 功能 | Acts as a regulatory subunit of the 26 proteasome which is involved in the ATP-dependent degradation of ubiquitinated proteins. |
| 序列相似性 | Belongs to the proteasome subunit S1 family. Contains 10 PC repeats. |

图片



All lanes : Anti-PSMD1 antibody (ab2941) at 1 µg/ml

- Lane 1 :** MCF7 cell lysate
- Lane 2 :** PC-3 cell lysate
- Lane 3 :** HepG2 cell lysate
- Lane 4 :** SK-OV-3 cell lysate
- Lane 5 :** HeLa cell lysate
- Lane 6 :** COS-7 cell lysate
- Lane 7 :** Jurkat cell lysate
- Lane 8 :** A431 cell lysate
- Lane 9 :** Mouse testis tissue lysate
- Lane 10 :** Rat testis tissue lysate

Lysates/proteins at 30 µg per lane.

Secondary

All lanes : Goat anti-Rabbit IgG (H+L) Superclonal™ HRP conjugate at 1/2500 dilution

Developed using the ECL technique.

Predicted band size: 105 kDa
Observed band size: 106 kDa

Please note: All products are "FOR RESEARCH USE ONLY. NOT FOR USE IN DIAGNOSTIC PROCEDURES"

Our Abpromise to you: Quality guaranteed and expert technical support

- Replacement or refund for products not performing as stated on the datasheet
- Valid for 12 months from date of delivery
- Response to your inquiry within 24 hours
- We provide support in Chinese, English, French, German, Japanese and Spanish
- Extensive multi-media technical resources to help you
- We investigate all quality concerns to ensure our products perform to the highest standards

If the product does not perform as described on this datasheet, we will offer a refund or replacement. For full details of the Abpromise, please visit <https://www.abcam.cn/abpromise> or contact our technical team.

Terms and conditions

- Guarantee only valid for products bought direct from Abcam or one of our authorized distributors