


Anti-PSMA3 antibody ab96746

3 图像

概述

产品名称	Anti-PSMA3抗体
描述	兔多克隆抗体to PSMA3
宿主	Rabbit
经测试应用	适用于: WB, IHC-P
种属反应性	与反应: Mouse, Human 预测可用于: Rat, Cow, Zebrafish 
免疫原	Recombinant fragment corresponding to Human PSMA3 aa 1-147. Database link: P25788
阳性对照	MOLT4 whole cell lysate; U87 xenograft; Raji cell lysate
常规说明	<p>The Life Science industry has been in the grips of a reproducibility crisis for a number of years. Abcam is leading the way in addressing this with our range of recombinant monoclonal antibodies and knockout edited cell lines for gold-standard validation. Please check that this product meets your needs before purchasing.</p> <p>If you have any questions, special requirements or concerns, please send us an inquiry and/or contact our Support team ahead of purchase. Recommended alternatives for this product can be found below, along with publications, customer reviews and Q&As</p>

性能

形式	Liquid
存放说明	Shipped at 4°C. Upon delivery aliquot and store at -20°C or -80°C. Avoid repeated freeze / thaw cycles.
存储溶液	pH: 7.00 Preservative: 0.01% Thimerosal (merthiolate) Constituents: 1.21% Tris, 0.75% Glycine, 20% Glycerol (glycerin, glycerine)
纯度	Immunogen affinity purified
克隆	多克隆
同种型	IgG

应用

The Abpromise guarantee

Abpromise™承诺保证使用ab96746于以下的经测试应用

“应用说明”部分 下显示的仅为推荐的起始稀释度;实际最佳的稀释度/浓度应由使用者检定。

应用	Ab评论	说明
WB		1/500 - 1/3000. Predicted molecular weight: 28 kDa.
IHC-P		1/100 - 1/500.

靶标

功能

The proteasome is a multicatalytic proteinase complex which is characterized by its ability to cleave peptides with Arg, Phe, Tyr, Leu, and Glu adjacent to the leaving group at neutral or slightly basic pH. The proteasome has an ATP-dependent proteolytic activity. Binds to the C-terminus of CDKN1A and thereby mediates its degradation. Negatively regulates the membrane trafficking of the cell-surface thromboxane A2 receptor (TBXA2R) isoform 2.

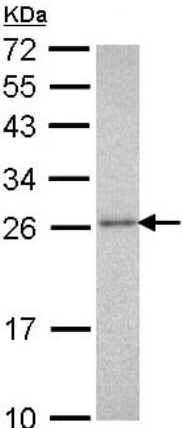
序列相似性

Belongs to the peptidase T1A family.

细胞定位

Cytoplasm. Nucleus.

图片

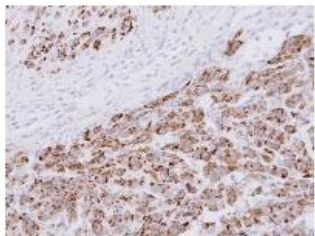


Western blot - Anti-PSMA3 antibody (ab96746)

Anti-PSMA3 antibody (ab96746) at 1/1000 dilution + MOLT4 whole cell lysate at 30 µg

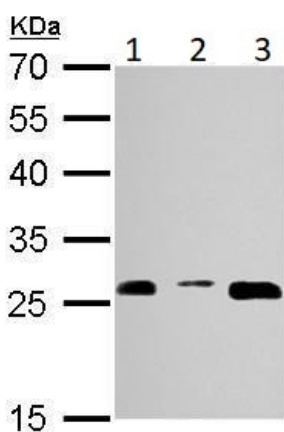
Predicted band size: 28 kDa

12% SDS PAGE



Immunohistochemistry (Formalin/PFA-fixed paraffin-embedded sections) - Anti-PSMA3 antibody (ab96746)

ab96746, at 1/100 dilution, staining PSMA3 in paraffin-embedded U87 xenograft by Immunohistochemistry.



Western blot - Anti-PSMA3 antibody (ab96746)

All lanes : Anti-PSMA3 antibody (ab96746) at 1/1000 dilution

Lane 1 : NIH/3T3 (mouse embryo fibroblast cell line) whole cell lysate/extract

Lane 2 : JC whole cell lysate/extract

Lane 3 : BCL-1 whole cell lysate/extract

Lysates/proteins at 30 µg per lane.

Predicted band size: 28 kDa

Please note: All products are "FOR RESEARCH USE ONLY. NOT FOR USE IN DIAGNOSTIC PROCEDURES"

Our Abpromise to you: Quality guaranteed and expert technical support

- Replacement or refund for products not performing as stated on the datasheet
- Valid for 12 months from date of delivery
- Response to your inquiry within 24 hours
- We provide support in Chinese, English, French, German, Japanese and Spanish
- Extensive multi-media technical resources to help you
- We investigate all quality concerns to ensure our products perform to the highest standards

If the product does not perform as described on this datasheet, we will offer a refund or replacement. For full details of the Abpromise, please visit <https://www.abcam.cn/abpromise> or contact our technical team.

Terms and conditions

- Guarantee only valid for products bought direct from Abcam or one of our authorized distributors