

Anti-PRPF8/Prp8 antibody [2834C1a] ab51366

[2 References](#) [4 图像](#)

概述

产品名称	Anti-PRPF8/Prp8抗体[2834C1a]
描述	小鼠单克隆抗体[2834C1a] to PRPF8/Prp8
宿主	Mouse
经测试应用	适用于: Flow Cyt, WB, IHC-P
种属反应性	与反应: Mouse, Human
免疫原	Recombinant fragment corresponding to Human PRPF8/Prp8.
阳性对照	NIH3T3 whole cell lysate, HeLa whole cell lysate This antibody gave a positive result in IHC in the following FFPE tissue: Human normal cervix.
常规说明	<p>The Life Science industry has been in the grips of a reproducibility crisis for a number of years. Abcam is leading the way in addressing this with our range of recombinant monoclonal antibodies and knockout edited cell lines for gold-standard validation. Please check that this product meets your needs before purchasing.</p> <p>If you have any questions, special requirements or concerns, please send us an inquiry and/or contact our Support team ahead of purchase. Recommended alternatives for this product can be found below, along with publications, customer reviews and Q&As</p>

性能

形式	Liquid
存放说明	Shipped at 4°C. Store at +4°C short term (1-2 weeks). Upon delivery aliquot. Store at -20°C long term.
存储溶液	pH: 7.40 Preservative: 0.05% Sodium azide Constituents: 1% BSA, PBS
纯度	Protein G purified
纯化说明	Filtered through a 0.22 µm membrane.
克隆	单克隆
克隆编号	2834C1a
同种型	IgG1

应用

The Abpromise guarantee **Abpromise™**承诺保证使用ab51366于以下的经测试应用

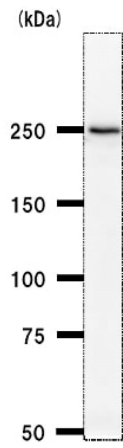
“应用说明”部分 下显示的仅为推荐的起始稀释度;实际最佳的稀释度/浓度应由使用者检定。

应用	Ab评论	说明
Flow Cyt		Use 2µg for 10 ⁶ cells. ab170190 - Mouse monoclonal IgG1, is suitable for use as an isotype control with this antibody.
WB		1/100. Predicted molecular weight: 273 kDa.
IHC-P		Use a concentration of 5 µg/ml. Perform heat mediated antigen retrieval with citrate buffer pH 6 before commencing with IHC staining protocol.

靶标

功能	Central component of the spliceosome, which may play a role in aligning the pre-mRNA 5'- and 3'-exons for ligation. Interacts with U5 snRNA, and with pre-mRNA 5'-splice sites in B spliceosomes and 3'-splice sites in C spliceosomes.
组织特异性	Widely expressed.
疾病相关	Defects in PRPF8 are the cause of retinitis pigmentosa type 13 (RP13) [MIM:600059]. RP leads to degeneration of retinal photoreceptor cells. Patients typically have night vision blindness and loss of midperipheral visual field. As their condition progresses, they lose their far peripheral visual field and eventually central vision as well. RP13 inheritance is autosomal dominant.
序列相似性	Contains 1 MPN (JAB/Mov34) domain.
结构域	The MPN domain has structural similarity with viral ribonucleases and RNase H, but unlike RNases, it does not bind any metal ions.
翻译后修饰	Phosphorylated upon DNA damage, probably by ATM or ATR.
细胞定位	Nucleus speckle.

图片



Western blot - Anti-PRPF8/Prp8 antibody [2834C1a] (ab51366)

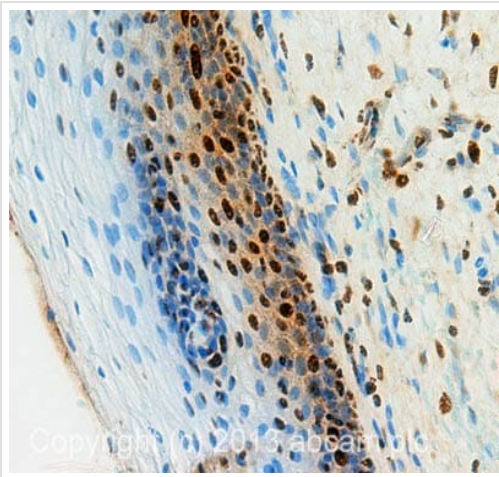
Anti-PRPF8/Prp8 antibody [2834C1a] (ab51366) at 1/100 dilution
+ HeLa whole cell lysate at 25 µg

Secondary

Anti mouse IgG antibody at 1/2500 dilution

Predicted band size: 273 kDa

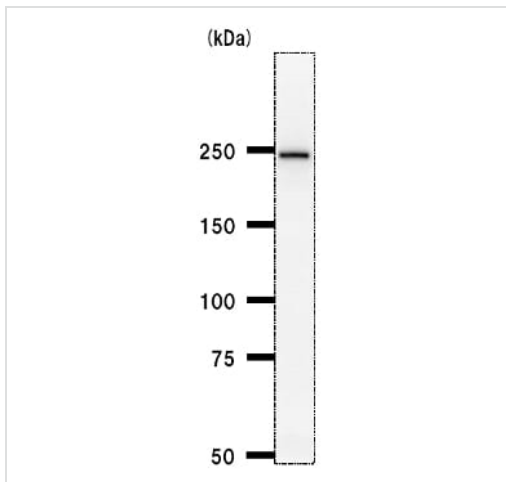
Observed band size: 250 kDa



Immunohistochemistry (Formalin/PFA-fixed paraffin-embedded sections) - Anti-PRPF8/Prp8 antibody [2834C1a] (ab51366)

IHC image of PRPF8/Prp8 staining in Human Normal Cervix formalin fixed paraffin embedded tissue section, performed on a Leica Bond™ system using the standard protocol F. The section was pre-treated using heat mediated antigen retrieval with sodium citrate buffer (pH6, epitope retrieval solution 1) for 20 mins. The section was then incubated with ab51366, 5µg/ml, for 15 mins at room temperature and detected using an HRP conjugated compact polymer system. DAB was used as the chromogen. The section was then counterstained with haematoxylin and mounted with DPX.

For other IHC staining systems (automated and non-automated) customers should optimize variable parameters such as antigen retrieval conditions, primary antibody concentration and antibody incubation times.



Western blot - Anti-PRPF8/Prp8 antibody [2834C1a] (ab51366)

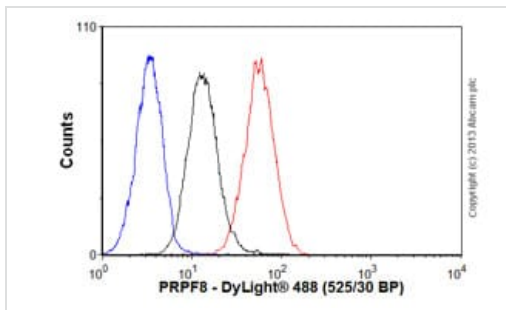
Anti-PRPF8/Prp8 antibody [2834C1a] (ab51366) at 1/100 dilution
+ NIH3T3 whole cell lysate at 25 µg

Secondary

Anti mouse IgG antibody at 1/2500 dilution

Predicted band size: 273 kDa

Observed band size: 250 kDa



Flow Cytometry - Anti-PRPF8/Prp8 antibody [2834C1a] (ab51366)

Overlay histogram showing HeLa cells stained with ab51366 (red line). The cells were fixed with 80% methanol (5 min) and then permeabilized with 0.1% PBS-Tween for 20 min. The cells were then incubated in 1x PBS / 10% normal goat serum / 0.3M glycine to block non-specific protein-protein interactions followed by the antibody (ab51366, 2µg/1x10⁶ cells) for 30 min at 22°C. The secondary antibody used was DyLight® 488 goat anti-mouse IgG (H+L) (**ab96879**) at 1/500 dilution for 30 min at 22°C. Isotype control antibody (black line) was mouse IgG1 [ICIGG1] (**ab91353**, 2µg/1x10⁶ cells) used under the same conditions. Unlabelled sample (blue line). Acquisition of >5,000 events were collected using a 20mW Argon ion laser (488nm) and 525/30 bandpass filter.

Please note: All products are "FOR RESEARCH USE ONLY. NOT FOR USE IN DIAGNOSTIC PROCEDURES"

Our Abpromise to you: Quality guaranteed and expert technical support

- Replacement or refund for products not performing as stated on the datasheet
- Valid for 12 months from date of delivery
- Response to your inquiry within 24 hours
- We provide support in Chinese, English, French, German, Japanese and Spanish
- Extensive multi-media technical resources to help you
- We investigate all quality concerns to ensure our products perform to the highest standards

If the product does not perform as described on this datasheet, we will offer a refund or replacement. For full details of the Abpromise, please visit <https://www.abcam.cn/abpromise> or contact our technical team.

Terms and conditions

- Guarantee only valid for products bought direct from Abcam or one of our authorized distributors