

# Anti-PRPF40B antibody ab122474

## 2 图像

### 概述

产品名称	Anti-PRPF40B抗体
描述	兔多克隆抗体to PRPF40B
宿主	Rabbit
经测试应用	适用于: IHC-P, WB
种属反应性	与反应: Human
免疫原	antigen sequence: KSNSPESETD PEEKAGKESD EKEQEQDKDR ELQQAELPNR SPGFGIKKEK TGWDTSESE, corresponding to C terminal amino acids 792-850 of Human PRPF40B.

[Run BLAST with Expasy](#) [Run BLAST with NCBI](#)

**阳性对照** Human cerebellum tissue.

**常规说明** The Life Science industry has been in the grips of a reproducibility crisis for a number of years. Abcam is leading the way in addressing this with our range of recombinant monoclonal antibodies and knockout edited cell lines for gold-standard validation. Please check that this product meets your needs before purchasing.

If you have any questions, special requirements or concerns, please send us an inquiry and/or contact our Support team ahead of purchase. Recommended alternatives for this product can be found below, along with publications, customer reviews and Q&As

### 性能

形式	Liquid
存放说明	Shipped at 4°C. Upon delivery aliquot and store at -20°C. Avoid freeze / thaw cycles.
存储溶液	pH: 7.20 Preservative: 0.02% Sodium azide Constituents: 59% PBS, 40% Glycerol (glycerin, glycerine)
纯度	Immunogen affinity purified
克隆	多克隆
同种型	IgG

### 应用

## The Abpromise guarantee

**Abpromise™** 承诺保证使用 ab122474 于以下的经测试应用

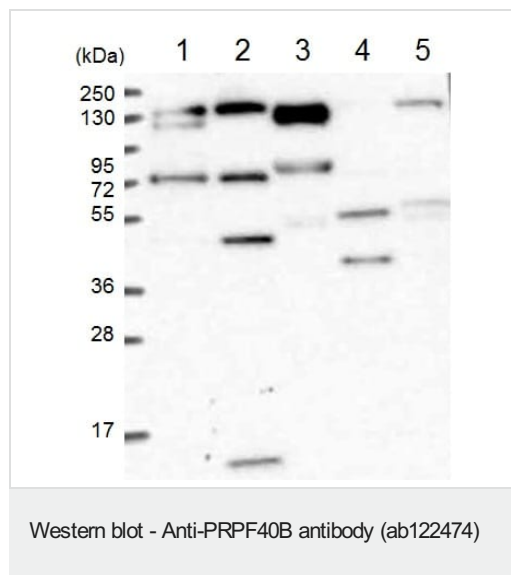
“应用说明”部分下显示的仅为推荐的起始稀释度；实际最佳的稀释度/浓度应由使用者检定。

应用	Ab评论	说明
IHC-P		1/200 - 1/500. Perform heat mediated antigen retrieval with citrate buffer pH 6 before commencing with IHC staining protocol.
WB		1/100 - 1/250. Predicted molecular weight: 99 kDa.

## 靶标

<b>功能</b>	May be involved in pre-mRNA splicing.
<b>组织特异性</b>	Expressed in the striatum and cortex of the brain (at protein level). Highly expressed in testis, fetal kidney and fetal brain. Moderately expressed in pancreas, skeletal muscle, placenta, brain and heart. Weakly expressed in colon, ileum, ovary, prostate, spleen, kidney and fetal lung.
<b>序列相似性</b>	Belongs to the PRPF40 family. Contains 2 FF domains. Contains 2 WW domains.
<b>细胞定位</b>	Nucleus speckle.

## 图片



**All lanes :** Anti-PRPF40B antibody (ab122474) at 1/100 dilution

**Lane 1 :** RT-4 cell lysate

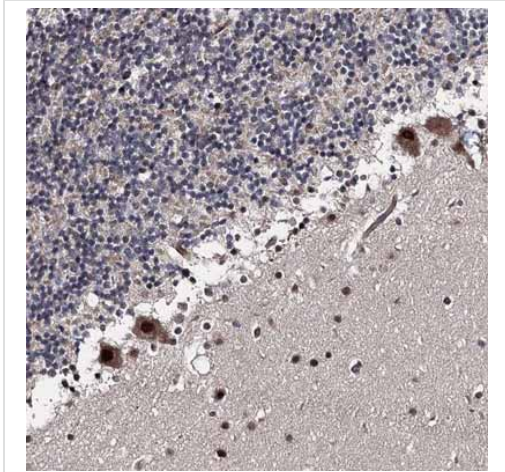
**Lane 2 :** U-251 MG cell lysate

**Lane 3 :** Human plasma

**Lane 4 :** Human liver

**Lane 5 :** Human tonsil

**Predicted band size:** 99 kDa



ab122474, at 1/200 dilution, staining PRPF40B in paraffin-embedded Human cerebellum tissue by Immunohistochemistry.

Immunohistochemistry (Formalin/PFA-fixed paraffin-embedded sections) - Anti-PRPF40B antibody (ab122474)

**Please note:** All products are "FOR RESEARCH USE ONLY. NOT FOR USE IN DIAGNOSTIC PROCEDURES"

### Our Abpromise to you: Quality guaranteed and expert technical support

---

- Replacement or refund for products not performing as stated on the datasheet
- Valid for 12 months from date of delivery
- Response to your inquiry within 24 hours
- We provide support in Chinese, English, French, German, Japanese and Spanish
- Extensive multi-media technical resources to help you
- We investigate all quality concerns to ensure our products perform to the highest standards

If the product does not perform as described on this datasheet, we will offer a refund or replacement. For full details of the Abpromise, please visit <https://www.abcam.cn/abpromise> or contact our technical team.

### Terms and conditions

---

- Guarantee only valid for products bought direct from Abcam or one of our authorized distributors