


Anti-Protein phosphatase 1 inhibitor subunit 2 antibody ab73948

2 图像

概述

产品名称	Anti-Protein phosphatase 1抑制剂subunit 2抗体
描述	兔多克隆抗体to蛋白phosphatase 1抑制剂subunit 2
宿主	Rabbit
经测试应用	适用于: WB, IHC-P
种属反应性	与反应: Human 预测可用于: Mouse, Rat 
免疫原	Synthetic non-phosphopeptide derived from human Protein phosphatase 1 inhibitor subunit 2 around the phosphorylation site of serine 120 and serine 121 (Q-E-S ^P -S ^P -G-E).
阳性对照	Human breast carcinoma tissue. Extracts from Jurkat cells.
常规说明	<p>The Life Science industry has been in the grips of a reproducibility crisis for a number of years. Abcam is leading the way in addressing this with our range of recombinant monoclonal antibodies and knockout edited cell lines for gold-standard validation. Please check that this product meets your needs before purchasing.</p> <p>If you have any questions, special requirements or concerns, please send us an inquiry and/or contact our Support team ahead of purchase. Recommended alternatives for this product can be found below, along with publications, customer reviews and Q&As</p>

性能

形式	Liquid
存放说明	Shipped at 4°C. Store at -20°C. Stable for 12 months at -20°C.
存储溶液	pH: 7.40 Preservative: 0.02% Sodium azide Constituents: 50% Glycerol (glycerin, glycerine), 0.87% Sodium chloride, PBS
纯度	Without Mg ²⁺ and Ca ²⁺ Immunogen affinity purified
克隆	多克隆
同种型	IgG

应用

The Abpromise guarantee **Abpromise™**承诺保证使用ab73948于以下的经测试应用

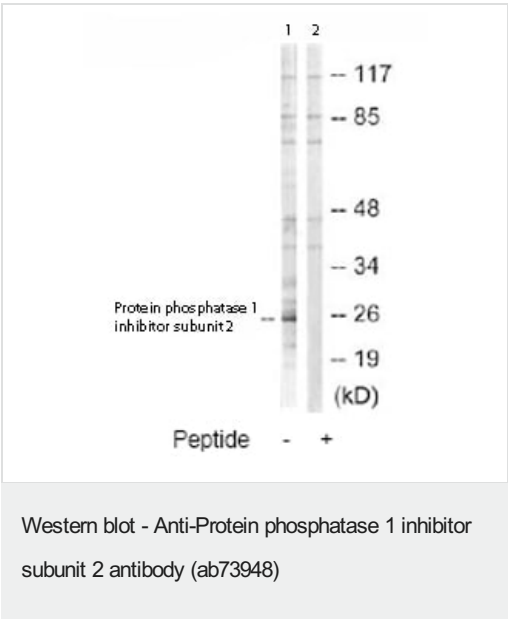
“应用说明”部分 下显示的仅为推荐的起始稀释度;实际最佳的稀释度/浓度应由使用者检定。

应用	Ab评论	说明
WB		1/500 - 1/1000. Detects a band of approximately 25 kDa (predicted molecular weight: 23 kDa).
IHC-P		1/50 - 1/100.

靶标

功能	Inhibitor of protein-phosphatase 1.
序列相似性	Belongs to the protein phosphatase inhibitor 2 family.
翻译后修饰	Phosphorylation on Thr-73 by GSK3 activates PP1 by dissociating the PP1-PPP1R2 complex (By similarity). Phosphorylation on Ser-44 by ATM activates PP1 by dissociating the PP1-PPP1R2 complex.

图片



All lanes : Anti-Protein phosphatase 1 inhibitor subunit 2 antibody (ab73948) at 1/500 dilution

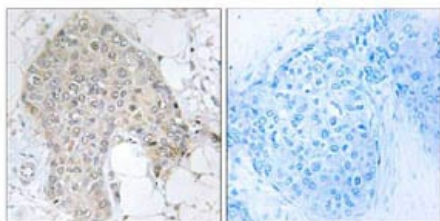
Lane 1 : Extracts from Jurkat cells

Lane 2 : Extracts from Jurkat cells with immunising peptide at 5 µg

Lysates/proteins at 5 µg per lane.

Predicted band size: 23 kDa

Observed band size: 25 kDa



Peptide

Immunohistochemistry (Formalin/PFA-fixed paraffin-embedded sections) - Anti-Protein phosphatase 1 inhibitor subunit 2 antibody (ab73948)

Immunohistochemistry analysis of paraffin-embedded human breast carcinoma tissue using ab73948, at 1/50 dilution, in the presence (right panel) or absence (left panel) of immunising peptide.

Please note: All products are "FOR RESEARCH USE ONLY. NOT FOR USE IN DIAGNOSTIC PROCEDURES"

Our Abpromise to you: Quality guaranteed and expert technical support

- Replacement or refund for products not performing as stated on the datasheet
- Valid for 12 months from date of delivery
- Response to your inquiry within 24 hours
- We provide support in Chinese, English, French, German, Japanese and Spanish
- Extensive multi-media technical resources to help you
- We investigate all quality concerns to ensure our products perform to the highest standards

If the product does not perform as described on this datasheet, we will offer a refund or replacement. For full details of the Abpromise, please visit <https://www.abcam.cn/abpromise> or contact our technical team.

Terms and conditions

- Guarantee only valid for products bought direct from Abcam or one of our authorized distributors