




Anti-Proteasome 20S LMP2 antibody ab106824

★★★★★ [1 Abreviews](#) [2 图像](#)

概述

产品名称	Anti-Proteasome 20S LMP2抗体
描述	山羊多克隆抗体to Proteasome 20S LMP2
宿主	Goat
经测试应用	适用于: WB
种属反应性	与反应: Rat, Human 预测可用于: Mouse, Rabbit, Cow, Dog, Pig, Cynomolgus monkey 
免疫原	Synthetic peptide corresponding to Human Proteasome 20S LMP2 aa 104-113 (internal sequence) (Cysteine residue). Sequence: RNISYKYRED Database link: P28065  Run BLAST with  Run BLAST with
阳性对照	Human Thymus lysate
常规说明	<p>The Life Science industry has been in the grips of a reproducibility crisis for a number of years. Abcam is leading the way in addressing this with our range of recombinant monoclonal antibodies and knockout edited cell lines for gold-standard validation. Please check that this product meets your needs before purchasing.</p> <p>If you have any questions, special requirements or concerns, please send us an inquiry and/or contact our Support team ahead of purchase. Recommended alternatives for this product can be found below, along with publications, customer reviews and Q&As</p>

性能

形式	Liquid
存放说明	Shipped at 4°C. Upon delivery aliquot and store at -20°C. Avoid freeze / thaw cycles.
存储溶液	pH: 7.30 Preservative: 0.02% Sodium azide Constituents: Tris buffered saline, 0.5% BSA
纯度	Immunogen affinity purified
纯化说明	Purified from goat serum by ammonium sulphate precipitation followed by antigen affinity

chromatography using the immunizing peptide.

克隆 多克隆
同种型 IgG

应用

The Abpromise guarantee **Abpromise™**承诺保证使用ab106824于以下的经测试应用

“应用说明”部分 下显示的仅为推荐的起始稀释度;实际最佳的稀释度/浓度应由使用者检定。

应用	Ab评论	说明
WB	★★★★★ (1)	Use a concentration of 0.3 - 1 µg/ml. Predicted molecular weight: 23 kDa. 1 hour primary incubation is recommended for this product.

靶标

功能 The proteasome is a multicatalytic proteinase complex which is characterized by its ability to cleave peptides with Arg, Phe, Tyr, Leu, and Glu adjacent to the leaving group at neutral or slightly basic pH. The proteasome has an ATP-dependent proteolytic activity. This subunit is involved in antigen processing to generate class I binding peptides. Replacement of PSMB6 by PSMB9 increases the capacity of the immunoproteasome to cleave model peptides after hydrophobic and basic residues.

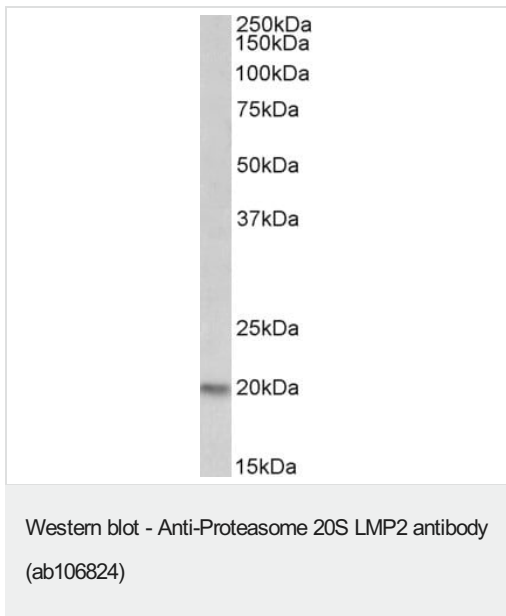
序列相似性 Belongs to the peptidase T1B family.

发展阶段 Highly expressed in immature dendritic cells (at protein level).

翻译后修饰 Autocleaved. The resulting N-terminal Thr residue of the mature subunit is responsible for the nucleophile proteolytic activity.

细胞定位 Cytoplasm. Nucleus.

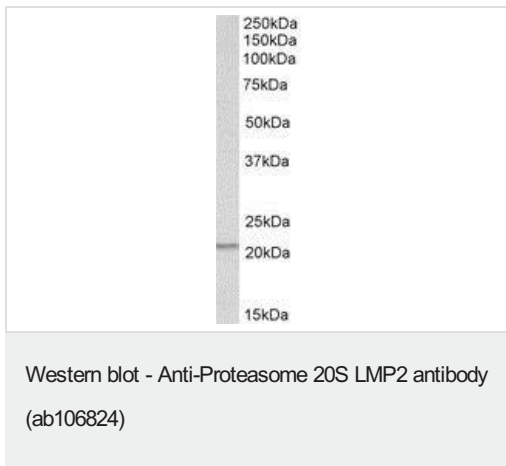
图片



Anti-Proteasome 20S LMP2 antibody (ab106824) at 0.300000011920929 µg/ml + Rat Thymus lysate in RIPA buffer at 35 µg

Developed using the ECL technique.

Predicted band size: 23 kDa



Anti-Proteasome 20S LMP2 antibody (ab106824) at 1 µg/ml + Human Thymus lysate at 35 µg

Developed using the ECL technique.

Predicted band size: 23 kDa

Please note: All products are "FOR RESEARCH USE ONLY. NOT FOR USE IN DIAGNOSTIC PROCEDURES"

Our Abpromise to you: Quality guaranteed and expert technical support

- Replacement or refund for products not performing as stated on the datasheet
- Valid for 12 months from date of delivery
- Response to your inquiry within 24 hours
- We provide support in Chinese, English, French, German, Japanese and Spanish
- Extensive multi-media technical resources to help you
- We investigate all quality concerns to ensure our products perform to the highest standards

If the product does not perform as described on this datasheet, we will offer a refund or replacement. For full details of the Abpromise, please visit <https://www.abcam.cn/abpromise> or contact our technical team.

Terms and conditions

- Guarantee only valid for products bought direct from Abcam or one of our authorized distributors