


Anti-Proteasome 20S alpha 2/HC3 antibody [EPR5453] ab109525

 **RabMAb**

★★★★★ **1 Abreviews** **4 References** **4 图像**

概述

产品名称	Anti-Proteasome 20S alpha 2/HC3抗体[EPR5453]
描述	兔单克隆抗体[EPR5453] to Proteasome 20S alpha 2/HC3
宿主	Rabbit
经测试应用	适用于: WB, IHC-P, ICC/IF 不适用于: IP
种属反应性	与反应: Human 预测可用于: Mouse, Rat 
免疫原	Synthetic peptide. This information is proprietary to Abcam and/or its suppliers.
阳性对照	HepG2, 293T, HeLa or JAR cell lysate; Human brain tissue; HeLa cells
常规说明	This product is a recombinant monoclonal antibody, which offers several advantages including: <ul style="list-style-type: none"> - High batch-to-batch consistency and reproducibility - Improved sensitivity and specificity - Long-term security of supply - Animal-free production For more information see here . Our RabMAb [®] technology is a patented hybridoma-based technology for making rabbit monoclonal antibodies. For details on our patents, please refer to RabMAb[®] patents .

性能

形式	Liquid
存放说明	Shipped at 4°C. Store at -20°C. Stable for 12 months at -20°C.
存储溶液	pH: 7.20 Preservative: 0.05% Sodium azide Constituents: 0.1% BSA, 40% Glycerol (glycerin, glycerine), 9.85% Tris glycine, 50% Tissue culture supernatant
纯度	Protein A purified
克隆	单克隆

克隆编号EPR5453

同种型IgG

应用

The Abpromise guarantee **Abpromise™**承诺保证使用ab109525于以下的经测试应用

“应用说明”部分 下显示的仅为推荐的起始稀释度;实际最佳的稀释度/浓度应由使用者检定。

应用	Ab评论	说明
WB	★★★★★ (1)	1/1000 - 1/10000. Predicted molecular weight: 25 kDa.
IHC-P		1/250 - 1/500. Perform heat mediated antigen retrieval via the microwave method before commencing with IHC staining protocol. (Heat to 98°C, allow to cool for 10-20 minutes)
ICC/IF		1/50 - 1/100.

应用说明 Is unsuitable for IP.

靶标

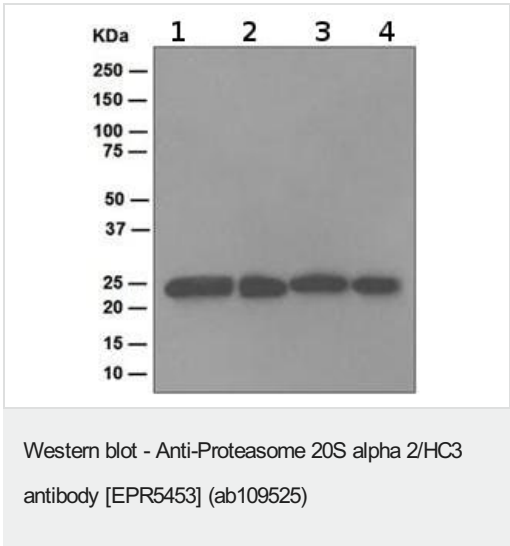
功能 The proteasome is a multicatalytic proteinase complex which is characterized by its ability to cleave peptides with Arg, Phe, Tyr, Leu, and Glu adjacent to the leaving group at neutral or slightly basic pH. The proteasome has an ATP-dependent proteolytic activity. PSMA2 may have a potential regulatory effect on another component(s) of the proteasome complex through tyrosine phosphorylation.

序列相似性 Belongs to the peptidase T1A family.

翻译后修饰 Phosphorylated on tyrosine residues; which may be important for nuclear import.

细胞定位 Cytoplasm. Nucleus.

图片



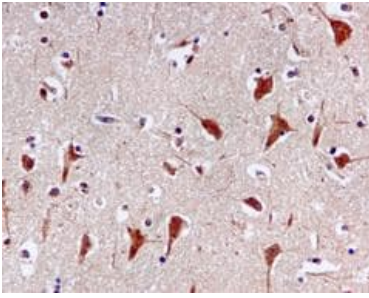
All lanes : Anti-Proteasome 20S alpha 2/HC3 antibody [EPR5453] (ab109525) at 1/10000 dilution

- Lane 1 :** HepG2 cell lysate
- Lane 2 :** 293T (Human embryonic kidney epithelial cell) cell lysate
- Lane 3 :** HeLa cell lysate
- Lane 4 :** JAR cell lysate

Lysates/proteins at 10 µg per lane.

Secondary
All lanes : HRP labelled Goat anti-Rabbit IgG at 1/2000 dilution

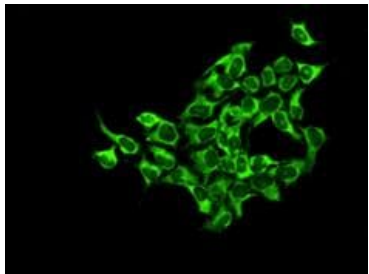
Predicted band size: 25 kDa



Immunohistochemistry (Formalin/PFA-fixed paraffin-embedded sections) - Anti-Proteasome 20S alpha 2/H3 antibody [EPR5453] (ab109525)

ab109525, at a 1/250 dilution, staining Human Proteasome 20S alpha 2/H3 in brain tissue, using Immunohistochemistry, (Formalin/PFA-fixed paraffin-embedded).

Perform heat mediated antigen retrieval via the microwave method before commencing with IHC staining protocol.



Immunocytochemistry/ Immunofluorescence - Anti-Proteasome 20S alpha 2/H3 antibody [EPR5453] (ab109525)

ab109525, at 1/50 dilution, staining Proteasome 20S alpha 2/H3 in HeLa cells by Immunofluorescence.

Why choose a recombinant antibody?



Research with confidence
Consistent and reproducible results



Long-term and scalable supply
Recombinant technology



Success from the first experiment
Confirmed specificity



Ethical standards compliant
Animal-free production

Anti-Proteasome 20S alpha 2/H3 antibody
[EPR5453] (ab109525)

Please note: All products are "FOR RESEARCH USE ONLY. NOT FOR USE IN DIAGNOSTIC PROCEDURES"

Our Abpromise to you: Quality guaranteed and expert technical support

- Replacement or refund for products not performing as stated on the datasheet
- Valid for 12 months from date of delivery
- Response to your inquiry within 24 hours

- We provide support in Chinese, English, French, German, Japanese and Spanish
- Extensive multi-media technical resources to help you
- We investigate all quality concerns to ensure our products perform to the highest standards

If the product does not perform as described on this datasheet, we will offer a refund or replacement. For full details of the Abpromise, please visit <https://www.abcam.cn/abpromise> or contact our technical team.

Terms and conditions

- Guarantee only valid for products bought direct from Abcam or one of our authorized distributors