

# Anti-Prostate Specific Antigen antibody ab9537

★★★★★ [1 Abreviews](#) [7 References](#) [2 图像](#)

### 概述

---

产品名称	Anti-Prostate Specific Antigen抗体
描述	兔多克隆抗体to Prostate Specific Antigen
宿主	Rabbit
经测试应用	适用于: IHC-Fr, IHC-P, ICC/IF
种属反应性	与反应: Human
免疫原	Full length native protein (purified) corresponding to Human Prostate Specific Antigen. Isolated from human seminal plasma. Database link: <a href="#">P07288</a>

### 常规说明

The Life Science industry has been in the grips of a reproducibility crisis for a number of years. Abcam is leading the way in addressing this with our range of recombinant monoclonal antibodies and knockout edited cell lines for gold-standard validation. Please check that this product meets your needs before purchasing.

If you have any questions, special requirements or concerns, please send us an inquiry and/or contact our Support team ahead of purchase. Recommended alternatives for this product can be found below, along with publications, customer reviews and Q&As

### 性能

---

形式	Liquid
存放说明	Shipped at 4°C. Store at +4°C short term (1-2 weeks). Store at -20°C or -80°C. Avoid freeze / thaw cycle.
存储溶液	pH: 7.3 Preservative: 0.05% Sodium azide Constituent: 1% BSA
纯度	IgG fraction
克隆	多克隆
骨髓瘤	unknown
同种型	IgG
轻链类型	unknown

## 应用

**The Abpromise guarantee**      **Abpromise™**承诺保证使用ab9537于以下的经测试应用

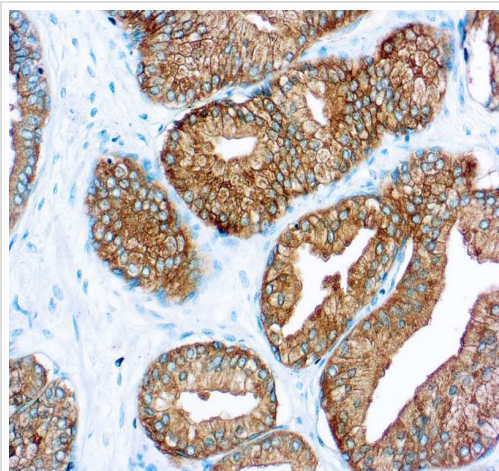
“应用说明”部分 下显示的仅为推荐的起始稀释度;实际最佳的稀释度/浓度应由使用者检定。

应用	Ab评论	说明
IHC-Fr		Use at an assay dependent concentration.
IHC-P		1/50 - 1/150.
ICC/IF	★★★★★ (1)	Use at an assay dependent concentration.

## 靶标

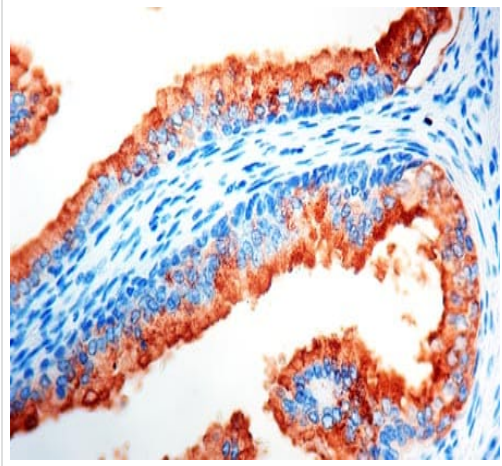
功能	Hydrolyzes semenogelin-1 thus leading to the liquefaction of the seminal coagulum.
序列相似性	Belongs to the peptidase S1 family. Kallikrein subfamily. Contains 1 peptidase S1 domain.
细胞定位	Secreted.

## 图片



Formalin-fixed, paraffin-embedded human prostate carcinoma tissue stained for Prostate Specific Antigen using ab9537 at 1/50 dilution in immunohistochemical analysis. Antigen retrieval with citrate buffer pH 6.0.

Immunohistochemistry (Formalin/PFA-fixed paraffin-embedded sections) - Anti-Prostate Specific Antigen antibody (ab9537)



Immunohistochemical analysis of formalin-fixed, paraffin-embedded Human prostate carcinoma tissue, staining Prostate Specific Antigen with ab9537. Staining was detected using DAB.

Immunohistochemistry (Formalin/PFA-fixed paraffin-embedded sections) - Anti-Prostate Specific Antigen antibody (ab9537)

**Please note:** All products are "FOR RESEARCH USE ONLY. NOT FOR USE IN DIAGNOSTIC PROCEDURES"

### **Our Abpromise to you: Quality guaranteed and expert technical support**

---

- Replacement or refund for products not performing as stated on the datasheet
- Valid for 12 months from date of delivery
- Response to your inquiry within 24 hours
- We provide support in Chinese, English, French, German, Japanese and Spanish
- Extensive multi-media technical resources to help you
- We investigate all quality concerns to ensure our products perform to the highest standards

If the product does not perform as described on this datasheet, we will offer a refund or replacement. For full details of the Abpromise, please visit <https://www.abcam.cn/abpromise> or contact our technical team.

### **Terms and conditions**

---

- Guarantee only valid for products bought direct from Abcam or one of our authorized distributors