

# Anti-Prostaglandin E Receptor EP2/PTGER2 antibody [EPR8030(B)] ab167171

 RabMAb

★★★★★ [2 Abreviews](#) [15 References](#) [7 图像](#)

### 概述

产品名称	Anti-Prostaglandin E Receptor EP2/PTGER2抗体[EPR8030(B)]
描述	兔单克隆抗体[EPR8030(B)] to Prostaglandin E Receptor EP2/PTGER2
宿主	Rabbit
经测试应用	<b>适用于:</b> Flow Cyt (Intra), WB, ICC/IF <b>不适用于:</b> IHC-P
种属反应性	<b>与反应:</b> Mouse, Rat, Cow, Human
免疫原	Synthetic peptide corresponding to Human Prostaglandin E Receptor EP2/PTGER2 aa 300-400 (C terminal). Database link: <a href="#">P43116</a>
阳性对照	Human fetal lung, JAR and WI38 cell lysates. This antibody gave a positive result when used in the following methanol fixed cell lines: SV40LT-SMC
常规说明	This product is a recombinant monoclonal antibody, which offers several advantages including: <ul style="list-style-type: none"><li>- High batch-to-batch consistency and reproducibility</li><li>- Improved sensitivity and specificity</li><li>- Long-term security of supply</li><li>- Animal-free production</li></ul> For more information <a href="#">see here</a> . Our RabMAb <sup>®</sup> technology is a patented hybridoma-based technology for making rabbit monoclonal antibodies. For details on our patents, please refer to <a href="#">RabMAb<sup>®</sup> patents</a> .

### 性能

形式	Liquid
存放说明	Shipped at 4°C. Store at +4°C short term (1-2 weeks). Upon delivery aliquot. Store at -20°C long term. Avoid freeze / thaw cycle.
存储溶液	Preservative: 0.01% Sodium azide Constituents: 40% Glycerol (glycerin, glycerine), 0.05% BSA
纯度	Protein A purified

克隆 单克隆  
克隆编号 EPR8030(B)  
同种型 IgG

## 应用

**The Abpromise guarantee** **Abpromise™**承诺保证使用ab167171于以下的经测试应用

“应用说明”部分下显示的仅为推荐的起始稀释度;实际最佳的稀释度/浓度应由使用者检定。

应用	Ab评论	说明
Flow Cyt (Intra)		1/80 - 1/500. <b>ab172730</b> - Rabbit monoclonal IgG, is suitable for use as an isotype control with this antibody.
WB	★★★★★ (1)	1/1000 - 1/10000. Predicted molecular weight: 40 kDa.
ICC/IF		1/250 - 1/500.

应用说明 Is unsuitable for IHC-P.

## 靶标

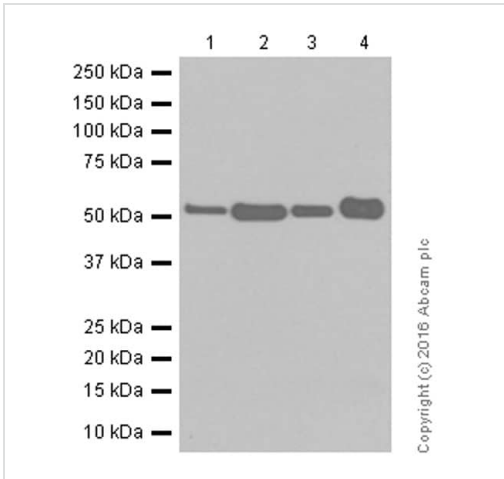
**功能** Receptor for prostaglandin E2 (PGE2). The activity of this receptor is mediated by G(s) proteins that stimulate adenylate cyclase. The subsequent raise in intracellular cAMP is responsible for the relaxing effect of this receptor on smooth muscle.

**组织特异性** Placenta and lung.

**序列相似性** Belongs to the G-protein coupled receptor 1 family.

**细胞定位** Cell membrane.

## 图片



Western blot - Anti-Prostaglandin E Receptor EP2/PTGER2 antibody [EPR8030(B)] (ab167171)

**All lanes :** Anti-Prostaglandin E Receptor EP2/PTGER2 antibody [EPR8030(B)] (ab167171) at 1/1000 dilution

**Lane 1 :** Mouse kidney tissue lysate

**Lane 2 :** Mouse spleen tissue lysate

**Lane 3 :** Rat spleen tissue lysate

**Lane 4 :** MDBK (cow kidney) whole cell lysate

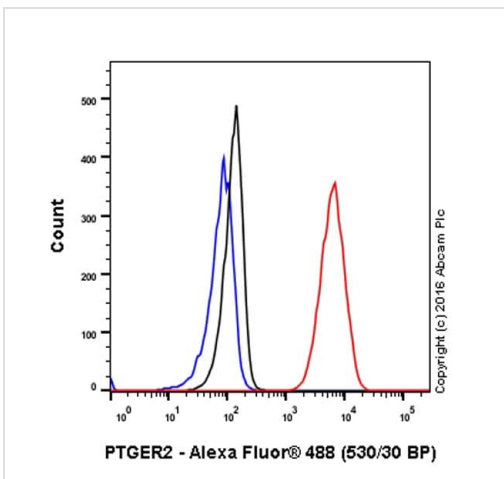
Lysates/proteins at 20 µg per lane.

### Secondary

**All lanes :** Goat Anti-Rabbit IgG H&L (HRP) (**ab97051**) at 1/20000 dilution

**Predicted band size:** 40 kDa

**Blocking and diluting buffer:** 5% NFD/MTBST

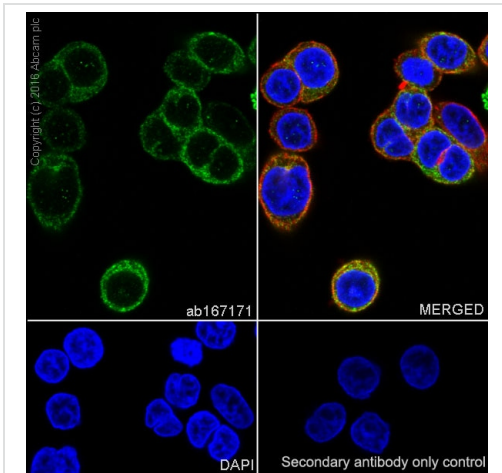


Flow Cytometry (Intracellular) - Anti-Prostaglandin E Receptor EP2/PTGER2 antibody [EPR8030(B)] (ab167171)

ab167171 staining Prostaglandin E Receptor EP2/PTGER2 in the WI-38 (Human Fetal Lung Fibroblast) cell line by intracellular flow cytometry. Cells were fixed with 4% paraformaldehyde and the sample was incubated with the primary antibody at a dilution of 1/80. A goat anti rabbit IgG (Alexa Fluor® 488) at a dilution of 1/2000 was used as the secondary antibody.

**Isotype control:** Rabbit monoclonal IgG (Black)

**Unlabelled control:** Cell without incubation with primary antibody and secondary antibody (Blue)

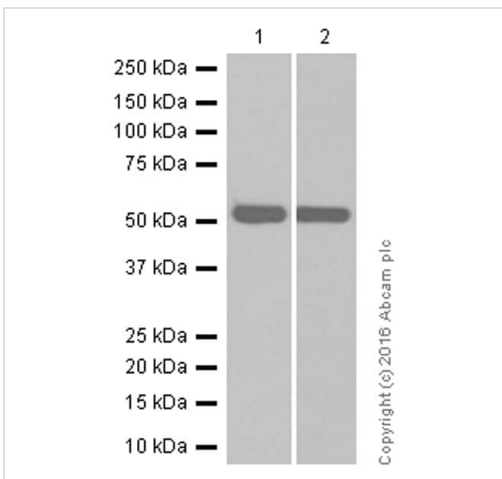


Immunocytochemistry/ Immunofluorescence - Anti-Prostaglandin E Receptor EP2/PTGER2 antibody [EPR8030(B)] (ab167171)

ab167171 staining Prostaglandin E Receptor EP2/PTGER2 in WI-38 (Human Fetal Lung Fibroblast) cells by ICC/IF (Immunocytochemistry/immunofluorescence). Cells were fixed with 4% Paraformaldehyde and permeabilized with 0.1% Triton X-100. Samples were incubated with primary antibody at a dilution of 1/250. A goat anti rabbit IgG (Alexa Fluor® 488) ([ab150077](#)) was used as the secondary antibody at 1/1000. [ab7291](#) and [ab150120](#) were used as counterstains for primary antibody ab167171 and secondary antibody [ab150077](#) respectively and DAPI was used as a nuclear counterstain.

**Negative control 1:** Rabbit primary antibody and anti-mouse secondary antibody ([ab150120](#))

**Negative control 2:** Mouse primary antibody ([ab7291](#)) and anti-rabbit secondary antibody ([ab150077](#))



Western blot - Anti-Prostaglandin E Receptor EP2/PTGER2 antibody [EPR8030(B)] (ab167171)

**All lanes :** Anti-Prostaglandin E Receptor EP2/PTGER2 antibody [EPR8030(B)] (ab167171) at 1/1000 dilution

**Lane 1 :** Mouse kidney tissue lysate

**Lane 2 :** WI-38 (human lung) whole cell lysate

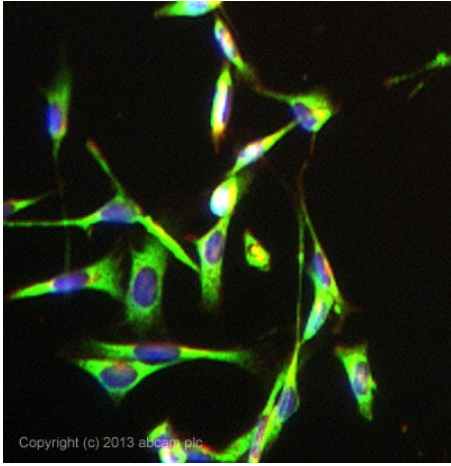
Lysates/proteins at 20 µg per lane.

#### Secondary

**All lanes :** Goat Anti-Rabbit IgG H&L (HRP) ([ab97051](#)) at 1/20000 dilution

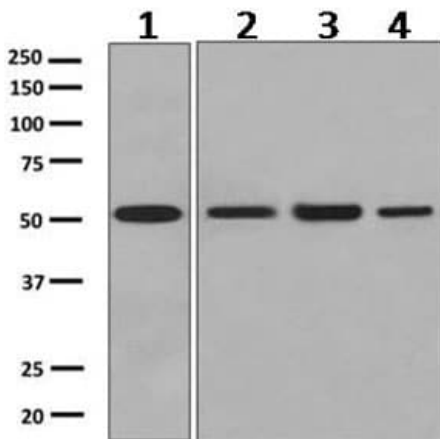
**Predicted band size:** 40 kDa

**Blocking and diluting buffer:** 5% NFD/MTBST



Immunocytochemistry/ Immunofluorescence - Anti-Prostaglandin E Receptor EP2/PTGER2 antibody [EPR8030(B)] (ab167171)

ab167171 stained SV40LT-SMC (rat) cells. The cells were 100% methanol fixed (5 min) and then incubated in 1%BSA / 10% normal goat serum / 0.3M glycine in 0.1% PBS-Tween for 1h to permeabilise the cells and block non-specific protein-protein interactions. The cells were then incubated with the antibody ab167171 at 1/200 dilution overnight at +4°C. The secondary antibody (green) was DyLight® 488 goat anti- rabbit ([ab96899](#)) IgG (H+L) used at a 1/250 dilution for 1h. Alexa Fluor® 594 WGA was used to label plasma membranes (red) at a 1/200 dilution for 1h. DAPI was used to stain the cell nuclei (blue) at a concentration of 1.43µM.



Western blot - Anti-Prostaglandin E Receptor EP2/PTGER2 antibody [EPR8030(B)] (ab167171)

**All lanes :** Anti-Prostaglandin E Receptor EP2/PTGER2 antibody [EPR8030(B)] (ab167171) at 1/1000 dilution

**Lane 1 :** Human placenta lysates

**Lane 2 :** Human fetal lung lysates

**Lane 3 :** JAR cell lysates

**Lane 4 :** WI38 cell lysates

Lysates/proteins at 10 µg per lane.

**Secondary**

**All lanes :** HRP labeled goat anti-rabbit at 1/2000 dilution

**Predicted band size:** 40 kDa

### Why choose a recombinant antibody?



**Research with confidence**  
Consistent and reproducible results



**Long-term and scalable supply**  
Recombinant technology



**Success from the first experiment**  
Confirmed specificity



**Ethical standards compliant**  
Animal-free production

Anti-Prostaglandin E Receptor EP2/PTGER2  
antibody [EPR8030(B)] (ab167171)

**Please note:** All products are "FOR RESEARCH USE ONLY. NOT FOR USE IN DIAGNOSTIC PROCEDURES"

### Our Abpromise to you: Quality guaranteed and expert technical support

---

- Replacement or refund for products not performing as stated on the datasheet
- Valid for 12 months from date of delivery
- Response to your inquiry within 24 hours
- We provide support in Chinese, English, French, German, Japanese and Spanish
- Extensive multi-media technical resources to help you
- We investigate all quality concerns to ensure our products perform to the highest standards

If the product does not perform as described on this datasheet, we will offer a refund or replacement. For full details of the Abpromise, please visit <https://www.abcam.cn/abpromise> or contact our technical team.

### Terms and conditions

---

- Guarantee only valid for products bought direct from Abcam or one of our authorized distributors