


Anti-Prostaglandin E Receptor EP2/PTGER2 antibody ab124419

2 References **2 图像**

概述

产品名称	Anti-Prostaglandin E Receptor EP2/PTGER2抗体
描述	兔多克隆抗体 to Prostaglandin E Receptor EP2/PTGER2
宿主	Rabbit
经测试应用	适用于: WB, IHC-P
种属反应性	与反应: Mouse, Human 预测可用于: Rat 
免疫原	Synthetic peptide corresponding to Human Prostaglandin E Receptor EP2/PTGER2 (C terminal).
常规说明	<p>The Life Science industry has been in the grips of a reproducibility crisis for a number of years. Abcam is leading the way in addressing this with our range of recombinant monoclonal antibodies and knockout edited cell lines for gold-standard validation. Please check that this product meets your needs before purchasing.</p> <p>If you have any questions, special requirements or concerns, please send us an inquiry and/or contact our Support team ahead of purchase. Recommended alternatives for this product can be found below, along with publications, customer reviews and Q&As</p>

性能

形式	Liquid
存放说明	Shipped at 4°C. Store at -20°C. Stable for 12 months at -20°C.
存储溶液	<p>pH: 7.40</p> <p>Preservative: 0.02% Sodium azide</p> <p>Constituents: 49% PBS, 50% Glycerol (glycerin, glycerine), 0.88% Sodium chloride</p> <p>(without Mg²⁺, Ca²⁺)</p>
纯度	Immunogen affinity purified
克隆	多克隆
同种型	IgG

应用

The Abpromise guarantee

Abpromise™ 承诺保证使用ab124419于以下的经测试应用

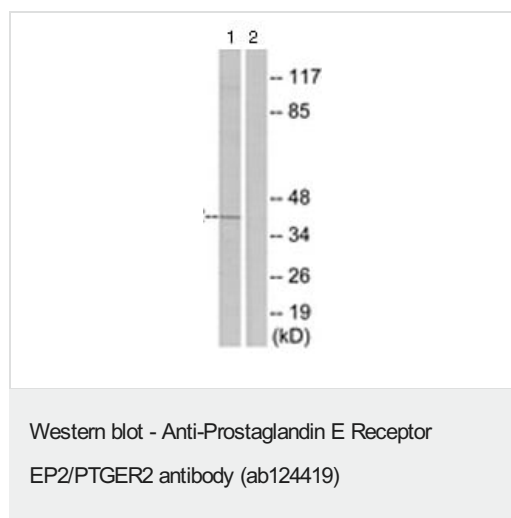
“应用说明”部分 下显示的仅为推荐的起始稀释度;实际最佳的稀释度/浓度应由使用者检定。

应用	Ab评论	说明
WB		1/500 - 1/1000. Predicted molecular weight: 40 kDa.
IHC-P		Use a concentration of 5 µg/ml.

靶标

功能	Receptor for prostaglandin E2 (PGE2). The activity of this receptor is mediated by G(s) proteins that stimulate adenylate cyclase. The subsequent raise in intracellular cAMP is responsible for the relaxing effect of this receptor on smooth muscle.
组织特异性	Placenta and lung.
序列相似性	Belongs to the G-protein coupled receptor 1 family.
细胞定位	Cell membrane.

图片

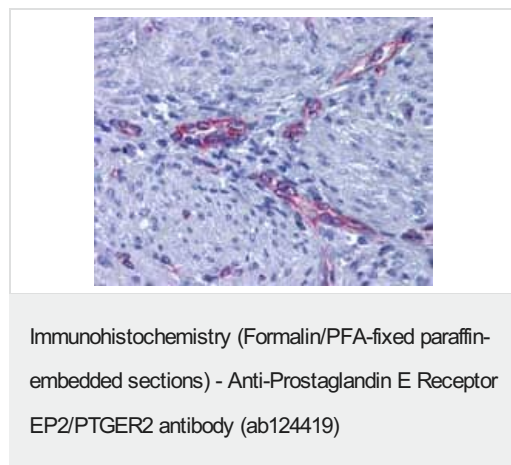


All lanes : Anti-Prostaglandin E Receptor EP2/PTGER2 antibody (ab124419) at 1/500 dilution

Lane 1 : Mouse liver cell extract

Lane 2 : Mouse liver cell extract with synthesized peptide

Predicted band size: 40 kDa



Staining of Prostaglandin E Receptor EP2/PTGER2 in Paraffin-embedded Human Uterus, Myometrium tissue by Immunohistochemistry using ab124419 at a concentration of 5 µg/ml.

Please note: All products are "FOR RESEARCH USE ONLY. NOT FOR USE IN DIAGNOSTIC PROCEDURES"

Our Abpromise to you: Quality guaranteed and expert technical support

- Replacement or refund for products not performing as stated on the datasheet
- Valid for 12 months from date of delivery
- Response to your inquiry within 24 hours

- We provide support in Chinese, English, French, German, Japanese and Spanish
- Extensive multi-media technical resources to help you
- We investigate all quality concerns to ensure our products perform to the highest standards

If the product does not perform as described on this datasheet, we will offer a refund or replacement. For full details of the Abpromise, please visit <https://www.abcam.cn/abpromise> or contact our technical team.

Terms and conditions

- Guarantee only valid for products bought direct from Abcam or one of our authorized distributors