

Anti-Prostaglandin D2 Receptor antibody ab99446

3 References **2 图像**

概述

产品名称	Anti-Prostaglandin D2 Receptor抗体
描述	兔多克隆抗体to Prostaglandin D2 Receptor
宿主	Rabbit
经测试应用	适用于: WB
种属反应性	与反应: Mouse, Rat, Human
免疫原	Synthetic peptide. This information is proprietary to Abcam and/or its suppliers.
阳性对照	This antibody gave a positive signal in the following whole cell lysates: NIH3T3; EL4; Raw 264.7; A549; HepG2 and in the following tissue lysates: Mouse lung; Mouse brain; Mouse kidney; Rat small intestine; Rat kidney.
常规说明	<p>The Life Science industry has been in the grips of a reproducibility crisis for a number of years. Abcam is leading the way in addressing this with our range of recombinant monoclonal antibodies and knockout edited cell lines for gold-standard validation. Please check that this product meets your needs before purchasing.</p> <p>If you have any questions, special requirements or concerns, please send us an inquiry and/or contact our Support team ahead of purchase. Recommended alternatives for this product can be found below, along with publications, customer reviews and Q&As</p>

性能

形式	Liquid
存放说明	Shipped at 4°C. Store at +4°C short term (1-2 weeks). Upon delivery aliquot. Store at -20°C or -80°C. Avoid freeze / thaw cycle.
存储溶液	<p>pH: 7.40</p> <p>Preservative: 0.02% Sodium azide</p> <p>Constituent: PBS</p> <p>Batches of this product that have a concentration < 1mg/ml may have BSA added as a stabilising agent. If you would like information about the formulation of a specific lot, please contact our scientific support team who will be happy to help.</p>
纯度	Immunogen affinity purified
克隆	多克隆

应用

The Abpromise guarantee

Abpromise™ 承诺保证使用ab99446于以下的经测试应用

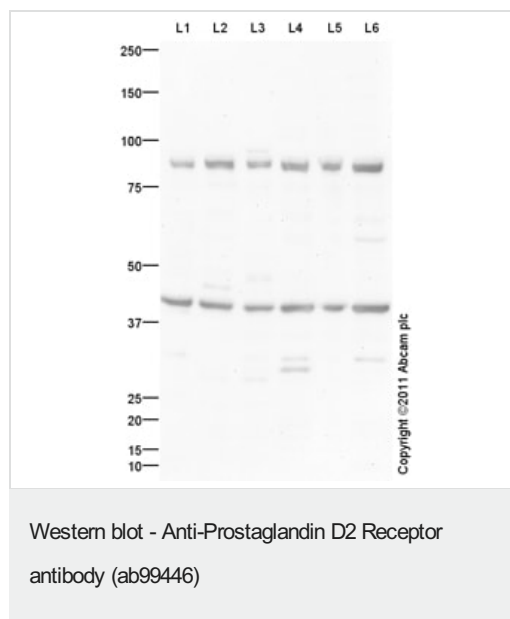
“应用说明”部分 下显示的仅为推荐的起始稀释度;实际最佳的稀释度/浓度应由使用者检定。

应用	Ab评论	说明
WB		Use a concentration of 1 µg/ml. Detects a band of approximately 40 kDa (predicted molecular weight: 40 kDa).

靶标

功能	Receptor for prostaglandin D2 (PGD2). The activity of this receptor is mainly mediated by G(s) proteins that stimulate adenylate cyclase, resulting in an elevation of intracellular cAMP. A mobilization of calcium is also observed, but without formation of inositol 1,4,5-trisphosphate.
组织特异性	Expressed in retinal choroid, ciliary epithelium, longitudinal and circular ciliary muscles, iris, small intestine and platelet membranes.
疾病相关	Genetic variations in PTGDR are associated with susceptibility to asthma-related traits type 1 (ASRT1) [MIM:607277]. Asthma-related traits include clinical symptoms of asthma, such as coughing, wheezing and dyspnea.
序列相似性	Belongs to the G-protein coupled receptor 1 family.
细胞定位	Cell membrane.

图片



All lanes : Anti-Prostaglandin D2 Receptor antibody (ab99446) at 1 µg/ml

Lane 1 : Mouse lung normal tissue lysate - total protein ([ab29297](#))

Lane 2 : Brain (Mouse) Tissue Lysate

Lane 3 : Kidney (Mouse) Tissue Lysate

Lane 4 : NIH 3T3 (Mouse embryonic fibroblast cell line) Whole Cell Lysate

Lane 5 : EL4 whole cell lysate ([ab7183](#))

Lane 6 : RAW 264.7 (Mouse leukaemic monocyte macrophage cell line) Whole Cell Lysate

Lysates/proteins at 10 µg per lane.

Secondary

All lanes : Goat Anti-Rabbit IgG H&L (HRP) preadsorbed ([ab97080](#)) at 1/5000 dilution

Developed using the ECL technique.

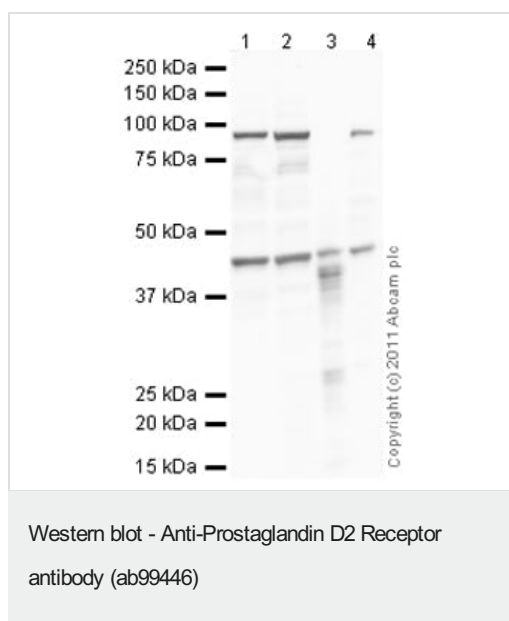
Performed under reducing conditions.

Predicted band size: 40 kDa

Observed band size: 40 kDa

Additional bands at: 87 kDa. We are unsure as to the identity of these extra bands.

Exposure time: 4 minutes



All lanes : Anti-Prostaglandin D2 Receptor antibody (ab99446) at 1 µg/ml

Lane 1 : A549 (Human lung adenocarcinoma epithelial cell line)
Whole Cell Lysate

Lane 2 : HepG2 (Human hepatocellular liver carcinoma cell line)
Whole Cell Lysate

Lane 3 : Small Intestine (Rat) Tissue Lysate

Lane 4 : Kidney (Rat) Tissue Lysate

Lysates/proteins at 10 µg per lane.

Secondary

All lanes : Goat Anti-Rabbit IgG H&L (HRP) preadsorbed ([ab97080](#)) at 1/5000 dilution

Developed using the ECL technique.

Performed under reducing conditions.

Predicted band size: 40 kDa

Observed band size: 45 kDa

Additional bands at: 95 kDa. We are unsure as to the identity of these extra bands.

Exposure time: 1 minute

Please note: All products are "FOR RESEARCH USE ONLY. NOT FOR USE IN DIAGNOSTIC PROCEDURES"

Our Abpromise to you: Quality guaranteed and expert technical support

- Replacement or refund for products not performing as stated on the datasheet
- Valid for 12 months from date of delivery
- Response to your inquiry within 24 hours

- We provide support in Chinese, English, French, German, Japanese and Spanish
- Extensive multi-media technical resources to help you
- We investigate all quality concerns to ensure our products perform to the highest standards

If the product does not perform as described on this datasheet, we will offer a refund or replacement. For full details of the Abpromise, please visit <https://www.abcam.cn/abpromise> or contact our technical team.

Terms and conditions

- Guarantee only valid for products bought direct from Abcam or one of our authorized distributors