

Anti-Prolactin/PRL antibody [INN-hPRL-1] ab11301

[1 References](#) [1 图像](#)

概述

| | |
|--------------|---|
| 产品名称 | Anti-Prolactin/PRL抗体[INN-hPRL-1] |
| 描述 | 小鼠单克隆抗体[INN-hPRL-1] to Prolactin/PRL |
| 宿主 | Mouse |
| 经测试应用 | 适用于: IHC-P |
| 种属反应性 | 与反应: Human |
| 免疫原 | This information is proprietary to Abcam and/or its suppliers. |
| 表位 | Epitope c. |
| 阳性对照 | Human pituitary. |
| 常规说明 | <p>This product should be stored undiluted. Storage in frost free freezers is not recommended. Should this product contain a precipitate we recommend microcentrifugation before use.</p> <p>The Life Science industry has been in the grips of a reproducibility crisis for a number of years. Abcam is leading the way in addressing this with our range of recombinant monoclonal antibodies and knockout edited cell lines for gold-standard validation. Please check that this product meets your needs before purchasing.</p> <p>If you have any questions, special requirements or concerns, please send us an inquiry and/or contact our Support team ahead of purchase. Recommended alternatives for this product can be found below, along with publications, customer reviews and Q&As</p> |

性能

| | |
|-------------|--|
| 形式 | Liquid |
| 存放说明 | Shipped at 4°C. Store at +4°C short term (1-2 weeks). Upon delivery aliquot. Store at -20°C or -80°C. Avoid freeze / thaw cycle. |
| 存储溶液 | Preservative: 0.09% Sodium azide Constituent: PBS |
| 纯度 | Ion Exchange Chromatography |
| 克隆 | 单克隆 |
| 克隆编号 | INN-hPRL-1 |
| 同种型 | IgG1 |

应用

The Abpromise guarantee **Abpromise™**承诺保证使用ab11301于以下的经测试应用

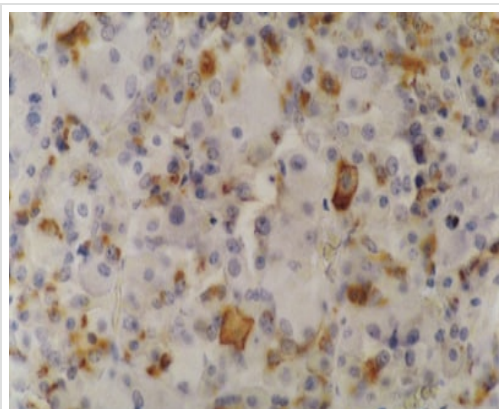
“应用说明”部分 下显示的仅为推荐的起始稀释度;实际最佳的稀释度/浓度应由使用者检定。

| 应用 | Ab评论 | 说明 |
|-------|------|---|
| IHC-P | | 1/500 - 1/1000. Perform heat mediated antigen retrieval before commencing with IHC staining protocol. |

靶标

| | |
|-------------|---|
| 相关性 | Various hormones are secreted from the anterior pituitary during development and growth. Prolactin is a growth factor secreted by the anterior pituitary that is necessary for the proliferation and differentiation of the mammary glands. |
| 细胞定位 | Secreted |

图片



ab11301 staining Prolactin/PRL in Human pituitary tissue by Immunohistochemistry (Formalin/PFA-fixed paraffin-embedded sections). Heat-mediated antigen retrieval (EDTA pH 8.0) was used.

Immunohistochemistry (Formalin/PFA-fixed paraffin-embedded sections) - Anti-Prolactin/PRL antibody [INN-hPRL-1] (ab11301)

Please note: All products are "FOR RESEARCH USE ONLY. NOT FOR USE IN DIAGNOSTIC PROCEDURES"

Our Abpromise to you: Quality guaranteed and expert technical support

- Replacement or refund for products not performing as stated on the datasheet
- Valid for 12 months from date of delivery
- Response to your inquiry within 24 hours
- We provide support in Chinese, English, French, German, Japanese and Spanish
- Extensive multi-media technical resources to help you
- We investigate all quality concerns to ensure our products perform to the highest standards

If the product does not perform as described on this datasheet, we will offer a refund or replacement. For full details of the Abpromise, please visit <https://www.abcam.cn/abpromise> or contact our technical team.

Terms and conditions

- Guarantee only valid for products bought direct from Abcam or one of our authorized distributors