


Anti-pro Caspase-10 antibody [E35] ab32155

RabMAb

4 References **4 图像**

概述

产品名称	Anti-pro Caspase-10抗体[E35]
描述	兔单克隆抗体[E35] to pro Caspase-10
宿主	Rabbit
特异性	The antibody does not crossreact with other Caspase family members.
经测试应用	适用于: ICC/IF, WB, IHC-P, Flow Cyt (Intra)
种属反应性	与反应: Human 预测可用于: Mouse 
免疫原	Synthetic peptide within Human pro Caspase-10 aa 200-300 (N terminal). The exact sequence is proprietary.
阳性对照	WB: Hela cell lysate. ICC/IF and FACS: Hela cells. IHC-P: Human breast carcinoma tissue.
常规说明	<p>Our RabMAb[®] technology is a patented hybridoma-based technology for making rabbit monoclonal antibodies. For details on our patents, please refer to RabMAb[®] patents.</p> <p>The Life Science industry has been in the grips of a reproducibility crisis for a number of years. Abcam is leading the way in addressing this with our range of recombinant monoclonal antibodies and knockout edited cell lines for gold-standard validation. Please check that this product meets your needs before purchasing.</p> <p>If you have any questions, special requirements or concerns, please send us an inquiry and/or contact our Support team ahead of purchase. Recommended alternatives for this product can be found below, along with publications, customer reviews and Q&As</p> <p>Rat: We have preliminary internal testing data to indicate this antibody may not react with this species. Please contact us for more information.</p>

性能

形式	Liquid
存放说明	Shipped at 4°C. Upon delivery aliquot and store at -20°C. Avoid freeze / thaw cycles.
存储溶液	<p>pH: 7.20</p> <p>Preservative: 0.01% Sodium azide</p> <p>Constituents: 49% PBS, 50% Glycerol (glycerin, glycerine), 0.05% BSA</p>

克隆	单克隆
克隆编号	E35
同种型	IgG

应用

The Abpromise guarantee

Abpromise™承诺保证使用ab32155于以下的经测试应用

“应用说明”部分 下显示的仅为推荐的起始稀释度;实际最佳的稀释度/浓度应由使用者检定。

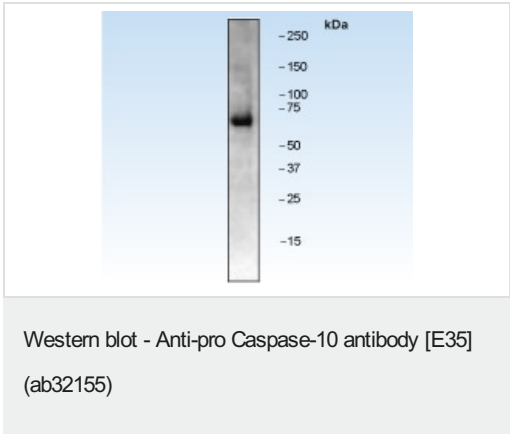
应用	Ab评论	说明
ICC/IF		1/100.
WB		1/1000. Detects a band of approximately 65 kDa (predicted molecular weight: 59 kDa).
IHC-P		Use at an assay dependent concentration. Perform heat mediated antigen retrieval with citrate buffer pH 6 before commencing with IHC staining protocol.
Flow Cyt (Intra)		1/50. ab172730 - Rabbit monoclonal IgG, is suitable for use as an isotype control with this antibody.

靶标

相关性

Caspases are a family of cytosolic aspartate specific cysteine proteases involved in the initiation and execution of apoptosis. Caspase 10 (MCH4, FLICE2) is one of the initiator caspases, and is localized to various tissues. Pro Caspase 10 has two death effector domains (DEDs) that bind FADD and recruits both TNFR1 and CD95 to form complexes with these receptors and induce apoptosis. This death domain complex cleaves pro Caspase 10 into a large active fragment and a small fragment. Cleaved Caspase 10 leads to the processing of Caspase 3 and Caspase 7, initiating a caspase cascade and subsequent apoptosis.

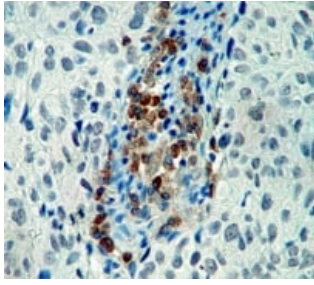
图片



Anti-pro Caspase-10 antibody [E35] (ab32155) at 1/1000 dilution +
Hela cell lysate

Predicted band size: 59 kDa

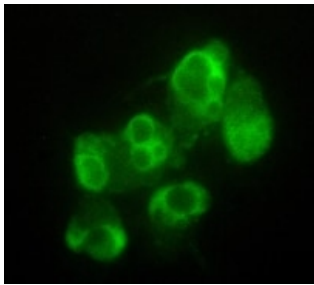
Observed band size: 65 kDa



Immunohistochemistry (Formalin/PFA-fixed paraffin-embedded sections) - Anti-pro Caspase-10 antibody [E35] (ab32155)

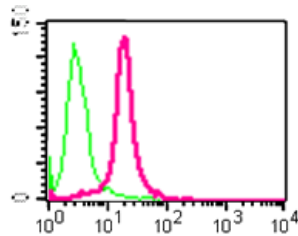
Ab32155, at 1/50 dilution, staining pro Caspase 10 in paraffin embedded human breast carcinoma tissue by Immunohistochemistry.

Perform heat mediated antigen retrieval with citrate buffer pH 6 before commencing with IHC staining protocol.



Immunocytochemistry/ Immunofluorescence - Anti-pro Caspase-10 antibody [E35] (ab32155)

Ab32155, at 1/100 dilution, staining pro Caspase 10 in apoptotic HeLa cells by Immunofluorescence.



Flow Cytometry (Intracellular) - Anti-pro Caspase-10 antibody [E35] (ab32155)

Intracellular flow cytometric analysis of permeabilized HeLa cells using ab32155 at a 1/50 dilution (red) or a rabbit IgG (negative) (green).

Please note: All products are "FOR RESEARCH USE ONLY. NOT FOR USE IN DIAGNOSTIC PROCEDURES"

Our Promise to you: Quality guaranteed and expert technical support

- Replacement or refund for products not performing as stated on the datasheet
- Valid for 12 months from date of delivery
- Response to your inquiry within 24 hours
- We provide support in Chinese, English, French, German, Japanese and Spanish
- Extensive multi-media technical resources to help you
- We investigate all quality concerns to ensure our products perform to the highest standards

If the product does not perform as described on this datasheet, we will offer a refund or replacement. For full details of the Abpromise, please visit <https://www.abcam.cn/abpromise> or contact our technical team.

Terms and conditions

- Guarantee only valid for products bought direct from Abcam or one of our authorized distributors