


Anti-Presenilin 2/AD5 (phospho S330) antibody [EP2614] ab109456

RabMAb

1 图像

概述

| | |
|-------|---|
| 产品名称 | Anti-Presenilin 2/AD5 (phospho S330)抗体[EP2614] |
| 描述 | 兔单克隆抗体[EP2614] to Presenilin 2/AD5 (phospho S330) |
| 宿主 | Rabbit |
| 经测试应用 | 适用于: WB 不适用于: Flow Cyt, ICC/IF, IHC-P or IP |
| 种属反应性 | 与反应: Human 预测可用于: Mouse, Rat  |
| 免疫原 | Synthetic peptide. This information is proprietary to Abcam and/or its suppliers. |
| 阳性对照 | HeLa cell lysates. |
| 常规说明 | Our RabMAb [®] technology is a patented hybridoma-based technology for making rabbit monoclonal antibodies. For details on our patents, please refer to RabMAb[®] patents . The Life Science industry has been in the grips of a reproducibility crisis for a number of years. Abcam is leading the way in addressing this with our range of recombinant monoclonal antibodies and knockout edited cell lines for gold-standard validation. Please check that this product meets your needs before purchasing. If you have any questions, special requirements or concerns, please send us an inquiry and/or contact our Support team ahead of purchase. Recommended alternatives for this product can be found below, along with publications, customer reviews and Q&As |

性能

| | |
|------|--|
| 形式 | Liquid |
| 存放说明 | Shipped at 4°C. Store at -20°C. |
| 存储溶液 | pH: 7.20 Preservative: 0.05% Sodium azide Constituents: 0.1% BSA, 40% Glycerol (glycerin, glycerine), 9.85% Tris glycine, 50% Tissue culture supernatant |
| 纯度 | Tissue culture supernatant |

| | |
|------|--------|
| 克隆 | 单克隆 |
| 克隆编号 | EP2614 |
| 同种型 | IgG |

应用

The Abpromise guarantee **Abpromise™承诺保证使用ab109456于以下的经测试应用**

“应用说明”部分下显示的仅为推荐的起始稀释度;实际最佳的稀释度/浓度应由使用者检定。

| 应用 | Ab评论 | 说明 |
|----|------|---|
| WB | | 1/1000 - 1/10000. Predicted molecular weight: 50 kDa. |

应用说明 Is unsuitable for Flow Cyt, ICC/IF, IHC-P or IP.

靶标

| | |
|----|---|
| 功能 | Probable catalytic subunit of the gamma-secretase complex, an endoprotease complex that catalyzes the intramembrane cleavage of integral membrane proteins such as Notch receptors and APP (beta-amyloid precursor protein). Requires the other members of the gamma-secretase complex to have a protease activity. May play a role in intracellular signaling and gene expression or in linking chromatin to the nuclear membrane. May function in the cytoplasmic partitioning of proteins. |
|----|---|

| | |
|-------|--|
| 组织特异性 | Isoform 1 is seen in the placenta, skeletal muscle and heart while isoform 2 is seen in the heart, brain, placenta, liver, skeletal muscle and kidney. |
|-------|--|

疾病相关

Defects in PSEN2 are the cause of Alzheimer disease type 4 (AD4) [MIM:606889]. AD is an autosomal dominant Alzheimer disease. Alzheimer disease is a neurodegenerative disorder characterized by progressive dementia, loss of cognitive abilities, and deposition of fibrillar amyloid proteins as intraneuronal neurofibrillary tangles, extracellular amyloid plaques and vascular amyloid deposits. The major constituent of these plaques is the neurotoxic amyloid-beta-APP 40-42 peptide (s), derived proteolytically from the transmembrane precursor protein APP by sequential secretase processing. The cytotoxic C-terminal fragments (CTFs) and the caspase-cleaved products such as C31 derived from APP, are also implicated in neuronal death. Defects in PSEN2 are the cause of cardiomyopathy dilated type 1V (CMD1V) [MIM:613697]. It is a disorder characterized by ventricular dilation and impaired systolic function, resulting in congestive heart failure and arrhythmia. Patients are at risk of premature death.

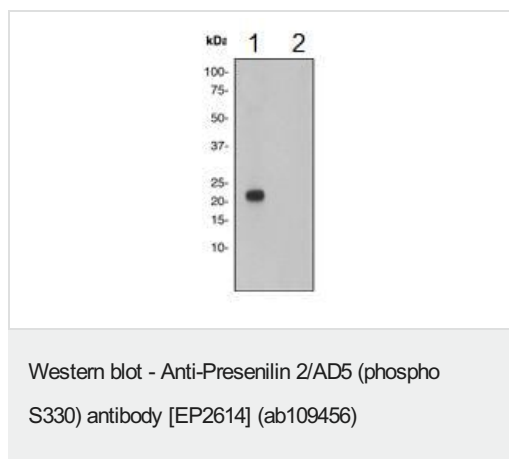
序列相似性 Belongs to the peptidase A22A family.

| | |
|------------|--|
| 结构域 | The PAL motif is required for normal active site conformation. |
|------------|--|

| | |
|-------|---|
| 翻译后修饰 | Heterogeneous proteolytic processing generates N-terminal and C-terminal fragments. Phosphorylated on serine residues. |
|-------|---|

细胞定位 Endoplasmic reticulum membrane. Golgi apparatus membrane.

图片



All lanes : Anti-Presenilin 2/AD5 (phospho S330) antibody [EP2614] (ab109456) at 1/5000 dilution

Lane 1 : HeLa cell lysate untreated with with Alkaline Phosphatase

Lane 2 : HeLa cell lysate treated with Alkaline Phosphatase

Lysates/proteins at 10 µg per lane.

Secondary

All lanes : HRP-labelled goat anti-rabbit at 1/2000 dilution

Predicted band size: 50 kDa

Please note: All products are "FOR RESEARCH USE ONLY. NOT FOR USE IN DIAGNOSTIC PROCEDURES"

Our Abpromise to you: Quality guaranteed and expert technical support

- Replacement or refund for products not performing as stated on the datasheet
- Valid for 12 months from date of delivery
- Response to your inquiry within 24 hours
- We provide support in Chinese, English, French, German, Japanese and Spanish
- Extensive multi-media technical resources to help you
- We investigate all quality concerns to ensure our products perform to the highest standards

If the product does not perform as described on this datasheet, we will offer a refund or replacement. For full details of the Abpromise, please visit <https://www.abcam.cn/abpromise> or contact our technical team.

Terms and conditions

- Guarantee only valid for products bought direct from Abcam or one of our authorized distributors