


Anti-Prealbumin antibody ab78548

★★★★★ 1 Abreviews 3 References 5 图像

概述	
产品名称	Anti-Prealbumin抗体
描述	兔多克隆抗体to Prealbumin
宿主	Rabbit
特异性	From Jan 2024, QC testing of replenishment batches of this polyclonal changed. All tested and expected application and reactive species combinations are still covered by our Abcam product promise. However, we no longer test all applications. For more information on a specific batch, please contact our Scientific Support who will be happy to help.
经测试应用	适用于: IHC-P, ICC/IF, WB
种属反应性	与反应: Human 预测可用于: Mouse, Rat, Rabbit, Pig, Chimpanzee, Orangutan 
免疫原	Synthetic peptide corresponding to Human Prealbumin aa 1-100 conjugated to keyhole limpet haemocyanin. (Peptide available as <a href="#">ab94546</a> )
阳性对照	This antibody gave a positive signal in human plasma total protein tissue lysate. IF/ICC: MCF7 cell line. IHC-P: human normal liver FFPE sections.
常规说明	<p>The Life Science industry has been in the grips of a reproducibility crisis for a number of years. Abcam is leading the way in addressing this with our range of recombinant monoclonal antibodies and knockout edited cell lines for gold-standard validation. Please check that this product meets your needs before purchasing.</p> <p>If you have any questions, special requirements or concerns, please send us an inquiry and/or contact our Support team ahead of purchase. Recommended alternatives for this product can be found below, along with publications, customer reviews and Q&amp;As</p>
性能	
形式	Liquid
存放说明	Shipped at 4°C. Store at +4°C short term (1-2 weeks). Upon delivery aliquot. Store at -20°C or -80°C. Avoid freeze / thaw cycle.
存储溶液	pH: 7.40 Preservative: 0.02% Sodium azide Constituent: PBS

Batches of this product that have a concentration < 1mg/ml may have BSA added as a stabilising agent. If you would like information about the formulation of a specific lot, please contact our scientific support team who will be happy to help.

纯度	Immunogen affinity purified
克隆	多克隆
同种型	IgG

## 应用

**The Abpromise guarantee** **Abpromise™** 承诺保证使用ab78548于以下的经测试应用

“应用说明”部分 下显示的仅为推荐的起始稀释度;实际最佳的稀释度/浓度应由使用者检定。

应用	Ab评论	说明
IHC-P		Use a concentration of 1 µg/ml.
ICC/IF		Use a concentration of 5 µg/ml.
WB	★★★★★ (1)	Use a concentration of 1 µg/ml. Detects a band of approximately 16 kDa (predicted molecular weight: 16 kDa).

## 靶标

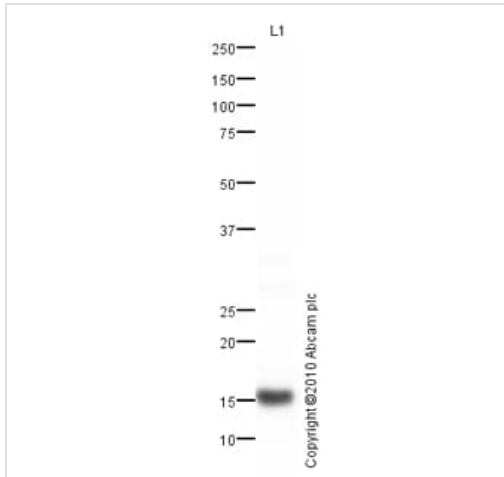
功能	Thyroid hormone-binding protein. Probably transports thyroxine from the bloodstream to the brain.
组织特异性	Detected in serum and cerebrospinal fluid (at protein level). Highly expressed in choroid plexus epithelial cells. Detected in retina pigment epithelium and liver.
疾病相关	<p>Defects in TTR are the cause of amyloidosis transthyretin-related (AMYL-TTR) [MIM:105210]. A hereditary generalized amyloidosis due to transthyretin amyloid deposition. Protein fibrils can form in different tissues leading to amyloid polyneuropathies, amyloidotic cardiomyopathy, carpal tunnel syndrome, systemic senile amyloidosis. The disease includes leptomeningeal amyloidosis that is characterized by primary involvement of the central nervous system. Neuropathologic examination shows amyloid in the walls of leptomeningeal vessels, in pia arachnoid, and subpial deposits. Some patients also develop vitreous amyloid deposition that leads to visual impairment (oculoleptomeningeal amyloidosis). Clinical features include seizures, stroke-like episodes, dementia, psychomotor deterioration, variable amyloid deposition in the vitreous humor.</p> <p>Defects in TTR are a cause of hyperthyroxinemia dysransthyretinemic euthyroidal (HTDE) [MIM:145680]. It is a condition characterized by elevation of total and free thyroxine in healthy, euthyroid persons without detectable binding protein abnormalities.</p> <p>Defects in TTR are a cause of carpal tunnel syndrome type 1 (CTS1) [MIM:115430]. It is a condition characterized by entrapment of the median nerve within the carpal tunnel. Symptoms include burning pain and paresthesias involving the ventral surface of the hand and fingers which may radiate proximally. Impairment of sensation in the distribution of the median nerve and thenar muscle atrophy may occur. This condition may be associated with repetitive occupational trauma, wrist injuries, amyloid neuropathies, rheumatoid arthritis.</p>
序列相似性	Belongs to the transthyretin family.
结构域	Each monomer has two 4-stranded beta sheets and the shape of a prolate ellipsoid. Antiparallel

beta-sheet interactions link monomers into dimers. A short loop from each monomer forms the main dimer-dimer interaction. These two pairs of loops separate the opposed, convex beta-sheets of the dimers to form an internal channel.

## 细胞定位

Secreted. Cytoplasm.

## 图片



Western blot - Anti-Prealbumin antibody (ab78548)

Anti-Prealbumin antibody (ab78548) at 1 µg/ml + Human Plasma  
Total Protein Lysate at 10 µg

### Secondary

Goat polyclonal to Rabbit IgG - H&L - Pre-Adsorbed (HRP) at  
1/3000 dilution

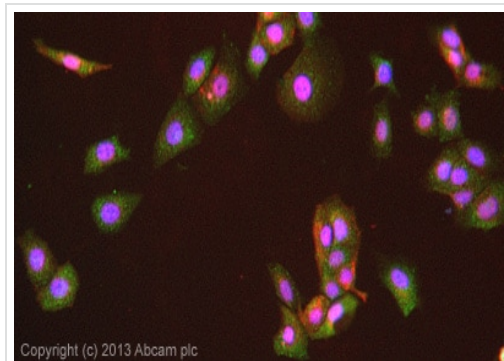
Developed using the ECL technique.

Performed under reducing conditions.

**Predicted band size:** 16 kDa

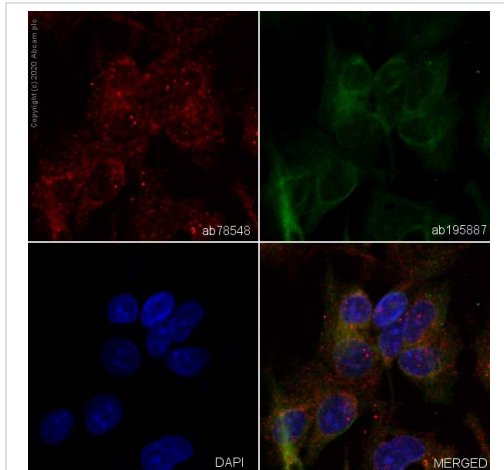
**Observed band size:** 16 kDa

**Exposure time:** 3 minutes



Immunocytochemistry/ Immunofluorescence - Anti-  
Prealbumin antibody (ab78548)

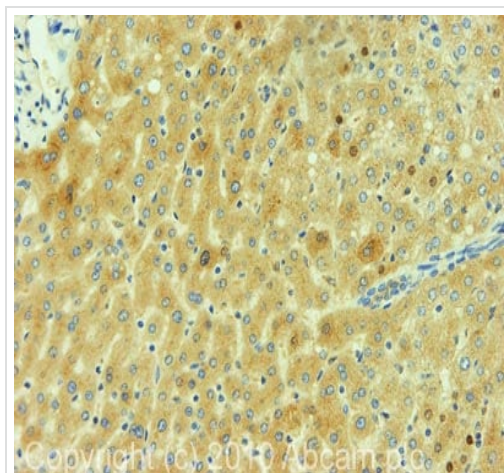
ICC/IF image of ab78548 stained MCF7 cells. The cells were  
4% formaldehyde fixed (10 min) and then incubated in 1%BSA /  
10% normal goat serum / 0.3M glycine in 0.1% PBS-Tween for 1h  
to permeabilise the cells and block non-specific protein-protein  
interactions. The cells were then incubated with the antibody  
(ab78548, 5µg/ml) overnight at +4°C. The secondary antibody  
(green) was [ab96899](#), DyLight® 488 goat anti-rabbit IgG (H+L)  
used at a 1/250 dilution for 1h. Alexa Fluor® 594 WGA was used to  
label plasma membranes (red) at a 1/200 dilution for 1h. DAPI was  
used to stain the cell nuclei (blue) at a concentration of 1.43µM



Immunocytochemistry/ Immunofluorescence - Anti-Prealbumin antibody (ab78548)

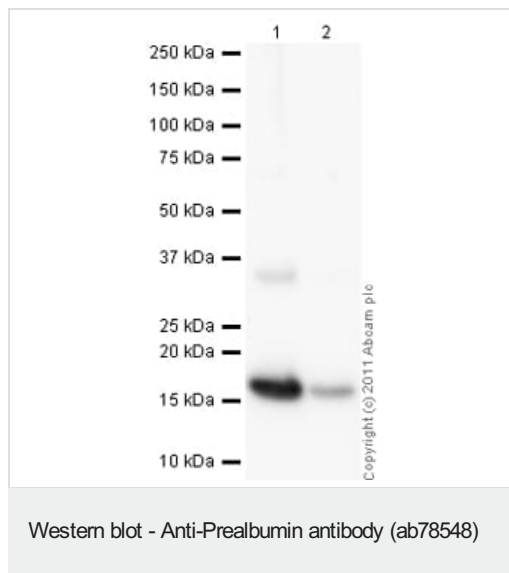
ab78548 staining Prealbumin in HepG2 cells. The cells were fixed with 100% methanol (5 min), permeabilized with 0.1% Triton X-100 for 5 minutes and then blocked with 1% BSA/10% normal goat serum/0.3M glycine in 0.1%PBS-Tween for 1h. The cells were then incubated overnight at +4°C with ab78548 at a 1/100 dilution (shown in red) and **ab195887**, Mouse monoclonal to alpha Tubulin (Alexa Fluor® 488), at a 1/250 dilution (shown in green). The secondary antibody **ab150083** (shown in red), Goat Anti-Rabbit IgG H&L (Alexa Fluor® 647) preadsorbed, was incubated with for 1 hour at room temperature. Nuclear DNA was labelled with DAPI (shown in blue).

Image was taken with a confocal microscope (Leica-Microsystems, TCS SP8).



Immunohistochemistry (Formalin/PFA-fixed paraffin-embedded sections) - Anti-Prealbumin antibody (ab78548)

IHC image of Prealbumin staining in Human Normal Liver FFPE section, performed on a Bond™ system using the standard protocol F. The section was pre-treated using heat mediated antigen retrieval with sodium citrate buffer (pH6, epitope retrieval solution 1) for 20 mins. The section was then incubated with ab78548, 1 µg/ml, for 15 mins at room temperature and detected using an HRP conjugated compact polymer system. DAB was used as the chromogen. The section was then counterstained with haematoxylin and mounted with DPX



**All lanes :** Anti-Prealbumin antibody (ab78548) at 1 µg/ml

**Lane 1 :** Native Human Prealbumin protein ([ab77905](#)) at 0.1 µg

**Lane 2 :** Native Human Prealbumin protein ([ab77905](#)) at 0.01 µg

#### Secondary

**All lanes :** Goat Anti-Rabbit IgG H&L (HRP) preadsorbed ([ab97080](#)) at 1/5000 dilution

Developed using the ECL technique.

Performed under reducing conditions.

**Predicted band size:** 16 kDa

**Exposure time:** 2 minutes

**Please note:** All products are "FOR RESEARCH USE ONLY. NOT FOR USE IN DIAGNOSTIC PROCEDURES"

#### Our Abpromise to you: Quality guaranteed and expert technical support

- Replacement or refund for products not performing as stated on the datasheet
- Valid for 12 months from date of delivery
- Response to your inquiry within 24 hours
- We provide support in Chinese, English, French, German, Japanese and Spanish
- Extensive multi-media technical resources to help you
- We investigate all quality concerns to ensure our products perform to the highest standards

If the product does not perform as described on this datasheet, we will offer a refund or replacement. For full details of the Abpromise, please visit <https://www.abcam.cn/abpromise> or contact our technical team.

#### Terms and conditions

- Guarantee only valid for products bought direct from Abcam or one of our authorized distributors