

Anti-Prealbumin antibody ab106558

[1 References](#) [4 图像](#)

概述

产品名称	Anti-Prealbumin抗体
描述	鸡多克隆抗体to Prealbumin
宿主	Chicken
经测试应用	适用于: WB, IHC-P
种属反应性	与反应: Human, Recombinant fragment
免疫原	Synthetic peptide corresponding to Human Prealbumin (internal sequence). Database link: P02766
阳性对照	WB: Recombinant Prealbumin protein. Human lung tissue lysate. IHC-P: Human lung tissue.
常规说明	<p>The Life Science industry has been in the grips of a reproducibility crisis for a number of years. Abcam is leading the way in addressing this with our range of recombinant monoclonal antibodies and knockout edited cell lines for gold-standard validation. Please check that this product meets your needs before purchasing.</p> <p>If you have any questions, special requirements or concerns, please send us an inquiry and/or contact our Support team ahead of purchase. Recommended alternatives for this product can be found below, along with publications, customer reviews and Q&As</p>

性能

形式	Liquid
存放说明	Shipped at 4°C. Store at +4°C short term (1-2 weeks). Upon delivery aliquot. Store at -20°C long term. Avoid freeze / thaw cycle.
存储溶液	pH: 7.2 Preservative: 0.02% Sodium azide Constituent: PBS
纯度	Immunogen affinity purified
克隆	多克隆
同种型	IgY

应用

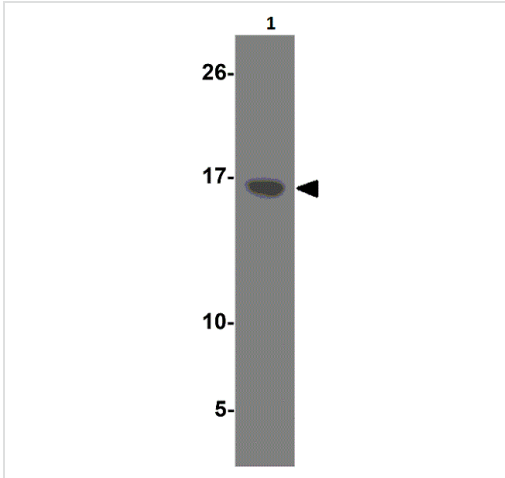
“应用说明”部分下显示的仅为推荐的起始稀释度;实际最佳的稀释度/浓度应由使用者检定。

应用	Ab评论	说明
WB		Use a concentration of 1 - 2 µg/ml. Predicted molecular weight: 16 kDa.
IHC-P		Use a concentration of 2.5 - 20 µg/ml.

靶标

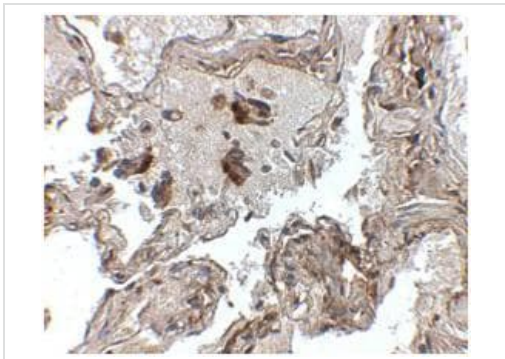
功能	Thyroid hormone-binding protein. Probably transports thyroxine from the bloodstream to the brain.
组织特异性	Detected in serum and cerebrospinal fluid (at protein level). Highly expressed in choroid plexus epithelial cells. Detected in retina pigment epithelium and liver.
疾病相关	<p>Defects in TTR are the cause of amyloidosis transthyretin-related (AMYL-TTR) [MIM:105210]. A hereditary generalized amyloidosis due to transthyretin amyloid deposition. Protein fibrils can form in different tissues leading to amyloid polyneuropathies, amyloidotic cardiomyopathy, carpal tunnel syndrome, systemic senile amyloidosis. The disease includes leptomeningeal amyloidosis that is characterized by primary involvement of the central nervous system. Neuropathologic examination shows amyloid in the walls of leptomeningeal vessels, in pia arachnoid, and subpial deposits. Some patients also develop vitreous amyloid deposition that leads to visual impairment (oculoleptomeningeal amyloidosis). Clinical features include seizures, stroke-like episodes, dementia, psychomotor deterioration, variable amyloid deposition in the vitreous humor.</p> <p>Defects in TTR are a cause of hyperthyroxinemia dystansthyretinemic euthyroidal (HTDE) [MIM:145680]. It is a condition characterized by elevation of total and free thyroxine in healthy, euthyroid persons without detectable binding protein abnormalities.</p> <p>Defects in TTR are a cause of carpal tunnel syndrome type 1 (CTS1) [MIM:115430]. It is a condition characterized by entrapment of the median nerve within the carpal tunnel. Symptoms include burning pain and paresthesias involving the ventral surface of the hand and fingers which may radiate proximally. Impairment of sensation in the distribution of the median nerve and thenar muscle atrophy may occur. This condition may be associated with repetitive occupational trauma, wrist injuries, amyloid neuropathies, rheumatoid arthritis.</p>
序列相似性	Belongs to the transthyretin family.
结构域	Each monomer has two 4-stranded beta sheets and the shape of a prolate ellipsoid. Antiparallel beta-sheet interactions link monomers into dimers. A short loop from each monomer forms the main dimer-dimer interaction. These two pairs of loops separate the opposed, convex beta-sheets of the dimers to form an internal channel.
细胞定位	Secreted. Cytoplasm.

图片



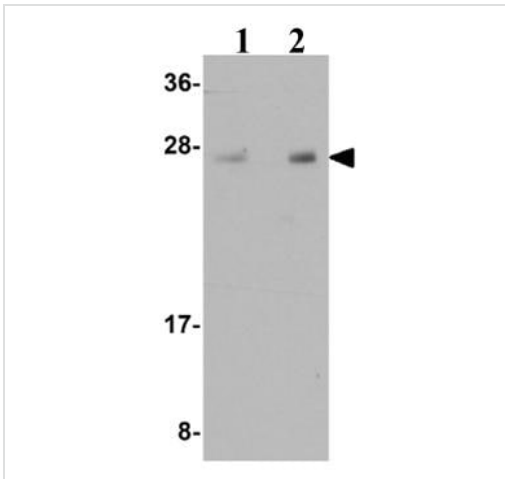
Western blot - Anti-Prealbumin antibody (ab106558)

Western Blot of recombinant Prealbumin protein (125 ng) labeling Prealbumin with Anti-Prealbumin antibody (ab106558) at 1 µg/ml.



Immunohistochemistry (Formalin/PFA-fixed paraffin-embedded sections) - Anti-Prealbumin antibody (ab106558)

Immunohistochemical analysis of Prealbumin in Human lung tissue, using ab106558 at 2.5 µg/ml.



Western blot - Anti-Prealbumin antibody (ab106558)

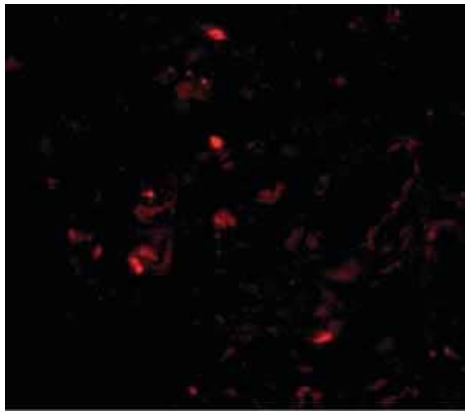
Lane 1 : Anti-Prealbumin antibody (ab106558) at 1 µg/ml

Lane 2 : Anti-Prealbumin antibody (ab106558) at 2 µg/ml

All lanes : Human lung tissue lysate

Lysates/proteins at 15 µg per lane.

Predicted band size: 16 kDa



Immunohistochemical analysis of human lung tissue labelling
Prealbumin with ab106558 at 20 ug/mL.

Immunohistochemistry (Formalin/PFA-fixed paraffin-
embedded sections) - Anti-Prealbumin antibody
(ab106558)

Please note: All products are "FOR RESEARCH USE ONLY. NOT FOR USE IN DIAGNOSTIC PROCEDURES"

Our Abpromise to you: Quality guaranteed and expert technical support

- Replacement or refund for products not performing as stated on the datasheet
- Valid for 12 months from date of delivery
- Response to your inquiry within 24 hours
- We provide support in Chinese, English, French, German, Japanese and Spanish
- Extensive multi-media technical resources to help you
- We investigate all quality concerns to ensure our products perform to the highest standards

If the product does not perform as described on this datasheet, we will offer a refund or replacement. For full details of the Abpromise, please visit <https://www.abcam.cn/abpromise> or contact our technical team.

Terms and conditions

- Guarantee only valid for products bought direct from Abcam or one of our authorized distributors