




# Anti-PRDM1/Blimp1 antibody ab119401

**3 References**   **1 图像**

### 概述

产品名称	Anti-PRDM1/Blimp1抗体
描述	兔多克隆抗体to PRDM1/Blimp1
宿主	Rabbit
经测试应用	适用于: WB
种属反应性	与反应: Human 预测可用于: Mouse, Rat 
免疫原	Synthetic peptide, corresponding to a sequence around amino acids 124-128 (DTVPK) of Human PRDM1/Blimp1 (NP_001189.2 ).  <a href="#">Run BLAST with</a>  <a href="#">Run BLAST with</a>
阳性对照	Jurkat an Raji cell extracts
常规说明	<p>The Life Science industry has been in the grips of a reproducibility crisis for a number of years. Abcam is leading the way in addressing this with our range of recombinant monoclonal antibodies and knockout edited cell lines for gold-standard validation. Please check that this product meets your needs before purchasing.</p> <p>If you have any questions, special requirements or concerns, please send us an inquiry and/or contact our Support team ahead of purchase. Recommended alternatives for this product can be found below, along with publications, customer reviews and Q&amp;As</p>

### 性能

形式	Liquid
存放说明	Shipped at 4°C. Store at -20°C. Stable for 12 months at -20°C.
存储溶液	pH: 7.40 Preservative: 0.02% Sodium azide Constituents: 48% PBS, 50% Glycerol (glycerin, glycerine), 0.88% Sodium chloride  (without Mg2+ and Ca2+)
纯度	Immunogen affinity purified
克隆	多克隆

同种型IgG

应用

The Abpromise guarantee      **Abpromise™**承诺保证使用ab119401于以下的经测试应用

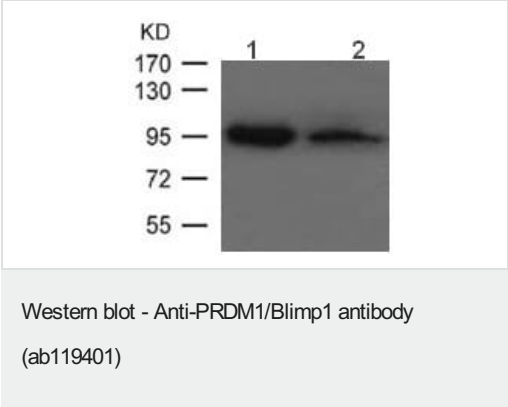
“应用说明”部分 下显示的仅为推荐的起始稀释度;实际最佳的稀释度/浓度应由使用者检定。

应用	Ab评论	说明
WB		1/500 - 1/1000. Detects a band of approximately 95-100 kDa (predicted molecular weight: 93 kDa).

靶标

功能	Transcriptional repressor that binds specifically to the PRDI element in the promoter of the beta-interferon gene (PubMed:1851123). Drives the maturation of B-lymphocytes into Ig secreting cells (PubMed:12626569).
序列相似性	Belongs to the class V-like SAM-binding methyltransferase superfamily. Contains 4 C2H2-type zinc fingers. Contains 1 SET domain.
翻译后修饰	Sumoylation at Lys-816 by PIAS1 augments transcriptional repressor activity, and is critical for plasma cell differentiation. Ubiquitinated by the SCF(FBXO11) complex, leading to its degradation by the proteasome.
细胞定位	Nucleus. Cytoplasm.

图片



**All lanes :** Anti-PRDM1/Blimp1 antibody (ab119401) at 1/500 dilution

**Lane 1 :** Jurkat cell extract

**Lane 2 :** Raji cell extract

**Predicted band size:** 93 kDa

**Please note:** All products are "FOR RESEARCH USE ONLY. NOT FOR USE IN DIAGNOSTIC PROCEDURES"

Our Abpromise to you: Quality guaranteed and expert technical support

- Replacement or refund for products not performing as stated on the datasheet
- Valid for 12 months from date of delivery

- Response to your inquiry within 24 hours
- We provide support in Chinese, English, French, German, Japanese and Spanish
- Extensive multi-media technical resources to help you
- We investigate all quality concerns to ensure our products perform to the highest standards

If the product does not perform as described on this datasheet, we will offer a refund or replacement. For full details of the Abpromise, please visit <https://www.abcam.cn/abpromise> or contact our technical team.

#### **Terms and conditions**

---

- Guarantee only valid for products bought direct from Abcam or one of our authorized distributors