

Anti-PRC1 antibody [6G2] ab39069

★★★★★ [1 Abreviews](#) [1 图像](#)

概述

产品名称	Anti-PRC1抗体[6G2]
描述	小鼠单克隆抗体[6G2] to PRC1
宿主	Mouse
经测试应用	适用于: WB
种属反应性	与反应: Human
免疫原	Synthetic peptide, corresponding to amino acids 1/150 of Human PRC1
阳性对照	HeLa cell extract
常规说明	<p>The Life Science industry has been in the grips of a reproducibility crisis for a number of years. Abcam is leading the way in addressing this with our range of recombinant monoclonal antibodies and knockout edited cell lines for gold-standard validation. Please check that this product meets your needs before purchasing.</p> <p>If you have any questions, special requirements or concerns, please send us an inquiry and/or contact our Support team ahead of purchase. Recommended alternatives for this product can be found below, along with publications, customer reviews and Q&As</p>

性能

形式	Liquid
存放说明	Shipped at 4°C. Store at +4°C short term (1-2 weeks). Store at -20°C or -80°C. Avoid freeze / thaw cycle.
存储溶液	pH: 7.20 Preservative: 0.09% Sodium azide Constituent: PBS
纯度	Protein G purified
纯化说明	ab39069 is an affinity purified IgG.
克隆	单克隆
克隆编号	6G2
同种型	IgG2b
轻链类型	kappa

应用

The Abpromise guarantee **Abpromise™** 承诺保证使用 ab39069 于以下的经测试应用

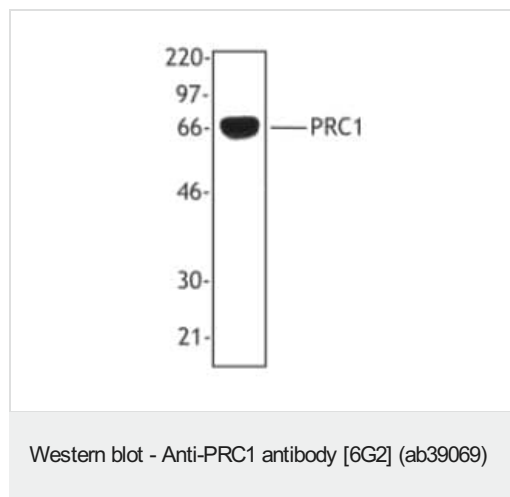
“应用说明”部分 下显示的仅为推荐的起始稀释度;实际最佳的稀释度/浓度应由使用者检定。

应用	Ab评论	说明
WB	★★★★★ (1)	Use a concentration of 1 µg/ml. Predicted molecular weight: 72 kDa.

靶标

功能	Cross-links antiparrallel microtubules at an average distance of 35 nM. Essential for controlling the spatiotemporal formation of the midzone and successful cytokinesis. Required for KIF14 localization to the central spindle and midbody.
序列相似性	Belongs to the MAP65/ASE1 family.
结构域	Microtubule binding occurs via a basic patch in the central spectrin-like domain and requires also the unstructured C-terminal domain.
翻译后修饰	Phosphorylation by CDK1 in early mitosis holds PRC1 in an inactive monomeric state, during the metaphase to anaphase transition, PRC1 is dephosphorylated, promoting interaction with KIF4A, which then translocates PRC1 along mitotic spindles to the plus ends of antiparallel interdigitating microtubules. Dephosphorylation also promotes MT-bundling activity by allowing dimerization.
细胞定位	Nucleus. Cytoplasm. Cytoplasm > cytoskeleton > spindle pole. Predominantly localized to the nucleus of interphase cells. During mitosis becomes associated with the mitotic spindle poles and localizes with the cell midbody during cytokinesis.

图片



Anti-PRC1 antibody [6G2] (ab39069) at 1 µg/ml + HeLa cell extracts

Secondary

goat anti-mouse
secondary conjugated to HRP

Developed using the ECL technique.

Predicted band size: 72 kDa

Observed band size: 66 kDa

Please note: All products are "FOR RESEARCH USE ONLY. NOT FOR USE IN DIAGNOSTIC PROCEDURES"

Our Abpromise to you: Quality guaranteed and expert technical support

- Replacement or refund for products not performing as stated on the datasheet
- Valid for 12 months from date of delivery
- Response to your inquiry within 24 hours

- We provide support in Chinese, English, French, German, Japanese and Spanish
- Extensive multi-media technical resources to help you
- We investigate all quality concerns to ensure our products perform to the highest standards

If the product does not perform as described on this datasheet, we will offer a refund or replacement. For full details of the Abpromise, please visit <https://www.abcam.cn/abpromise> or contact our technical team.

Terms and conditions

- Guarantee only valid for products bought direct from Abcam or one of our authorized distributors