


Anti-PRA1 antibody [EPR1747Y] ab76413

敲除验证 重组 RabMAb

[1 Abreviews](#) [1 References](#) [3 图像](#)

概述

产品名称	Anti-PRA1抗体[EPR1747Y]
描述	兔单克隆抗体[EPR1747Y] to PRA1
宿主	Rabbit
经测试应用	适用于: WB 不适用于: ICC/IF or IHC-P
种属反应性	与反应: Human 预测可用于: Mouse, Rat 
免疫原	Synthetic peptide within Human PRA1 (C terminal). The exact sequence is proprietary.
阳性对照	WB: HeLa and HEK-293T cell lysates.
常规说明	This product is a recombinant monoclonal antibody, which offers several advantages including: <ul style="list-style-type: none">- High batch-to-batch consistency and reproducibility- Improved sensitivity and specificity- Long-term security of supply- Animal-free production For more information see here . Our RabMAb [®] technology is a patented hybridoma-based technology for making rabbit monoclonal antibodies. For details on our patents, please refer to RabMAb[®] patents .

性能

形式	Liquid
存放说明	Shipped at 4°C. Upon delivery aliquot and store at -20°C. Avoid freeze / thaw cycles.
存储溶液	pH: 7.20 Preservative: 0.01% Sodium azide Constituents: 9% PBS, 40% Glycerol (glycerin, glycerine), 0.05% BSA, 50% Tissue culture supernatant
纯度	Protein A purified
克隆	单克隆
克隆编号	EPR1747Y

同种型

IgG

应用

The Abpromise guarantee

Abpromise™ 承诺保证使用 ab76413 于以下的经测试应用

“应用说明”部分下显示的仅为推荐的起始稀释度；实际最佳的稀释度/浓度应由使用者检定。

应用	Ab评论	说明
WB		1/1000 - 1/20000. Predicted molecular weight: 21 kDa.

应用说明

Is unsuitable for ICC/IF or IHC-P.

靶标

功能

General Rab protein regulator required for vesicle formation from the Golgi complex. May control vesicle docking and fusion by mediating the action of Rab GTPases to the SNARE complexes. In addition it inhibits the removal of Rab GTPases from the membrane by GDI.

组织特异性

Ubiquitous. Strongest expression found in placenta, pituitary gland, kidney, lung and stomach.

序列相似性

Belongs to the PRA1 family.

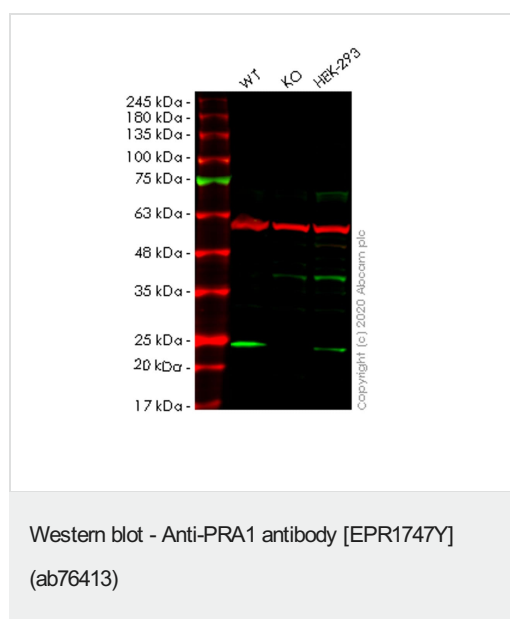
发展阶段

In fetal tissues, it is more abundant in kidney and lung.

细胞定位

Cell membrane. Cytoplasm. Golgi apparatus. Cytoplasmic vesicle > secretory vesicle > synaptic vesicle. According to some authors, it is an integral membrane protein, while others showed that it is cytoplasmic and membrane-associated to Golgi and synaptic vesicles.

图片



All lanes : Anti-PRA1 antibody [EPR1747Y] (ab76413) at 1/1000 dilution

Lane 1 : Wild-type HeLa cell lysate

Lane 2 : RABAC1 knockout HeLa cell lysate

Lane 3 : HEK293 cell lysate

Lysates/proteins at 20 µg per lane.

Secondary

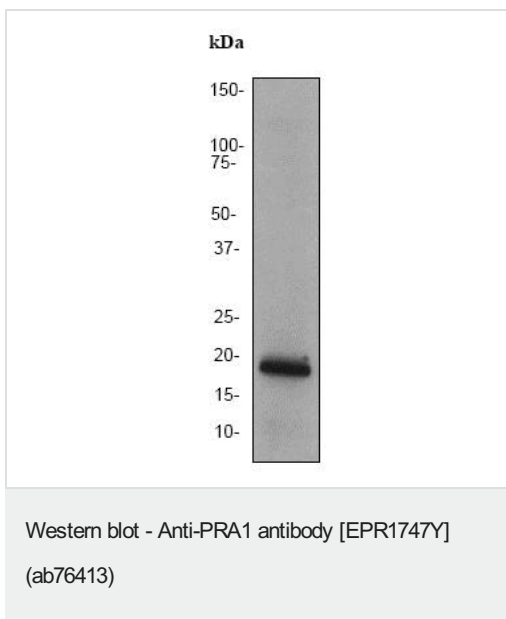
All lanes : Goat anti-Rabbit IgG H&L (IRDye® 800CW) preadsorbed (**ab216773**) at 1/20000 dilution

Predicted band size: 21 kDa

Observed band size: 21 kDa

Lanes 1-3: Merged signal (red and green). Green - ab76413 observed at 21 kDa. Red - loading control **ab7291** observed at 50 kDa.

ab76413 Anti-PRA1 antibody [EPR1747Y] was shown to specifically react with PRA1 in wild-type HeLa cells. Loss of signal was observed when knockout cell line **ab265702** (knockout cell lysate **ab258162**) was used. Wild-type and PRA1 knockout samples were subjected to SDS-PAGE. ab76413 and Anti-alpha Tubulin antibody [DM1A] - Loading Control (**ab7291**) were incubated overnight at 4°C at 1 in 1000 dilution and 1 in 20000 dilution respectively. Blots were developed with Goat anti-Rabbit IgG H&L (IRDye® 800CW) preadsorbed (**ab216773**) and Goat anti-Mouse IgG H&L (IRDye® 680RD) preadsorbed (**ab216776**) secondary antibodies at 1 in 20000 dilution for 1 hour at room temperature before imaging.



Anti-PRA1 antibody [EPR1747Y] (ab76413) at 1/2000 dilution + 293 cell lysate at 10 µg


Secondary

HRP labelled goat anti-rabbit at 1/2000 dilution

Predicted band size: 21 kDa

Observed band size: 21 kDa

Why choose a recombinant antibody?

 <p>Research with confidence Consistent and reproducible results</p>	 <p>Long-term and scalable supply Recombinant technology</p>
 <p>Success from the first experiment Confirmed specificity</p>	 <p>Ethical standards compliant Animal-free production</p>

Anti-PRA1 antibody [EPR1747Y] (ab76413)

Please note: All products are "FOR RESEARCH USE ONLY. NOT FOR USE IN DIAGNOSTIC PROCEDURES"

Our Abpromise to you: Quality guaranteed and expert technical support

- Replacement or refund for products not performing as stated on the datasheet
- Valid for 12 months from date of delivery
- Response to your inquiry within 24 hours
- We provide support in Chinese, English, French, German, Japanese and Spanish
- Extensive multi-media technical resources to help you
- We investigate all quality concerns to ensure our products perform to the highest standards

If the product does not perform as described on this datasheet, we will offer a refund or replacement. For full details of the Abpromise, please visit <https://www.abcam.cn/abpromise> or contact our technical team.

Terms and conditions

- Guarantee only valid for products bought direct from Abcam or one of our authorized distributors