


### Anti-PPP2R5D antibody ab72303

★★★★★ [1 Abreviews](#) [2 图像](#)

#### 概述

产品名称	Anti-PPP2R5D抗体
描述	兔多克隆抗体to PPP2R5D
宿主	Rabbit
经测试应用	适用于: WB, IP
种属反应性	与反应: Human 预测可用于: Horse, Guinea pig, Cow, Dog, Pig, Chimpanzee, Rhesus monkey, Opossum, Orangutan, Elephant 
免疫原	Synthetic peptide corresponding to a region between residues 1 and 50 of human PPP2R5D (NP_006236.1).
阳性对照	Whole cell lysate from HeLa cells.
常规说明	<p>The Life Science industry has been in the grips of a reproducibility crisis for a number of years. Abcam is leading the way in addressing this with our range of recombinant monoclonal antibodies and knockout edited cell lines for gold-standard validation. Please check that this product meets your needs before purchasing.</p> <p>If you have any questions, special requirements or concerns, please send us an inquiry and/or contact our Support team ahead of purchase. Recommended alternatives for this product can be found below, along with publications, customer reviews and Q&amp;As</p>

#### 性能

形式	Liquid
存放说明	Shipped at 4°C. Upon delivery aliquot and store at -20°C. Avoid freeze / thaw cycles.
存储溶液	<p>pH: 6.8</p> <p>Preservative: 0.09% Sodium azide</p> <p>Constituents: 0.1% BSA, Tris buffered saline</p>
纯度	Immunogen affinity purified
克隆	多克隆
同种型	IgG

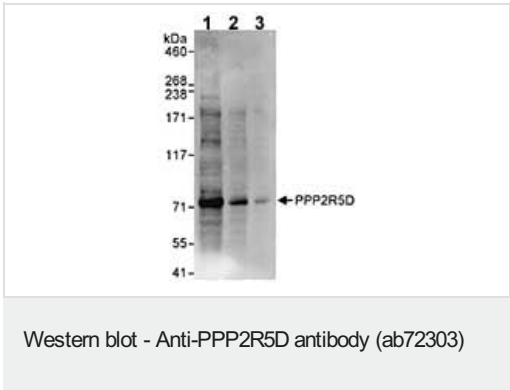
#### 应用

<div> <div>The Abpromise guarantee</div> <div>Abpromise™承诺保证使用ab72303于以下的经测试应用</div> </div> <div>“应用说明”部分 下显示的仅为推荐的起始稀释度;实际最佳的稀释度/浓度应由使用者检定。</div>		
应用	Ab评论	说明
WB	★★★★★ (1)	1/2000 - 1/10000. Detects a band of approximately 74 kDa (predicted molecular weight: 67 kDa).
IP		Use at 2-5 µg/mg of lysate.

靶标

功能	The B regulatory subunit might modulate substrate selectivity and catalytic activity, and also might direct the localization of the catalytic enzyme to a particular subcellular compartment.
组织特异性	Isoform Delta-2 is widely expressed. Isoform Delta-1 is highly expressed in brain.
序列相似性	Belongs to the phosphatase 2A regulatory subunit B56 family.
细胞定位	Cytoplasm. Nucleus. Nuclear in interphase, nuclear during mitosis.

图片



All lanes : Anti-PPP2R5D antibody (ab72303) at 0.04 µg/ml

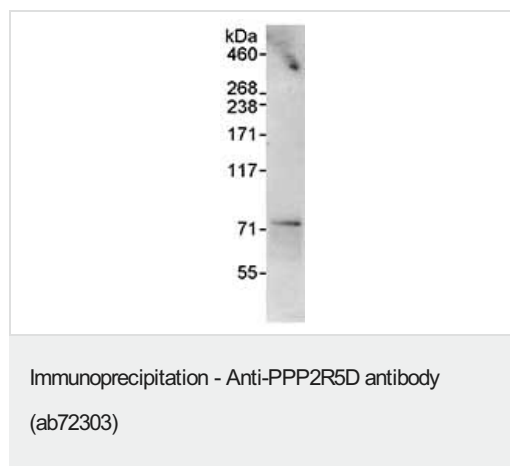
- Lane 1 : Whole cell lysate from HeLa cells at 50 µg
- Lane 2 : Whole cell lysate from HeLa cells at 15 µg
- Lane 3 : Whole cell lysate from HeLa cells at 5 µg

Developed using the ECL technique.

Predicted band size: 67 kDa

Observed band size: 74 kDa

Exposure time: 10 seconds



Detection of Human PPP2R5D by Immunoprecipitation in whole cell lysate from HeLa cells (1 mg for IP, 20% of IP loaded), using ab72303 at 3 µg/mg lysate for IP and at 0.1 µg/ml for subsequent Western blot detection.

Detection: Chemiluminescence with an exposure time of 10 seconds. seconds

**Please note:** All products are "FOR RESEARCH USE ONLY. NOT FOR USE IN DIAGNOSTIC PROCEDURES"

### Our Abpromise to you: Quality guaranteed and expert technical support

---

- Replacement or refund for products not performing as stated on the datasheet
- Valid for 12 months from date of delivery
- Response to your inquiry within 24 hours
- We provide support in Chinese, English, French, German, Japanese and Spanish
- Extensive multi-media technical resources to help you
- We investigate all quality concerns to ensure our products perform to the highest standards

If the product does not perform as described on this datasheet, we will offer a refund or replacement. For full details of the Abpromise, please visit <https://www.abcam.cn/abpromise> or contact our technical team.

### Terms and conditions

---

- Guarantee only valid for products bought direct from Abcam or one of our authorized distributors