


# Anti-PPP2CB antibody ab72343

[1 References](#) [2 图像](#)

### 概述

产品名称	Anti-PPP2CB抗体
描述	兔多克隆抗体to PPP2CB
宿主	Rabbit
经测试应用	适用于: WB, IP
种属反应性	与反应: Mouse, Human 预测可用于: Rat, Rabbit, Chicken, Guinea pig, Cow, Dog, Turkey, Pig, Xenopus laevis, Chimpanzee, Drosophila melanogaster, Zebrafish, Rhesus monkey, Gorilla, Orangutan, Xenopus tropicalis 
免疫原	Synthetic peptide corresponding to Human PPP2CB. Synthetic peptide from a region between residue 260 and the C-terminus (residue 309) of human PPP2CB
阳性对照	Whole cell lysate from Hela, NIH3T3 and 293T cells.
常规说明	<p>The Life Science industry has been in the grips of a reproducibility crisis for a number of years. Abcam is leading the way in addressing this with our range of recombinant monoclonal antibodies and knockout edited cell lines for gold-standard validation. Please check that this product meets your needs before purchasing.</p> <p>If you have any questions, special requirements or concerns, please send us an inquiry and/or contact our Support team ahead of purchase. Recommended alternatives for this product can be found below, along with publications, customer reviews and Q&amp;As</p>

### 性能

形式	Liquid
存放说明	Shipped at 4°C. Upon delivery aliquot and store at -20°C. Avoid freeze / thaw cycles.
存储溶液	pH: 7 Preservative: 0.09% Sodium azide Constituents: 1.815% Tris, 1.764% Sodium citrate, 0.021% PBS
纯度	Immunogen affinity purified
克隆	多克隆
同种型	IgG

应用

The Abpromise guarantee      **Abpromise™**承诺保证使用ab72343于以下的经测试应用

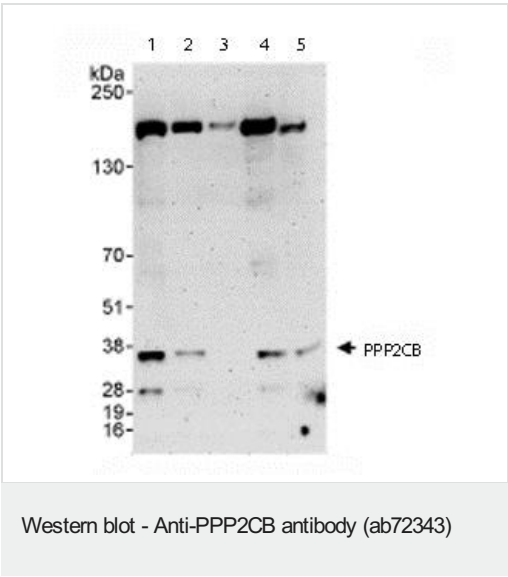
“应用说明”部分 下显示的仅为推荐的起始稀释度;实际最佳的稀释度/浓度应由使用者检定。

应用	Ab评论	说明
WB		1/2000 - 1/10000. Detects a band of approximately 28, 36, 190 kDa (predicted molecular weight: 36 kDa).
IP		Use at 2-5 µg/mg of lysate.

靶标

功能	PP2A can modulate the activity of phosphorylase B kinase casein kinase 2, mitogen-stimulated S6 kinase, and MAP-2 kinase.
序列相似性	Belongs to the PPP phosphatase family. PP-1 subfamily.
翻译后修饰	Reversibly methyl esterified on Leu-309. Carboxyl methylation may play a role in holoenzyme assembly. It varies during the cell cycle. Demethylated by PME 1 (in vitro). Phosphorylation of either threonine (by autophosphorylation-activated protein kinase) or tyrosine results in inactivation of the phosphatase. Auto-dephosphorylation has been suggested as a mechanism for reactivation.
细胞定位	Cytoplasm. Nucleus. Chromosome > centromere. Cytoplasm > cytoskeleton > spindle pole. In prometaphase cells, but not in anaphase cells, localizes at centromeres. During mitosis, also found at spindle poles.

图片



**All lanes :** Anti-PPP2CB antibody (ab72343) at 0.1 µg/ml

**Lane 1 :** Whole cell lysate from Hela cells at 50 µg

**Lane 2 :** Whole cell lysate from Hela cells at 15 µg

**Lane 3 :** Whole cell lysate from Hela cells at 5 µg

**Lane 4 :** Whole cell lysate from 293T cells at 50 µg

**Lane 5 :** Whole cell lysate from NIH3T3 cells at 50 µg

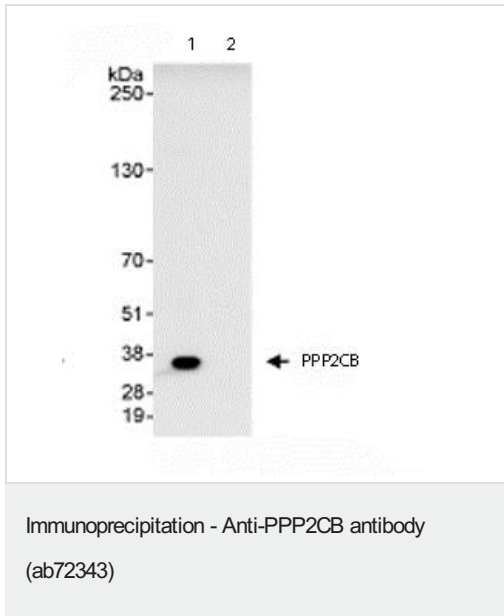
Developed using the ECL technique.

**Predicted band size:** 36 kDa

**Observed band size:** 36 kDa

**Additional bands at:** 190 kDa, 28 kDa. We are unsure as to the identity of these extra bands.

**Exposure time:** 3 minutes



Immunoprecipitation/ Western Blot of PPP2CB.

Lane 1: ab72343 at 3µg/mg whole cell lysate.

Lane 2: Control IgG.

ab72343 at 1µg/ml for WB.

Whole cell lysate from Hela cells at 1mg for IP, 20% of IP loaded.

Chemiluminescence with an exposure time of 30 seconds.

**Please note:** All products are "FOR RESEARCH USE ONLY. NOT FOR USE IN DIAGNOSTIC PROCEDURES"

### Our Abpromise to you: Quality guaranteed and expert technical support

- Replacement or refund for products not performing as stated on the datasheet
- Valid for 12 months from date of delivery
- Response to your inquiry within 24 hours
- We provide support in Chinese, English, French, German, Japanese and Spanish
- Extensive multi-media technical resources to help you
- We investigate all quality concerns to ensure our products perform to the highest standards

If the product does not perform as described on this datasheet, we will offer a refund or replacement. For full details of the Abpromise, please visit <https://www.abcam.cn/abpromise> or contact our technical team.

### Terms and conditions

- Guarantee only valid for products bought direct from Abcam or one of our authorized distributors