

Anti-PPM1B antibody ab70804

★★★★★ [1 Abreviews](#) [4 References](#) [2 图像](#)

概述

产品名称	Anti-PPM1B抗体
描述	兔多克隆抗体to PPM1B
宿主	Rabbit
经测试应用	适用于: WB, IP
种属反应性	与反应: Human
免疫原	Synthetic peptide within Human PPM1B aa 450 to the C-terminus. The exact immunogen sequence used to generate this antibody is proprietary information. If additional detail on the immunogen is needed to determine the suitability of the antibody for your needs, please contact our Scientific Support team to discuss your requirements. Database link: O75688
阳性对照	Whole cell lysate from HeLa, 293T and Jurkat cells.
常规说明	<p>The Life Science industry has been in the grips of a reproducibility crisis for a number of years. Abcam is leading the way in addressing this with our range of recombinant monoclonal antibodies and knockout edited cell lines for gold-standard validation. Please check that this product meets your needs before purchasing.</p> <p>If you have any questions, special requirements or concerns, please send us an inquiry and/or contact our Support team ahead of purchase. Recommended alternatives for this product can be found below, along with publications, customer reviews and Q&As</p>

性能

形式	Liquid
存放说明	Shipped at 4°C. Upon delivery aliquot and store at -20°C. Avoid freeze / thaw cycles.
存储溶液	pH: 6.8 Preservative: 0.09% Sodium azide Constituents: 0.1% BSA, Tris buffered saline
纯度	Immunogen affinity purified
克隆	多克隆
同种型	IgG

应用

The Abpromise guarantee

Abpromise™ 承诺保证使用 ab70804 于以下的经测试应用

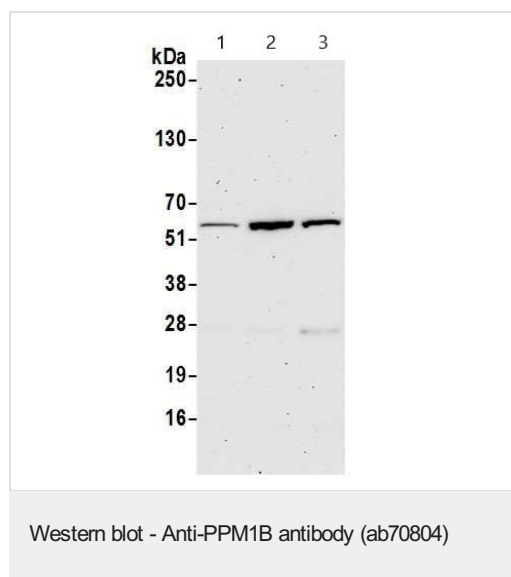
“应用说明”部分 下显示的仅为推荐的起始稀释度;实际最佳的稀释度/浓度应由使用者检定。

应用	Ab评论	说明
WB	★★★★★ (1)	1/2000 - 1/10000. Detects a band of approximately 53 kDa (predicted molecular weight: 53 kDa).
IP		Use at 2-5 µg/mg of lysate.

靶标

功能	Enzyme with a broad specificity. Dephosphorylates CDK2 and CDK6 in vitro.
组织特异性	Highly expressed in heart and skeletal muscle.
序列相似性	Belongs to the PP2C family.

图片



All lanes : Anti-PPM1B antibody (ab70804) at 0.04 µg/ml

Lane 1 : Jurkat (human T cell leukemia cell line from peripheral blood) whole cell lysate

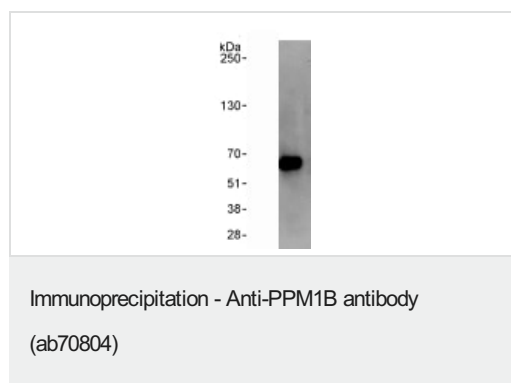
Lane 2 : A549 (human lung carcinoma cell line) whole cell lysate

Lane 3 : HEK-293T (human epithelial cell line from embryonic kidney transformed with large T antigen) whole cell lysate

Lysates/proteins at 50 µg per lane.

Predicted band size: 53 kDa

Exposure time: 75 seconds



Detection of PPM1B by Western Blot of Immunoprecipitate.

1mg whole cell lysate from HeLa cells was immunoprecipitated using ab70804 at 3µg/mg of lysate. for the subsequent western blot, 20% of the immunoprecipitate was probed with ab70804 at 1µg/ml. Detection: chemiluminescence with exposure time of 10 seconds.

Please note: All products are "FOR RESEARCH USE ONLY. NOT FOR USE IN DIAGNOSTIC PROCEDURES"

Our Abpromise to you: Quality guaranteed and expert technical support

- Replacement or refund for products not performing as stated on the datasheet
- Valid for 12 months from date of delivery
- Response to your inquiry within 24 hours

- We provide support in Chinese, English, French, German, Japanese and Spanish
- Extensive multi-media technical resources to help you
- We investigate all quality concerns to ensure our products perform to the highest standards

If the product does not perform as described on this datasheet, we will offer a refund or replacement. For full details of the Abpromise, please visit <https://www.abcam.cn/abpromise> or contact our technical team.

Terms and conditions

- Guarantee only valid for products bought direct from Abcam or one of our authorized distributors