

Anti-PPAPDC3 antibody ab106399

2 图像

概述

产品名称	Anti-PPAPDC3抗体
描述	兔多克隆抗体to PPAPDC3
宿主	Rabbit
特异性	At least two isoforms of PPAPDC3 are known to exist; ab106399 will recognize both isoforms. ab106399 will not cross react with other PPAPDC family members.
经测试应用	适用于: ICC/IF, WB
种属反应性	与反应: Mouse
免疫原	A 19 amino acid peptide from near the amino terminus of Human PPAPDC3 (EAW87966).
阳性对照	Mouse heart tissue lysate
常规说明	<p>The Life Science industry has been in the grips of a reproducibility crisis for a number of years. Abcam is leading the way in addressing this with our range of recombinant monoclonal antibodies and knockout edited cell lines for gold-standard validation. Please check that this product meets your needs before purchasing.</p> <p>If you have any questions, special requirements or concerns, please send us an inquiry and/or contact our Support team ahead of purchase. Recommended alternatives for this product can be found below, along with publications, customer reviews and Q&As</p>

性能

形式	Liquid
存放说明	Shipped at 4°C. Store at 4°C (stable for up to 12 months).
存储溶液	pH: 7.2 Preservative: 0.02% Sodium azide Constituent: PBS
纯度	Immunogen affinity purified
克隆	多克隆
同种型	IgG

应用

The Abpromise guarantee**Abpromise™**承诺保证使用ab106399于以下的经测试应用

“应用说明”部分 下显示的仅为推荐的起始稀释度;实际最佳的稀释度/浓度应由使用者检定。

应用	Ab评论	说明
ICC/IF		Use a concentration of 20 µg/ml.
WB		Use a concentration of 1 - 2 µg/ml. Predicted molecular weight: 29 kDa.

靶标**功能**

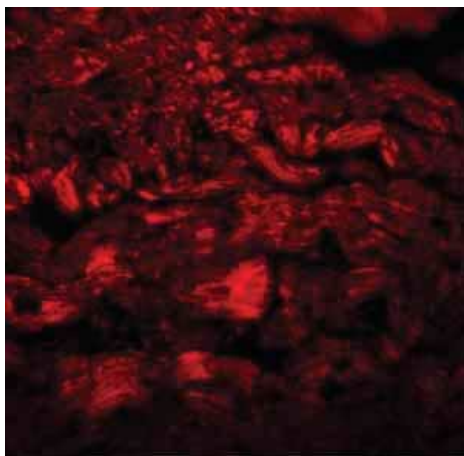
Plays a role as negative regulator of myoblast differentiation, in part through effects on MTOR signaling. Has no detectable enzymatic activity.

序列相似性

Belongs to the PA-phosphatase related phosphoesterase family.

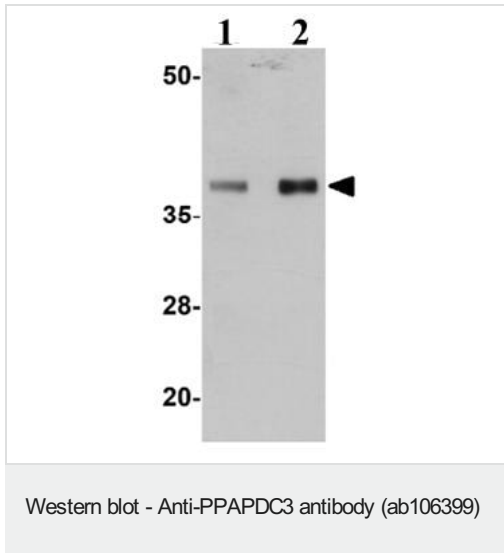
细胞定位

Nucleus envelope. Endoplasmic reticulum membrane. Membrane. Both the N-and C-terminal are exposed to the cytoplasm/nucleoplasm.

图片

Immunofluorescence of PPAPDC3 in mouse heart tissue with ab106399 at 20 ug/mL.

Immunocytochemistry/ Immunofluorescence - Anti-PPAPDC3 antibody (ab106399)



Lane 1 : Anti-PPAPDC3 antibody (ab106399) at 1 µg/ml

Lane 2 : Anti-PPAPDC3 antibody (ab106399) at 2 µg/ml

All lanes : Mouse heart tissue lysate

Lysates/proteins at 15 µg per lane.

Predicted band size: 29 kDa

Please note: All products are "FOR RESEARCH USE ONLY. NOT FOR USE IN DIAGNOSTIC PROCEDURES"

Our Abpromise to you: Quality guaranteed and expert technical support

- Replacement or refund for products not performing as stated on the datasheet
- Valid for 12 months from date of delivery
- Response to your inquiry within 24 hours
- We provide support in Chinese, English, French, German, Japanese and Spanish
- Extensive multi-media technical resources to help you
- We investigate all quality concerns to ensure our products perform to the highest standards

If the product does not perform as described on this datasheet, we will offer a refund or replacement. For full details of the Abpromise, please visit <https://www.abcam.cn/abpromise> or contact our technical team.

Terms and conditions

- Guarantee only valid for products bought direct from Abcam or one of our authorized distributors