

Anti-PP2A-alpha antibody ab106262

★★★★★ [3 Abreviews](#) [10 References](#) [2 图像](#)

概述

产品名称	Anti-PP2A-alpha抗体
描述	兔多克隆抗体to PP2A-alpha
宿主	Rabbit
经测试应用	适用于: WB, IHC-P
种属反应性	与反应: Mouse, Rat, Human
免疫原	Synthetic peptide aa 6-20 (N terminal). Sequence: FTKELDQWIEQLNEC

Database link: [P67775](#)

 [Run BLAST with](#)

 [Run BLAST with](#)

常规说明

The Life Science industry has been in the grips of a reproducibility crisis for a number of years. Abcam is leading the way in addressing this with our range of recombinant monoclonal antibodies and knockout edited cell lines for gold-standard validation. Please check that this product meets your needs before purchasing.

If you have any questions, special requirements or concerns, please send us an inquiry and/or contact our Support team ahead of purchase. Recommended alternatives for this product can be found below, along with publications, customer reviews and Q&As

性能

形式	Liquid
存放说明	Shipped at 4°C. Upon delivery aliquot and store at -20°C. Avoid freeze / thaw cycles.
存储溶液	Preservatives: 0.025% Thimerosal (merthiolate), 0.025% Sodium azide Constituents: 2.5% BSA, 0.45% Sodium chloride, 0.1% Dibasic monohydrogen sodium phosphate
纯度	Immunogen affinity purified
克隆	多克隆
同种型	IgG

应用

The Abpromise guarantee **Abpromise™**承诺保证使用ab106262于以下的经测试应用

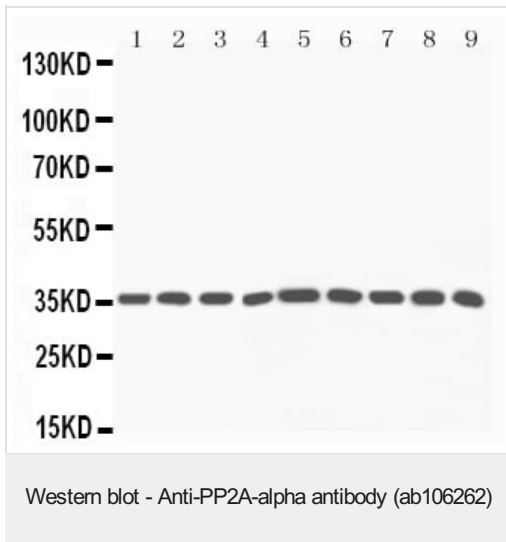
“应用说明”部分 下显示的仅为推荐的起始稀释度;实际最佳的稀释度/浓度应由使用者检定。

应用	Ab评论	说明
WB	★★★★★ (2)	Use a concentration of 1 - 2 µg/ml. Predicted molecular weight: 36 kDa.
IHC-P	★★★★★ (1)	Use a concentration of 1 - 2 µg/ml. Boiling the sections is required.

靶标

功能	PP2A can modulate the activity of phosphorylase B kinase casein kinase 2, mitogen-stimulated S6 kinase, and MAP-2 kinase. Cooperates with SGOL2 to protect centromeric cohesin from separase-mediated cleavage in oocytes specifically during meiosis I (By similarity). Can dephosphorylate SV40 large T antigen and p53/TP53. Dephosphorylates SV40 large T antigen, preferentially on serine residues 120, 123, 677, and perhaps 679. The C subunit was most active, followed by the AC form, which was more active than the ABC form, and activity of all three forms was strongly stimulated by manganese, and to a lesser extent by magnesium. Dephosphorylation by the AC form, but not C or ABC form is inhibited by small T antigen.
序列相似性	Belongs to the PPP phosphatase family. PP-1 subfamily.
翻译后修饰	Reversibly methyl esterified on Leu-309. Carboxyl methylation may play a role in holoenzyme assembly. It varies during the cell cycle. Phosphorylation of either threonine (by autophosphorylation-activated protein kinase) or tyrosine results in inactivation of the phosphatase. Auto-dephosphorylation has been suggested as a mechanism for reactivation.
细胞定位	Cytoplasm. Nucleus. Chromosome > centromere. Cytoplasm > cytoskeleton > spindle pole. In prometaphase cells, but not in anaphase cells, localizes at centromeres. During mitosis, also found at spindle poles. Centromeric localization requires the presence of SGOL2.

图片

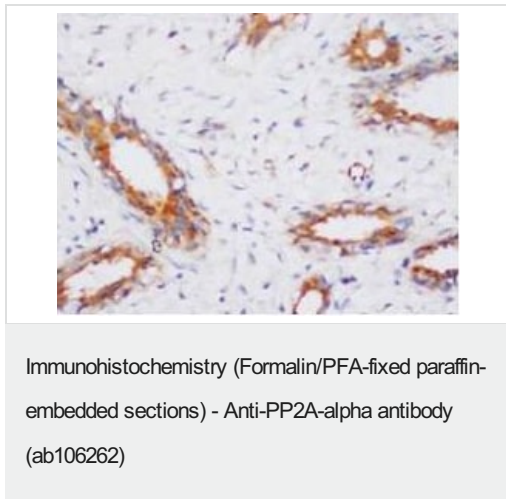


All lanes : Anti-PP2A-alpha antibody (ab106262) at 0.5 µg/ml

- Lane 1 :** Rat kidney tissue Lysate
- Lane 2 :** Rat Liver tissue Lysate
- Lane 3 :** Human Placenta tissue Lysate
- Lane 4 :** Mouse Kidney tissue Lysate
- Lane 5 :** A431 Whole Cell Lysate
- Lane 6 :** HeLa Whole Cell Lysate
- Lane 7 :** 293T Whole Cell Lysate
- Lane 8 :** NIH Whole Cell Lysate
- Lane 9 :** PC12 Whole Cell Lysate

Lysates/proteins at 40 µg per lane.

Predicted band size: 36 kDa



Cytoplasmic staining of PP2A in a formalin fixed, paraffin embedded section of human mammary cancer, using ab106262 at a concentration of 2µg/ml.

Please note: All products are "FOR RESEARCH USE ONLY. NOT FOR USE IN DIAGNOSTIC PROCEDURES"

Our Abpromise to you: Quality guaranteed and expert technical support

- Replacement or refund for products not performing as stated on the datasheet
- Valid for 12 months from date of delivery
- Response to your inquiry within 24 hours
- We provide support in Chinese, English, French, German, Japanese and Spanish
- Extensive multi-media technical resources to help you
- We investigate all quality concerns to ensure our products perform to the highest standards

If the product does not perform as described on this datasheet, we will offer a refund or replacement. For full details of the Abpromise, please visit <https://www.abcam.cn/abpromise> or contact our technical team.

Terms and conditions

- Guarantee only valid for products bought direct from Abcam or one of our authorized distributors