


Anti-PP2A alpha + beta antibody [Y119] ab32141

重组 RabMAb

★★★★☆ **5 Abreviews** **31 References** **4 图像**

概述

产品名称	Anti-PP2A alpha + beta抗体[Y119]
描述	兔单克隆抗体[Y119] to PP2A alpha + beta
宿主	Rabbit
特异性	This antibody detects both alpha and beta isoforms of PP2A.
经测试应用	适用于: WB, IHC-P, Flow Cyt (Intra)
种属反应性	与反应: Human 预测可用于: Mouse, Rat 
免疫原	Synthetic peptide. This information is proprietary to Abcam and/or its suppliers.
表位	ab32141 reacts with an epitope located in the C terminal region of PP2A alpha and beta
阳性对照	T47-D cell lysate and human breast carcinoma
常规说明	This product is a recombinant monoclonal antibody, which offers several advantages including: <ul style="list-style-type: none"> - High batch-to-batch consistency and reproducibility - Improved sensitivity and specificity - Long-term security of supply - Animal-free production For more information see here . Our RabMAb [®] technology is a patented hybridoma-based technology for making rabbit monoclonal antibodies. For details on our patents, please refer to RabMAb[®] patents .

性能

形式	Liquid
存放说明	Shipped at 4°C. Store at +4°C short term (1-2 weeks). Upon delivery aliquot. Store at -20°C. Avoid freeze / thaw cycle.
存储溶液	pH: 7.20 Preservative: 0.01% Sodium azide Constituents: 49% PBS, 50% Glycerol (glycerin, glycerine), 0.05% BSA
纯度	Protein A purified
克隆	单克隆

克隆编号	Y119
同种型	IgG

应用

The Abpromise guarantee **Abpromise™**承诺保证使用ab32141于以下的经测试应用

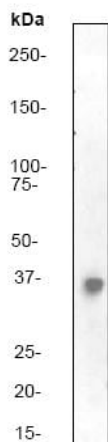
“应用说明”部分 下显示的仅为推荐的起始稀释度;实际最佳的稀释度/浓度应由使用者检定。

应用	Ab评论	说明
WB	★★★★★ (3)	1/5000 - 1/10000. Detects a band of approximately 36 kDa (predicted molecular weight: 35 kDa).
IHC-P		1/250 - 1/500. Perform heat mediated antigen retrieval with citrate buffer pH 6 before commencing with IHC staining protocol.
Flow Cyt (Intra)		1/20.

靶标

功能	<p>PP2A can modulate the activity of phosphorylase B kinase casein kinase 2, mitogen-stimulated S6 kinase, and MAP-2 kinase. Cooperates with SGOL2 to protect centromeric cohesin from separase-mediated cleavage in oocytes specifically during meiosis I (By similarity). Can dephosphorylate SV40 large T antigen and p53/TP53. Dephosphorylates SV40 large T antigen, preferentially on serine residues 120, 123, 677, and perhaps 679. The C subunit was most active, followed by the AC form, which was more active than the ABC form, and activity of all three forms was strongly stimulated by manganese, and to a lesser extent by magnesium. Dephosphorylation by the AC form, but not C or ABC form is inhibited by small T antigen. Activates RAF1 by dephosphorylating it at 'Ser-259'.</p>
序列相似性	<p>Belongs to the PPP phosphatase family. PP-1 subfamily.</p>
翻译后修饰	<p>Reversibly methyl esterified on Leu-309. Carboxyl methylation may play a role in holoenzyme assembly, enhancing the affinity of the PP2A core enzyme for some, but not all, regulatory subunits. It varies during the cell cycle.</p> <p>Phosphorylation of either threonine (by autophosphorylation-activated protein kinase) or tyrosine results in inactivation of the phosphatase. Auto-dephosphorylation has been suggested as a mechanism for reactivation.</p>
细胞定位	<p>Cytoplasm. Nucleus. Chromosome > centromere. Cytoplasm > cytoskeleton > spindle pole. In prometaphase cells, but not in anaphase cells, localizes at centromeres. During mitosis, also found at spindle poles. Centromeric localization requires the presence of SGOL2.</p>

图片

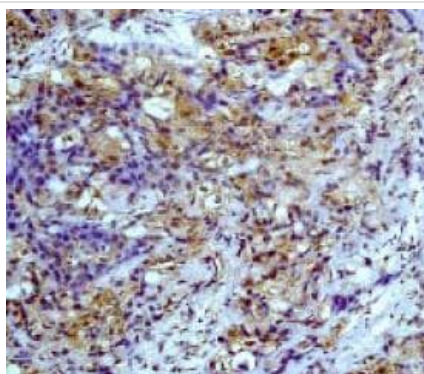


Western blot - Anti-PP2A alpha + beta antibody [Y119] (ab32141)

Anti-PP2A alpha + beta antibody [Y119] (ab32141) at 1/10000 dilution + T47-D cell lysate

Predicted band size: 35 kDa

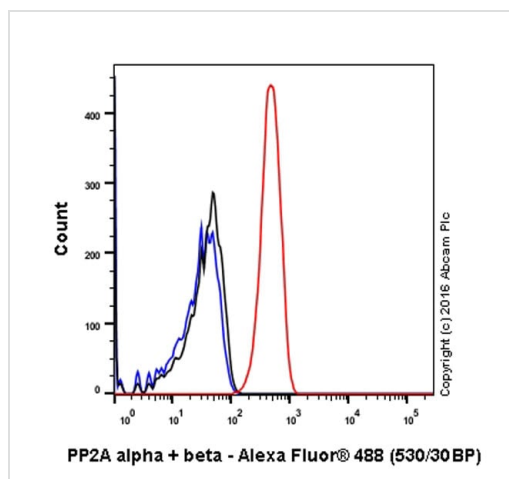
Observed band size: 36 kDa



Immunohistochemistry (Formalin/PFA-fixed paraffin-embedded sections) - Anti-PP2A alpha + beta antibody [Y119] (ab32141)

ab32141, at a 1/250 dilution, staining human breast carcinoma by immunohistochemistry, Paraffin embedded tissue





Perform heat mediated antigen retrieval with citrate buffer pH 6 before commencing with IHC staining protocol.



Intracellular Flow Cytometry analysis of HeLa (human cervix adenocarcinoma) cells labelling PP2A alpha + beta (red) with unpurified ab32141 at dilution of 1/20. Goat anti rabbit IgG (Alexa Fluor®488) at 1/2000 was used as the secondary antibody. Cells were fixed with 4% paraformaldehyde and permeabilised with 90% methanol. Isotype control antibody was Rabbit monoclonal IgG (black). The blue line shows cells without incubation with primary and secondary antibodies.

Flow Cytometry (Intracellular) - Anti-PP2A alpha + beta antibody [Y119] (ab32141)

Why choose a recombinant antibody?

 <p>Research with confidence Consistent and reproducible results</p>	 <p>Long-term and scalable supply Recombinant technology</p>
 <p>Success from the first experiment Confirmed specificity</p>	 <p>Ethical standards compliant Animal-free production</p>

Anti-PP2A alpha + beta antibody [Y119] (ab32141)

Please note: All products are "FOR RESEARCH USE ONLY. NOT FOR USE IN DIAGNOSTIC PROCEDURES"

Our Abpromise to you: Quality guaranteed and expert technical support

- Replacement or refund for products not performing as stated on the datasheet
- Valid for 12 months from date of delivery
- Response to your inquiry within 24 hours
- We provide support in Chinese, English, French, German, Japanese and Spanish
- Extensive multi-media technical resources to help you
- We investigate all quality concerns to ensure our products perform to the highest standards

If the product does not perform as described on this datasheet, we will offer a refund or replacement. For full details of the Abpromise, please visit <https://www.abcam.cn/abpromise> or contact our technical team.

Terms and conditions

- Guarantee only valid for products bought direct from Abcam or one of our authorized distributors