

### Anti-PON1 antibody [EPR2892] ab92466

**重组** RabMAb

**4 References**   **10 图像**

#### 概述

产品名称	Anti-PON1抗体[EPR2892]
描述	兔单克隆抗体[EPR2892] to PON1
宿主	Rabbit
特异性	Mouse species is recommended based on IHC results, we do not guarantee WB for mouse.
经测试应用	<b>适用于:</b> WB, IHC-P <b>不适用于:</b> ICC/IF
种属反应性	<b>与反应:</b> Mouse, Human
免疫原	Synthetic peptide within Human PON1 aa 50-150 (N terminal). The exact sequence is proprietary.
阳性对照	WB: Human plasma cell lysate and ovary carcinoma tissue lysate; IHC-P: Human liver tissue. Mouse liver, kidney, and colon tissues.
常规说明	<p>This product is a recombinant monoclonal antibody, which offers several advantages including:</p> <ul style="list-style-type: none"> <li>- High batch-to-batch consistency and reproducibility</li> <li>- Improved sensitivity and specificity</li> <li>- Long-term security of supply</li> <li>- Animal-free production</li> </ul> <p>For more information <a href="#">see here</a>.</p> <p>Our RabMAb<sup>®</sup> technology is a patented hybridoma-based technology for making rabbit monoclonal antibodies. For details on our patents, please refer to <a href="#">RabMAb<sup>®</sup> patents</a>.</p> <p>Mouse, Rat: We have preliminary internal testing data to indicate this antibody may not react with these species. Please contact us for more information.</p>

#### 性能

形式	Liquid
存放说明	Shipped at 4°C. Store at -20°C. Stable for 12 months at -20°C.
存储溶液	pH: 7.20 Preservative: 0.01% Sodium azide Constituents: 9% PBS, 40% Glycerol (glycerin, glycerine), 0.05% BSA, 50% Tissue culture supernatant

纯度	Tissue culture supernatant
克隆	单克隆
克隆编号	EPR2892
同种型	IgG

## 应用

**The Abpromise guarantee**      **Abpromise™承诺保证使用ab92466于以下的经测试应用**

“应用说明”部分下显示的仅为推荐的起始稀释度;实际最佳的稀释度/浓度应由使用者检定。

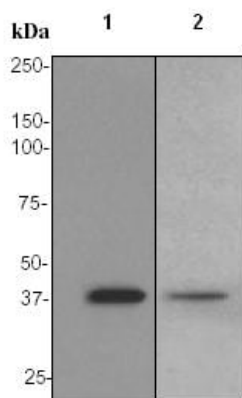
应用	Ab评论	说明
WB		1/1000 - 1/10000. Predicted molecular weight: 40 kDa.
IHC-P		1/100 - 1/250. Perform heat mediated antigen retrieval before commencing with IHC staining protocol.

应用说明 Is unsuitable for ICC/IE.

靶标

功能	Hydrolyzes the toxic metabolites of a variety of organophosphorus insecticides. Capable of hydrolyzing a broad spectrum of organophosphate substrates and lactones, and a number of aromatic carboxylic acid esters. Mediates an enzymatic protection of low density lipoproteins against oxidative modification and the consequent series of events leading to atheroma formation.
组织特异性	Plasma, associated with HDL (at protein level). Expressed in liver, but not in heart, brain, placenta, lung, skeletal muscle, kidney or pancreas.
疾病相关	Genetic variation in PON1 is associated with susceptibility to microvascular complications of diabetes type 5 (MVCD5) [MIM:612633]. These are pathological conditions that develop in numerous tissues and organs as a consequence of diabetes mellitus. They include diabetic retinopathy, diabetic nephropathy leading to end-stage renal disease, and diabetic neuropathy. Diabetic retinopathy remains the major cause of new-onset blindness among diabetic adults. It is characterized by vascular permeability and increased tissue ischemia and angiogenesis. Note=Homozygosity for the Leu-54 allele is strongly associated with the development of retinal disease in diabetic patients.
序列相似性	Belongs to the paraoxonase family.
翻译后修饰	Glycosylated. The signal sequence is not cleaved. Present in two forms, form B contains a disulfide bond, form A does not.
细胞定位	Secreted > extracellular space.

图片



Western blot - Anti-PON1 antibody [EPR2892]  
(ab92466)

**All lanes :** Anti-PON1 antibody [EPR2892] (ab92466) at 1/1000 dilution

**Lane 1 :** Human plasma cell lysate

**Lane 2 :** ovarian cancer lysate

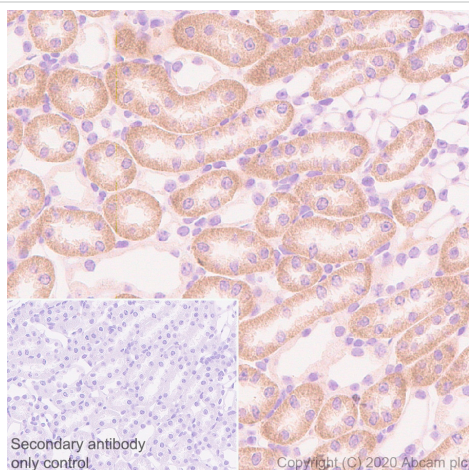
Lysates/proteins at 10 µg per lane.

#### Secondary

**Lane 1 :** HRP labelled Goat anti-Rabbit IgG at 1/2000 dilution

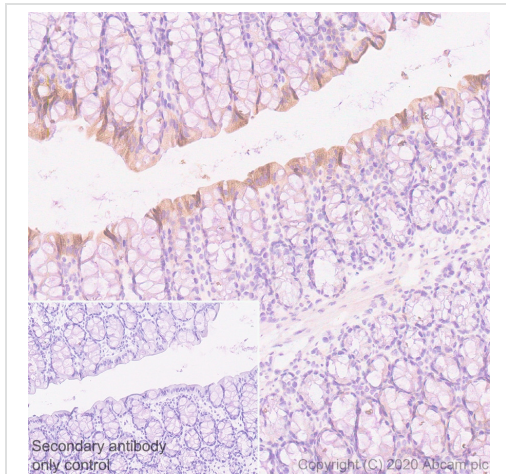
**Lane 2 :** HRP labelled goat anti-rabbit IgG at 1/2000 dilution

**Predicted band size:** 40 kDa



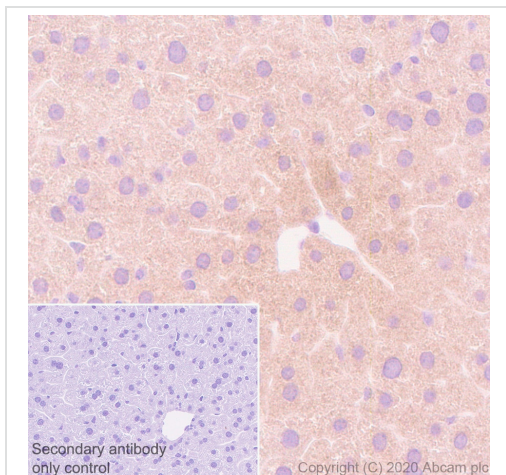
Immunohistochemistry (Formalin/PFA-fixed paraffin-embedded sections) - Anti-PON1 antibody [EPR2892] (ab92466)

Immunohistochemistry (Formalin/PFA-fixed paraffin-embedded sections) analysis of Mouse kidney tissue labelling PON1 with ab92466 at 1/100 dilution. Heat mediated antigen retrieval was performed using Tris/EDTA buffer pH 9 for 20 min. The section was incubated with ab92466 for 30 mins at room temperature. Cytoplasmic localization of PON1 visualized using Rabbit specific IHC polymer detection kit HRP/DAB (**ab209101**). Counterstained with hematoxylin. The immunostaining was performed on a Leica Biosystems BOND® RX instrument.



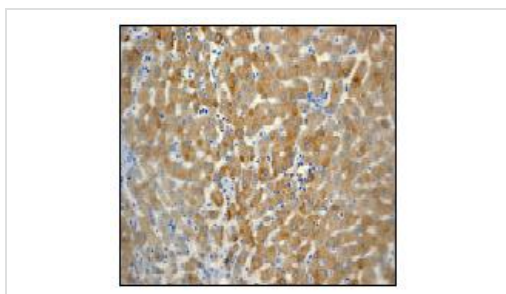
Immunohistochemistry (Formalin/PFA-fixed paraffin-embedded sections) - Anti-PON1 antibody  
[EPR2892] (ab92466)

Immunohistochemistry (Formalin/PFA-fixed paraffin-embedded sections) analysis of Mouse colon tissue labelling PON1 with ab92466 at 1/100 dilution. Heat mediated antigen retrieval was performed using Tris/EDTA buffer pH 9 for 20 min. The section was incubated with ab92466 for 30 mins at room temperature. Cytoplasmic localization of PON1 visualized using Rabbit specific IHC polymer detection kit HRP/DAB (**ab209101**). Counterstained with hematoxylin. The immunostaining was performed on a Leica Biosystems BOND® RX instrument.



Immunohistochemistry (Formalin/PFA-fixed paraffin-embedded sections) - Anti-PON1 antibody  
[EPR2892] (ab92466)

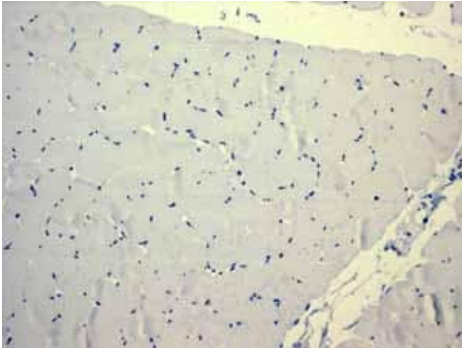
Immunohistochemistry (Formalin/PFA-fixed paraffin-embedded sections) analysis of Mouse liver tissue labelling PON1 with ab92466 at 1/100 dilution. Heat mediated antigen retrieval was performed using Tris/EDTA buffer pH 9 for 20 min. The section was incubated with ab92466 for 30 mins at room temperature. Cytoplasmic localization of PON1 visualized using Rabbit specific IHC polymer detection kit HRP/DAB (**ab209101**). Counterstained with hematoxylin. The immunostaining was performed on a Leica Biosystems BOND® RX instrument.



Immunohistochemistry (Formalin/PFA-fixed paraffin-embedded sections) - Anti-PON1 antibody  
[EPR2892] (ab92466)

ab92466, at 1/100 dilution, staining PON1 in formalin-fixed, paraffin-embedded Human liver tissue.

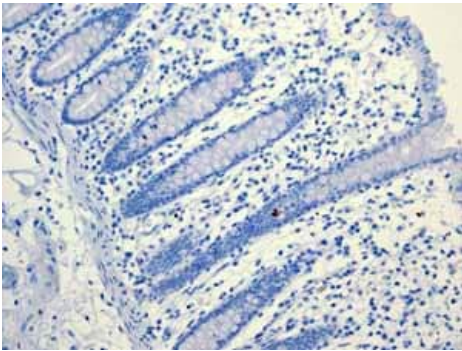
Heat mediated antigen retrieval was performed before commencing with IHC staining protocol.



Immunohistochemistry (Formalin/PFA-fixed paraffin-embedded sections) - Anti-PON1 antibody  
[EPR2892] (ab92466)

ab92466 showing negative staining in Skeletal muscle tissue.

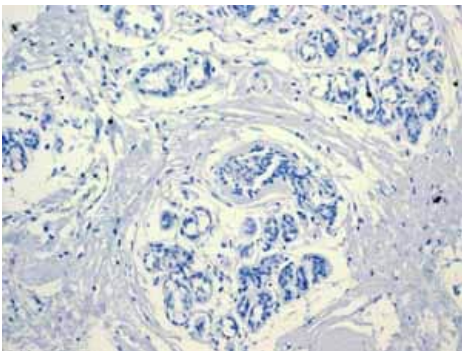
Heat mediated antigen retrieval was performed before commencing with IHC staining protocol.



Immunohistochemistry (Formalin/PFA-fixed paraffin-embedded sections) - Anti-PON1 antibody  
[EPR2892] (ab92466)

ab92466 showing negative staining in Normal colon tissue.

Heat mediated antigen retrieval was performed before commencing with IHC staining protocol.

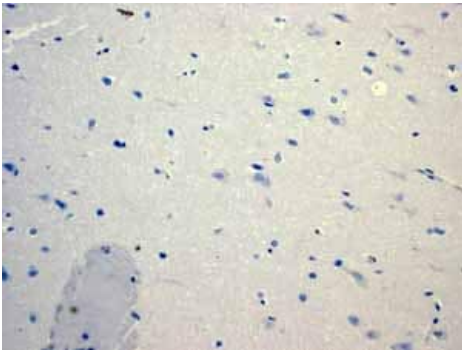


Immunohistochemistry (Formalin/PFA-fixed paraffin-embedded sections) - Anti-PON1 antibody  
[EPR2892] (ab92466)

ab92466 showing negative staining in Normal breast tissue.

Heat mediated antigen retrieval was performed before commencing with IHC staining protocol.





ab92466 showing negative staining in Normal brain tissue.

Heat mediated antigen retrieval was performed before commencing with IHC staining protocol.

Immunohistochemistry (Formalin/PFA-fixed paraffin-embedded sections) - Anti-PON1 antibody [EPR2892] (ab92466)

#### Why choose a recombinant antibody?



Anti-PON1 antibody [EPR2892] (ab92466)

**Please note:** All products are "FOR RESEARCH USE ONLY. NOT FOR USE IN DIAGNOSTIC PROCEDURES"

#### Our Abpromise to you: Quality guaranteed and expert technical support

- Replacement or refund for products not performing as stated on the datasheet
- Valid for 12 months from date of delivery
- Response to your inquiry within 24 hours
- We provide support in Chinese, English, French, German, Japanese and Spanish
- Extensive multi-media technical resources to help you
- We investigate all quality concerns to ensure our products perform to the highest standards

If the product does not perform as described on this datasheet, we will offer a refund or replacement. For full details of the Abpromise, please visit <https://www.abcam.cn/abpromise> or contact our technical team.

## Terms and conditions

---

- Guarantee only valid for products bought direct from Abcam or one of our authorized distributors