

Anti-POMC antibody [EPR17571] - BSA and Azide free ab222486

重组 RabMAb

9 图像

概述

产品名称	Anti-POMC抗体[EPR17571] - BSA and Azide free
描述	兔单克隆抗体[EPR17571] to POMC - BSA and Azide free
宿主	Rabbit
经测试应用	适用于: IHC-P, IP, WB
种属反应性	与反应: Mouse, Rat, Human, Recombinant fragment
免疫原	Synthetic peptide. This information is proprietary to Abcam and/or its suppliers.
阳性对照	WB: HEK-293T transfected with POMC whole cell lysate; rat and mouse pituitary lysates; human ACTH recombinant protein. IHC-P: Human, mouse and rat pituitary tissues. IP: Rat pituitary whole cell lysate.
常规说明	<p>ab222486 is the carrier-free version of ab210605.</p> <p>Our carrier-free antibodies are typically supplied in a PBS-only formulation, purified and free of BSA, sodium azide and glycerol. The carrier-free buffer and high concentration allow for increased conjugation efficiency.</p> <p>This conjugation-ready format is designed for use with fluorochromes, metal isotopes, oligonucleotides, and enzymes, which makes them ideal for antibody labelling, functional and cell-based assays, flow-based assays (e.g. mass cytometry) and Multiplex Imaging applications.</p> <p>Use our conjugation kits for antibody conjugates that are ready-to-use in as little as 20 minutes with <1 minute hands-on-time and 100% antibody recovery: available for fluorescent dyes, HRP, biotin and gold.</p> <p>This product is compatible with the Maxpar[®] Antibody Labeling Kit from Fluidigm, without the need for antibody preparation. Maxpar[®] is a trademark of Fluidigm Canada Inc.</p> <p>Our RabMAb[®] technology is a patented hybridoma-based technology for making rabbit monoclonal antibodies. For details on our patents, please refer to RabMAb[®] patents.</p>

性能

形式 Liquid

存放说明	Shipped at 4°C. Store at +4°C. Do Not Freeze.
存储溶液	pH: 7.2 Constituent: PBS
无载体	是
纯度	Protein A purified
克隆	单克隆
克隆编号	EPR17571
同种型	IgG

应用

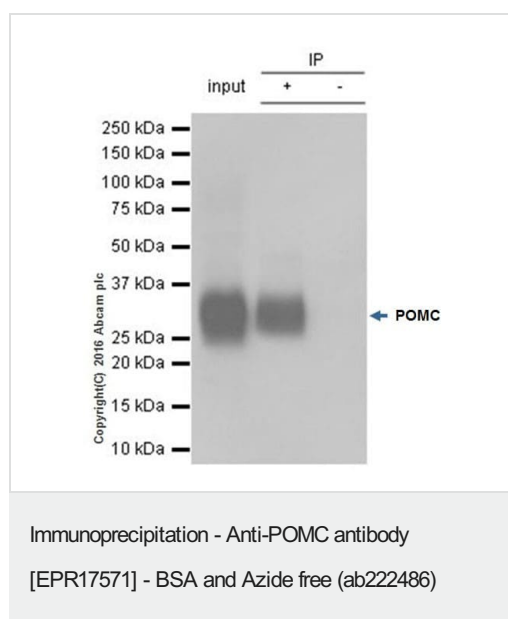
The Abpromise guarantee **Abpromise™** 承诺保证使用 ab222486 于以下的经测试应用

“应用说明”部分 下显示的仅为推荐的起始稀释度;实际最佳的稀释度/浓度应由使用者检定。

应用	Ab评论	说明
IHC-P		Use at an assay dependent concentration. Perform heat mediated antigen retrieval with Tris/EDTA buffer pH 9.0 before commencing with IHC staining protocol.
IP		Use at an assay dependent concentration.
WB		Use at an assay dependent concentration. Detects a band of approximately 29 kDa (predicted molecular weight: 29 kDa).

靶标

图片



ab210605 at 1/80 immunoprecipitating POMC in Rat pituitary whole cell lysate observed at 29 KDa (lanes 1 and 2).

Lane 1 (input): Rat pituitary whole cell lysate 10µg

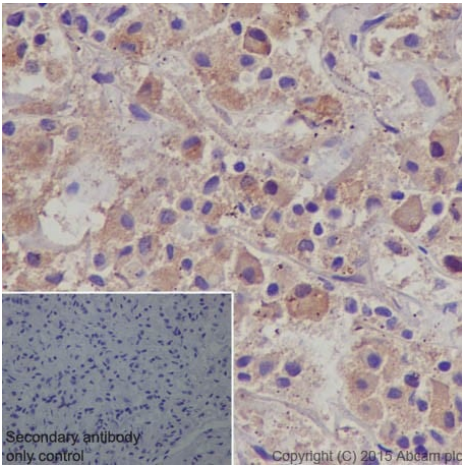
Lane 2 (+): **ab210605** + Rat pituitary whole cell lysate

Lane 3 (-): Rabbit monoclonal IgG (**ab172730**) instead of **ab210605** in Rat pituitary whole cell lysate

For western blotting, **ab210605** at 1/1000 dilution and **ab131366** VeriBlot for IP (HRP) was used for detection at 1/10000 dilution.

Blocking/Diluting buffer and concentration: 5% NFDm/TBST.

This data was developed using the same antibody clone in a different buffer formulation containing PBS, BSA, glycerol, and sodium azide (**ab210605**).



Immunohistochemistry (Formalin/PFA-fixed paraffin-embedded sections) - Anti-POMC antibody [EPR17571] - BSA and Azide free (ab222486)

Immunohistochemical analysis of paraffin-embedded human pituitary tissue labeling POMC with **ab210605** at 1/16000 dilution, followed by Goat Anti-Rabbit IgG H&L (HRP) (**ab97051**) at 1/500 dilution.

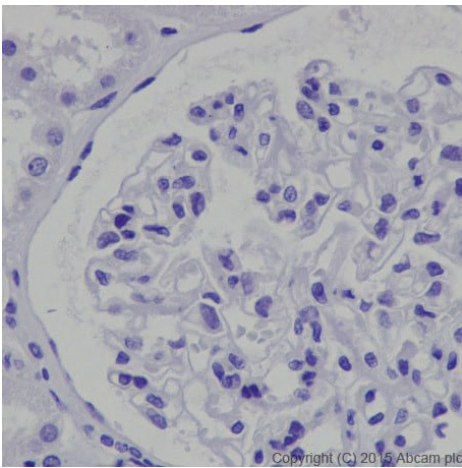
Cytoplasmic staining on human pituitary is observed.

Counter stained with Hematoxylin.

Secondary antibody only control: Used PBS instead of primary antibody, secondary antibody is Goat Anti-Rabbit IgG H&L (HRP) (**ab97051**) at 1/500 dilution.

This data was developed using the same antibody clone in a different buffer formulation containing PBS, BSA, glycerol, and sodium azide (**ab210605**).

Perform heat mediated antigen retrieval with Tris/EDTA buffer pH 9.0 before commencing with IHC staining protocol.



Immunohistochemistry (Formalin/PFA-fixed paraffin-embedded sections) - Anti-POMC antibody [EPR17571] - BSA and Azide free (ab222486)

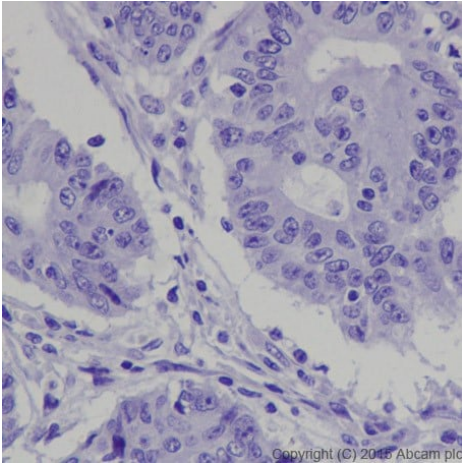
Immunohistochemical analysis of paraffin-embedded human kidney tissue labeling POMC with **ab210605** at 1/16000 dilution, followed by Goat Anti-Rabbit IgG H&L (HRP) (**ab97051**) at 1/500 dilution.

Negative staining on human kidney.

Counter stained with Hematoxylin.

This data was developed using the same antibody clone in a different buffer formulation containing PBS, BSA, glycerol, and sodium azide (**ab210605**).

Perform heat mediated antigen retrieval with Tris/EDTA buffer pH 9.0 before commencing with IHC staining protocol.



Immunohistochemistry (Formalin/PFA-fixed paraffin-embedded sections) - Anti-POMC antibody [EPR17571] - BSA and Azide free (ab222486)

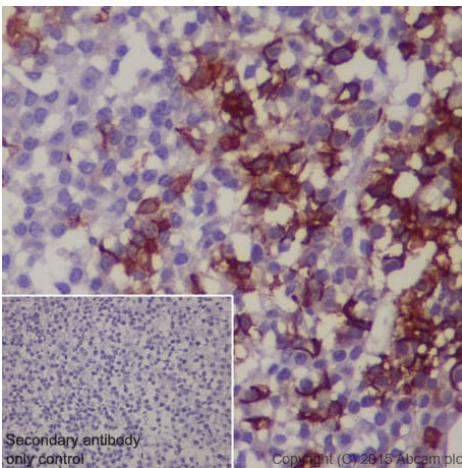
Immunohistochemical analysis of paraffin-embedded human colon cancer tissue labeling POMC with **ab210605** at 1/16000 dilution, followed by Goat Anti-Rabbit IgG H&L (HRP) (**ab97051**) at 1/500 dilution.

Negative staining on human colon cancer.

Counter stained with Hematoxylin.

This data was developed using the same antibody clone in a different buffer formulation containing PBS, BSA, glycerol, and sodium azide (**ab210605**).

Perform heat mediated antigen retrieval with Tris/EDTA buffer pH 9.0 before commencing with IHC staining protocol.



Immunohistochemistry (Formalin/PFA-fixed paraffin-embedded sections) - Anti-POMC antibody [EPR17571] - BSA and Azide free (ab222486)

Immunohistochemical analysis of paraffin-embedded mouse pituitary tissue labeling POMC with **ab210605** at 1/16000 dilution, followed by Goat Anti-Rabbit IgG H&L (HRP) (**ab97051**) at 1/500 dilution.

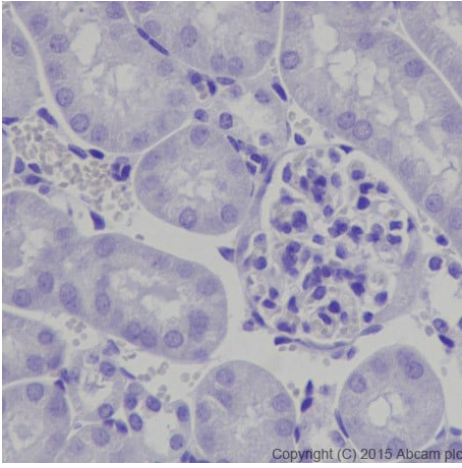
Cytoplasmic staining on mouse pituitary is observed.

Counter stained with Hematoxylin.

Secondary antibody only control: Used PBS instead of primary antibody, secondary antibody is Goat Anti-Rabbit IgG H&L (HRP) (**ab97051**) at 1/500 dilution.

This data was developed using the same antibody clone in a different buffer formulation containing PBS, BSA, glycerol, and sodium azide (**ab210605**).

Perform heat mediated antigen retrieval with Tris/EDTA buffer pH 9.0 before commencing with IHC staining protocol.



Immunohistochemistry (Formalin/PFA-fixed paraffin-embedded sections) - Anti-POMC antibody [EPR17571] - BSA and Azide free (ab222486)

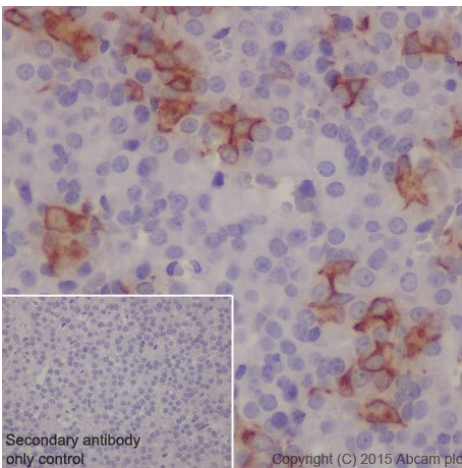
Immunohistochemical analysis of paraffin-embedded mouse kidney tissue labeling POMC with **ab210605** at 1/16000 dilution, followed by Goat Anti-Rabbit IgG H&L (HRP) (**ab97051**) at 1/500 dilution.

Negative staining on mouse kidney.

Counter stained with Hematoxylin.

This data was developed using the same antibody clone in a different buffer formulation containing PBS, BSA, glycerol, and sodium azide (**ab210605**).

Perform heat mediated antigen retrieval with Tris/EDTA buffer pH 9.0 before commencing with IHC staining protocol.



Immunohistochemistry (Formalin/PFA-fixed paraffin-embedded sections) - Anti-POMC antibody [EPR17571] - BSA and Azide free (ab222486)

Immunohistochemical analysis of paraffin-embedded rat pituitary tissue labeling POMC with **ab210605** at 1/16000 dilution, followed by Goat Anti-Rabbit IgG H&L (HRP) (**ab97051**) at 1/500 dilution.

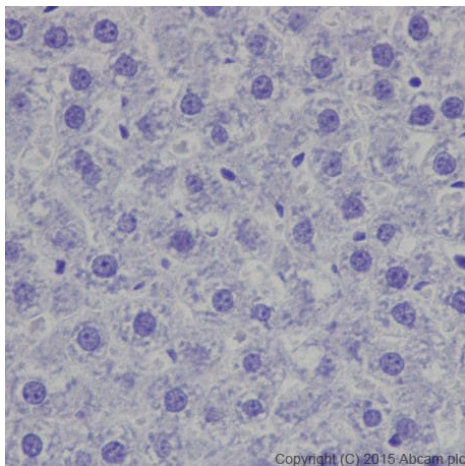
Cytoplasmic staining on rat pituitary is observed.

Counter stained with Hematoxylin.

Secondary antibody only control: Used PBS instead of primary antibody, secondary antibody is Goat Anti-Rabbit IgG H&L (HRP) (**ab97051**) at 1/500 dilution.

This data was developed using the same antibody clone in a different buffer formulation containing PBS, BSA, glycerol, and sodium azide (**ab210605**).

Perform heat mediated antigen retrieval with Tris/EDTA buffer pH 9.0 before commencing with IHC staining protocol.



Immunohistochemistry (Formalin/PFA-fixed paraffin-embedded sections) - Anti-POMC antibody [EPR17571] - BSA and Azide free (ab222486)

Immunohistochemical analysis of paraffin-embedded rat liver tissue labeling POMC with **ab210605** at 1/16000 dilution, followed by Goat Anti-Rabbit IgG H&L (HRP) (**ab97051**) at 1/500 dilution.

Negative staining on rat liver.

Counter stained with Hematoxylin.

This data was developed using the same antibody clone in a different buffer formulation containing PBS, BSA, glycerol, and sodium azide (**ab210605**).

Perform heat mediated antigen retrieval with Tris/EDTA buffer pH 9.0 before commencing with IHC staining protocol.

Why choose a recombinant antibody?



Research with confidence
Consistent and reproducible results



Long-term and scalable supply
Recombinant technology



Success from the first experiment
Confirmed specificity



Ethical standards compliant
Animal-free production

Anti-POMC antibody [EPR17571] - BSA and Azide free (ab222486)

Please note: All products are "FOR RESEARCH USE ONLY. NOT FOR USE IN DIAGNOSTIC PROCEDURES"

Our Abpromise to you: Quality guaranteed and expert technical support

- Replacement or refund for products not performing as stated on the datasheet
- Valid for 12 months from date of delivery
- Response to your inquiry within 24 hours
- We provide support in Chinese, English, French, German, Japanese and Spanish
- Extensive multi-media technical resources to help you
- We investigate all quality concerns to ensure our products perform to the highest standards

If the product does not perform as described on this datasheet, we will offer a refund or replacement. For full details of the Abpromise, please visit <https://www.abcam.cn/abpromise> or contact our technical team.

Terms and conditions

- Guarantee only valid for products bought direct from Abcam or one of our authorized distributors