

# Anti-Polyethylene glycol antibody [RM105] ab190652

重组

## 1 References 3 图像

### 概述

产品名称	Anti-Polyethylene glycol抗体[RM105]
描述	兔单克隆抗体[RM105] to Polyethylene glycol
宿主	Rabbit
经测试应用	<b>适用于:</b> ICC, WB, ELISA, IHC-P, Flow Cyt, IP
免疫原	Chemical/ Small Molecule corresponding to Polyethylene glycol conjugated to Keyhole Limpet Haemocyanin (KLH). (KLH-PEG with terminal methoxy group).
阳性对照	PEGylated BSA.
常规说明	Tween 20 usage: Tween 20 is a detergent that can interfere with ELISA and potentially other applications (often used in antibody dilution buffers, such as TBST) when using anti-PEG products. Our anti-mPEG antibody (RM105) reacts to the methoxy group of Polyethylene glycol (PEG). There is no methoxy group in Tween 20, which should not interfere with the function of this antibody. This detergent can safely be used in ELISA assays.

**Learn more about PEG RabMAb products and kit - [PEG RabMAb Product Portal Page](#)**

### 性能

形式	Liquid
存放说明	Shipped at 4°C. Store at +4°C short term (1-2 weeks). Upon delivery aliquot. Store at -20°C long term. Avoid freeze / thaw cycle.
存储溶液	Preservative: 0.09% Sodium azide Constituents: 1% BSA, 48% PBS, 50% Glycerol (glycerin, glycerine)
纯度	Protein A purified
纯化说明	ab190652 was purified from an animal origin-free and protein-free culture supernatant.
克隆	单克隆
克隆编号	RM105
同种型	IgG

### 应用

## The Abpromise guarantee

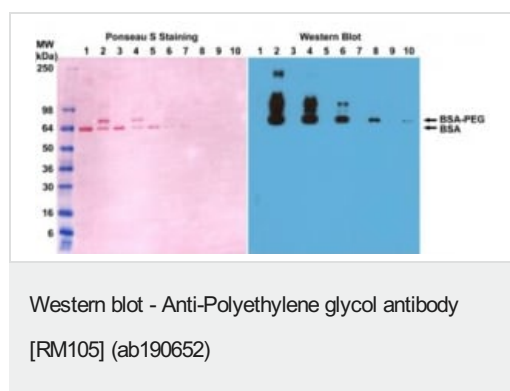
**Abpromise™** 承诺保证使用ab190652于以下的经测试应用

“应用说明”部分 下显示的仅为推荐的起始稀释度;实际最佳的稀释度/浓度应由使用者检定。

应用	Ab评论	说明
ICC		Use at an assay dependent concentration.
WB		Use a concentration of 0.05 - 1 µg/ml.
ELISA		Use a concentration of 0.01 - 0.3 mg/ml.
IHC-P		Use a concentration of 0.5 - 2 µg/ml.
Flow Cyt		Use at an assay dependent concentration. <b>ab172730</b> - Rabbit monoclonal IgG, is suitable for use as an isotype control with this antibody.
IP		Use at an assay dependent concentration.

## 靶标

## 图片



**All lanes :** Anti-Polyethylene glycol antibody [RM105] (ab190652)  
at 0.1 µg/ml

**Lane 1 :** BSA at 0.2 µg

**Lane 2 :** PEGylated BSA at 0.2 µg

**Lane 3 :** BSA at 0.1 µg

**Lane 4 :** PEGylated BSA at 0.1 µg

**Lane 5 :** BSA at 0.05 µg

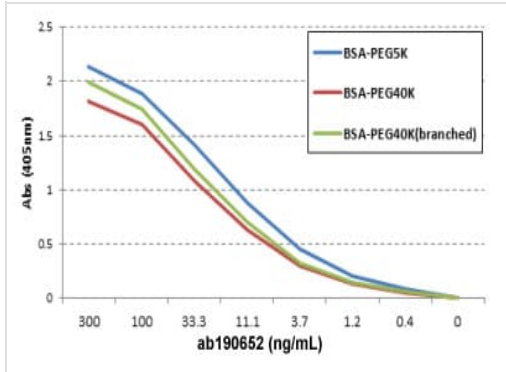
**Lane 6 :** PEGylated BSA at 0.05 µg

**Lane 7 :** BSA at 0.02 µg

**Lane 8 :** PEGylated BSA at 0.02 µg

**Lane 9 :** BSA at 0.01 µg

**Lane 10 :** PEGylated BSA at 0.01 µg



ELISA of three different PEGylated BSA using ab190652 at 0.3 µg/ml, following AP conjugated goat anti-rabbit IgG.

ELISA - Anti-Polyethylene glycol antibody [RM105]  
(ab190652)

### Why choose a recombinant antibody?

**Research with confidence**  
Consistent and reproducible results

**Long-term and scalable supply**  
Recombinant technology

**Success from the first experiment**  
Confirmed specificity

**Ethical standards compliant**  
Animal-free production

Anti-Polyethylene glycol antibody [RM105]  
(ab190652)

**Please note:** All products are "FOR RESEARCH USE ONLY. NOT FOR USE IN DIAGNOSTIC PROCEDURES"

### Our Promise to you: Quality guaranteed and expert technical support

- Replacement or refund for products not performing as stated on the datasheet
- Valid for 12 months from date of delivery
- Response to your inquiry within 24 hours
- We provide support in Chinese, English, French, German, Japanese and Spanish

- Extensive multi-media technical resources to help you
- We investigate all quality concerns to ensure our products perform to the highest standards

If the product does not perform as described on this datasheet, we will offer a refund or replacement. For full details of the Abpromise, please visit <https://www.abcam.cn/abpromise> or contact our technical team.

### **Terms and conditions**

---

- Guarantee only valid for products bought direct from Abcam or one of our authorized distributors