

Anti-POLG2 antibody ab201100

1 图像

概述

产品名称	Anti-POLG2抗体
描述	兔多克隆抗体to POLG2
宿主	Rabbit
经测试应用	适用于: WB
种属反应性	与反应: Mouse, Rat, Human
免疫原	Synthetic peptide corresponding to Human POLG2. Database link: Q9UHN1
阳性对照	HeLa, HepG2, H9C2 and SP20 whole cell lysates.
常规说明	<p>The Life Science industry has been in the grips of a reproducibility crisis for a number of years. Abcam is leading the way in addressing this with our range of recombinant monoclonal antibodies and knockout edited cell lines for gold-standard validation. Please check that this product meets your needs before purchasing.</p> <p>If you have any questions, special requirements or concerns, please send us an inquiry and/or contact our Support team ahead of purchase. Recommended alternatives for this product can be found below, along with publications, customer reviews and Q&As</p>

性能

形式	Liquid
存放说明	Shipped at 4°C. Store at +4°C short term (1-2 weeks). Upon delivery aliquot. Store at -20°C long term. Avoid freeze / thaw cycle.
存储溶液	pH: 7.30 Preservative: 0.05% Sodium azide Constituent: 99% PBS
纯度	Immunogen affinity purified
纯化说明	ab201100 was affinity-purified from rabbit antiserum by affinity-chromatography using epitope-specific immunogen and the purity is > 95% (by SDS-PAGE).
克隆	多克隆
同种型	IgG

应用

The Abpromise guarantee

Abpromise™承诺保证使用ab201100于以下的经测试应用

“应用说明”部分 下显示的仅为推荐的起始稀释度;实际最佳的稀释度/浓度应由使用者检定。

应用	Ab评论	说明
WB		1/500 - 1/1000. Predicted molecular weight: 55 kDa.

靶标

功能

Mitochondrial polymerase processivity subunit. Stimulates the polymerase and exonuclease activities, and increases the processivity of the enzyme. Binds to ss-DNA.

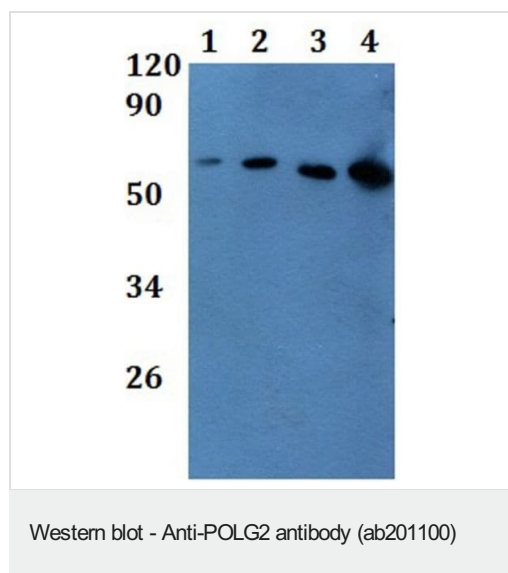
疾病相关

Defects in POLG2 are the cause of progressive external ophthalmoplegia with mitochondrial DNA deletions autosomal dominant type 4 (PEOA4) [MIM:610131]. Progressive external ophthalmoplegia is characterized by progressive weakness of ocular muscles and levator muscle of the upper eyelid. In a minority of cases, it is associated with skeletal myopathy, which predominantly involves axial or proximal muscles and which causes abnormal fatigability and even permanent muscle weakness. Ragged-red fibers and atrophy are found on muscle biopsy. A large proportion of chronic ophthalmoplegias are associated with other symptoms, leading to a multisystemic pattern of this disease. Additional symptoms are variable, and may include cataracts, hearing loss, sensory axonal neuropathy, ataxia, depression, hypogonadism, and parkinsonism.

细胞定位

Mitochondrion.

图片



All lanes : Anti-POLG2 antibody (ab201100)

Lane 1 : A549 whole cell lysate

Lane 2 : HeLa whole cell lysate

Lane 3 : H9C2 whole cell lysate

Lane 4 : SP20 whole cell lysate

Predicted band size: 55 kDa

Please note: All products are "FOR RESEARCH USE ONLY. NOT FOR USE IN DIAGNOSTIC PROCEDURES"

Our Abpromise to you: Quality guaranteed and expert technical support

- Replacement or refund for products not performing as stated on the datasheet
- Valid for 12 months from date of delivery
- Response to your inquiry within 24 hours

- We provide support in Chinese, English, French, German, Japanese and Spanish
- Extensive multi-media technical resources to help you
- We investigate all quality concerns to ensure our products perform to the highest standards

If the product does not perform as described on this datasheet, we will offer a refund or replacement. For full details of the Abpromise, please visit <https://www.abcam.cn/abpromise> or contact our technical team.

Terms and conditions

- Guarantee only valid for products bought direct from Abcam or one of our authorized distributors