

Anti-POLDIP2 antibody ab68663

敲除 验证

2 图像

概述

产品名称	Anti-POLDIP2抗体
描述	兔多克隆抗体to POLDIP2
宿主	Rabbit
经测试应用	适用于: WB
种属反应性	与反应: Human 预测可用于: Mouse, Rat, Chicken, Cow 
免疫原	Synthetic peptide. This information is proprietary to Abcam and/or its suppliers.
阳性对照	This antibody gave a positive signal in Human Liver Tissue Lysate.
常规说明	<p>The Life Science industry has been in the grips of a reproducibility crisis for a number of years. Abcam is leading the way in addressing this with our range of recombinant monoclonal antibodies and knockout edited cell lines for gold-standard validation. Please check that this product meets your needs before purchasing.</p> <p>If you have any questions, special requirements or concerns, please send us an inquiry and/or contact our Support team ahead of purchase. Recommended alternatives for this product can be found below, along with publications, customer reviews and Q&As</p>

性能

形式	Liquid
存放说明	Shipped at 4°C. Store at +4°C short term (1-2 weeks). Upon delivery aliquot. Store at -20°C or -80°C. Avoid freeze / thaw cycle.
存储溶液	<p>pH: 7.40</p> <p>Preservative: 0.02% Sodium azide</p> <p>Constituent: PBS</p> <p>Batches of this product that have a concentration < 1mg/ml may have BSA added as a stabilising agent. If you would like information about the formulation of a specific lot, please contact our scientific support team who will be happy to help.</p>
纯度	Immunogen affinity purified

克隆

多克隆

同种型

IgG

应用

The Abpromise guarantee

Abpromise™承诺保证使用ab68663于以下的经测试应用

“应用说明”部分 下显示的仅为推荐的起始稀释度;实际最佳的稀释度/浓度应由使用者检定。

应用	Ab评论	说明
WB		Use a concentration of 1 µg/ml. Detects a band of approximately 42 kDa (predicted molecular weight: 42 kDa).

靶标

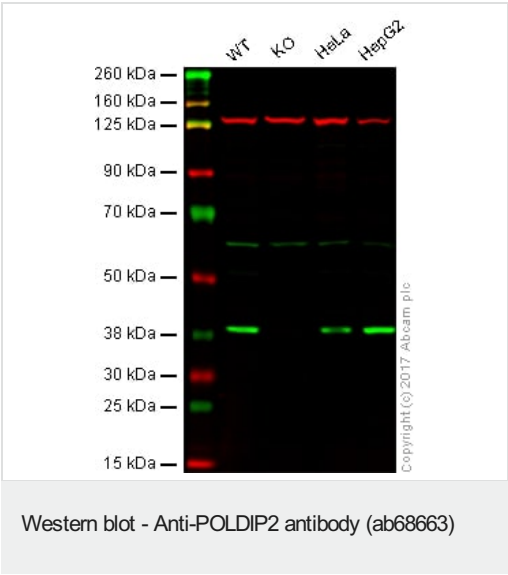
序列相似性

Contains 1 apaG domain.

细胞定位

Nucleus.

图片



Lane 1: Wild-type HAP1 whole cell lysate (20 µg)

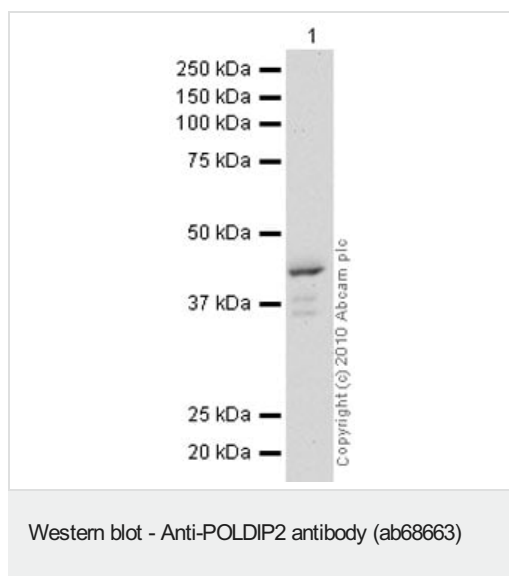
Lane 2: POLDIP2 knockout HAP1 whole cell lysate (20 µg)

Lane 3: HeLa whole cell lysate (20 µg)

Lane 4: HepG2 whole cell lysate (20 µg)

Lanes 1 - 4: Merged signal (red and green). Green - ab68663 observed at 40 kDa. Red - loading control, [ab18058](#), observed at 130 kDa.

ab68663 was shown to specifically recognize POLDIP2 in wild-type HAP1 cells along with additional cross reactive bands. No band was observed when POLDIP2 knockout cells were examined. Wild-type and POLDIP2 knockout samples were subjected to SDS-PAGE. ab68663 and [ab18058](#) (Mouse anti-Vinculin loading control) were incubated overnight at 4°C at 1 µg/ml and 1/20,000 dilution respectively. Blots were developed with Goat anti-Rabbit IgG H&L (IRDye® 800CW) preabsorbed ([ab216773](#)) and Goat anti-Mouse IgG H&L (IRDye® 680RD) preabsorbed ([ab216776](#)) secondary antibodies at 1/20,000 dilution for 1 hour at room temperature before imaging.



Anti-POLDIP2 antibody (ab68663) at 1 µg/ml + Liver (Human)
Tissue Lysate at 10 µg

Secondary

Goat polyclonal to Rabbit IgG - H&L - Pre-Adsorbed (HRP) at
1/3000 dilution

Developed using the ECL technique.

Performed under reducing conditions.

Predicted band size: 42 kDa

Exposure time: 20 minutes

Please note: All products are "FOR RESEARCH USE ONLY. NOT FOR USE IN DIAGNOSTIC PROCEDURES"

Our Abpromise to you: Quality guaranteed and expert technical support

- Replacement or refund for products not performing as stated on the datasheet
- Valid for 12 months from date of delivery
- Response to your inquiry within 24 hours
- We provide support in Chinese, English, French, German, Japanese and Spanish
- Extensive multi-media technical resources to help you
- We investigate all quality concerns to ensure our products perform to the highest standards

If the product does not perform as described on this datasheet, we will offer a refund or replacement. For full details of the Abpromise, please visit <https://www.abcam.cn/abpromise> or contact our technical team.

Terms and conditions

- Guarantee only valid for products bought direct from Abcam or one of our authorized distributors