

### Anti-POLD1 antibody [EPR15118] ab186407

**重组** RabMAb

**10 References**   **9 图像**

#### 概述

产品名称	Anti-POLD1抗体[EPR15118]
描述	兔单克隆抗体[EPR15118] to POLD1
宿主	Rabbit
经测试应用	<b>适用于:</b> Flow Cyt (Intra), WB, IHC-P, ICC/IF
种属反应性	<b>与反应:</b> Mouse, Rat, Human
免疫原	Synthetic peptide. This information is proprietary to Abcam and/or its suppliers.
阳性对照	MOLT4, HeLa, Jurkat, K562, C6, Raw264.7 and PC12 cell lysates; Human cervix carcinoma and colon tissues; HeLa and K562 cells.
常规说明	<p>This product is a recombinant monoclonal antibody, which offers several advantages including:</p> <ul style="list-style-type: none"> <li>- High batch-to-batch consistency and reproducibility</li> <li>- Improved sensitivity and specificity</li> <li>- Long-term security of supply</li> <li>- Animal-free production</li> </ul> <p>For more information <a href="#">see here</a>.</p> <p>Our RabMAb<sup>®</sup> technology is a patented hybridoma-based technology for making rabbit monoclonal antibodies. For details on our patents, please refer to <a href="#">RabMAb<sup>®</sup> patents</a>.</p>

#### 性能

形式	Liquid
存放说明	Shipped at 4°C. Store at +4°C short term (1-2 weeks). Upon delivery aliquot. Store at -20°C long term. Avoid freeze / thaw cycle.
存储溶液	<p>pH: 7.2</p> <p>Preservative: 0.01% Sodium azide</p> <p>Constituents: 59% PBS, 40% Glycerol (glycerin, glycerine), 0.05% BSA</p>
纯度	Protein A purified
克隆	单克隆
克隆编号	EPR15118
同种型	IgG

应用

**The Abpromise guarantee**      **Abpromise™**承诺保证使用ab186407于以下的经测试应用

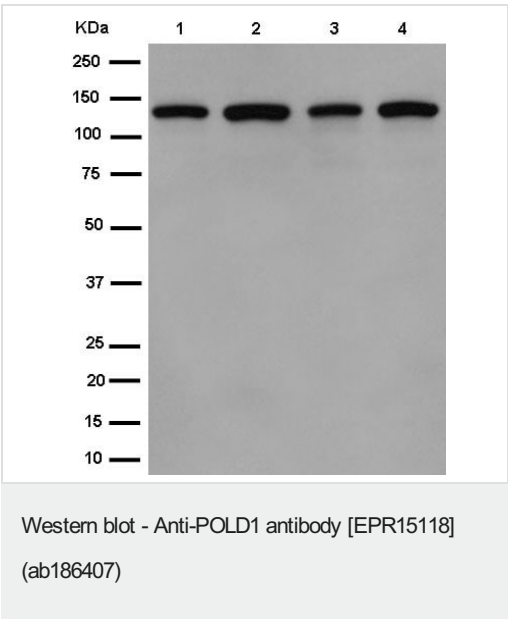
“应用说明”部分 下显示的仅为推荐的起始稀释度;实际最佳的稀释度/浓度应由使用者检定。

应用	Ab评论	说明
Flow Cyt (Intra)		1/250.
WB		1/1000 - 1/10000. Detects a band of approximately 124 kDa (predicted molecular weight: 124 kDa).
IHC-P		1/50 - 1/100. Perform heat mediated antigen retrieval with Tris/EDTA buffer pH 9.0 before commencing with IHC staining protocol.
ICC/IF		1/250.

靶标

功能	Possesses two enzymatic activities: DNA synthesis (polymerase) and an exonucleolytic activity that degrades single stranded DNA in the 3'- to 5'-direction. Required with its accessory proteins (proliferating cell nuclear antigen (PCNA) and replication factor C (RFC) or activator 1) for leading strand synthesis. Also involved in completing Okazaki fragments initiated by the DNA polymerase alpha/primase complex.
序列相似性	Belongs to the DNA polymerase type-B family.
细胞定位	Nucleus.

图片



**All lanes :** Anti-POLD1 antibody [EPR15118] (ab186407) at 1/10000 dilution

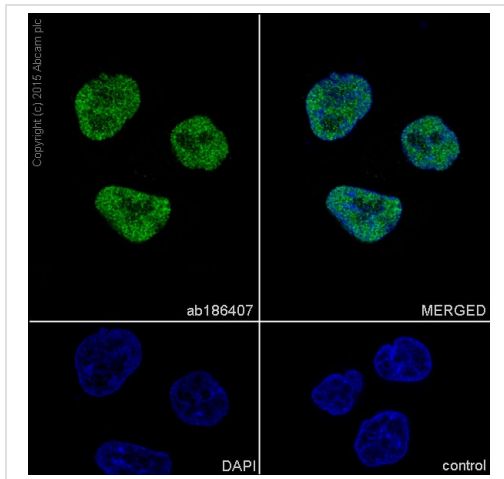
- Lane 1 :** MOLT4 cell lysate
- Lane 2 :** HeLa cell lysate
- Lane 3 :** Jurkat cell lysate
- Lane 4 :** K562 cell lysate

Lysates/proteins at 20 µg per lane.

**Secondary**

**All lanes :** Goat anti-rabbit IgG, (H+L), peroxidase conjugate at 1/1000 dilution

**Predicted band size:** 124 kDa  
**Observed band size:** 124 kDa

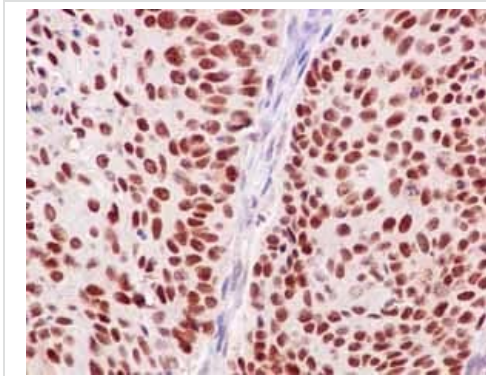


Immunocytochemistry/ Immunofluorescence - Anti-POLD1 antibody [EPR15118] (ab186407)

ab186407 staining POLD1, catalytic subunit in HeLa (human cervix adenocarcinoma) cells by ICC/IF

(Immunocytochemistry/immunofluorescence). Cells were fixed with 4% Paraformaldehyde and permeabilized with 0.1% Triton X-100. Samples were incubated with primary antibody at a dilution of 1/500. A goat anti rabbit IgG (Alexa Fluor® 488) (**ab150077**) was used as the secondary antibody at a dilution of 1/1000. DAPI was used as a nuclear counterstain.

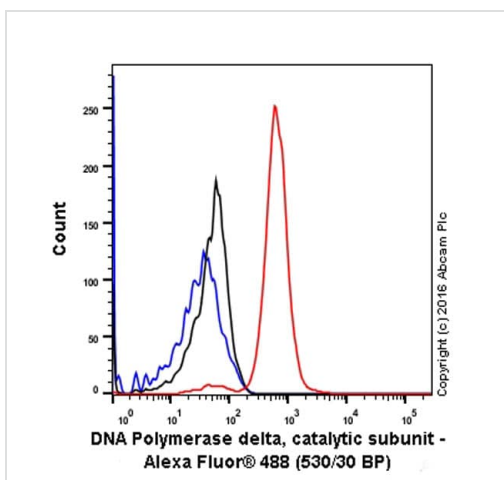
Control: PBS only



Immunohistochemistry (Formalin/PFA-fixed paraffin-embedded sections) - Anti-POLD1 antibody [EPR15118] (ab186407)

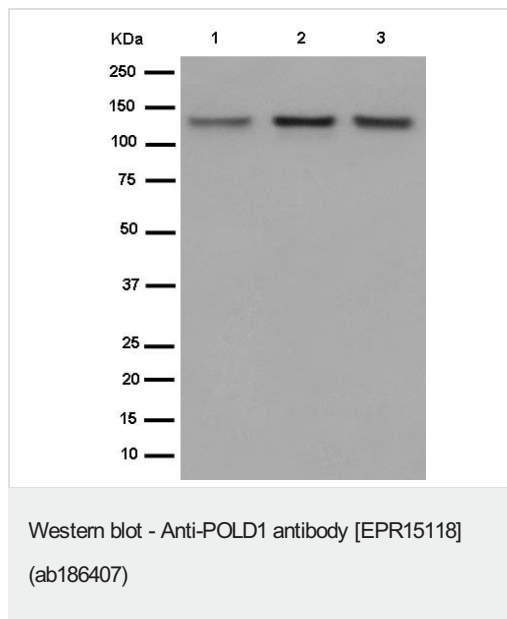
Immunohistochemical analysis of paraffin-embedded Human cervix carcinoma tissue labeling POLD1, catalytic subunit with ab186407 at 1/100 dilution followed by prediluted HRP Polymer for Rabbit IgG. Counter stained with Hematoxylin.

Perform heat mediated antigen retrieval with EDTA buffer pH 9 before commencing with IHC staining protocol.



Flow Cytometry (Intracellular) - Anti-POLD1 antibody [EPR15118] (ab186407)

Intracellular Flow Cytometry analysis of HeLa (human cervix adenocarcinoma) cells labelling POLD1, catalytic subunit (red) with purified ab186407 at a dilution of 1/250. The secondary antibody used was Alexa Fluor® 488 goat-anti-rabbit IgG (1/2000). Cells were fixed with 4% paraformaldehyde and permeabilised with 90% methanol. Isotype control antibody was rabbit monoclonal IgG (black). The blue line shows cells without incubation with primary and secondary antibody.



**All lanes :** Anti-POLD1 antibody [EPR15118] (ab186407) at 1/1000 dilution

**Lane 1 :** C6 cell lysate

**Lane 2 :** Raw264.7 cell lysate

**Lane 3 :** PC12 cell lysate

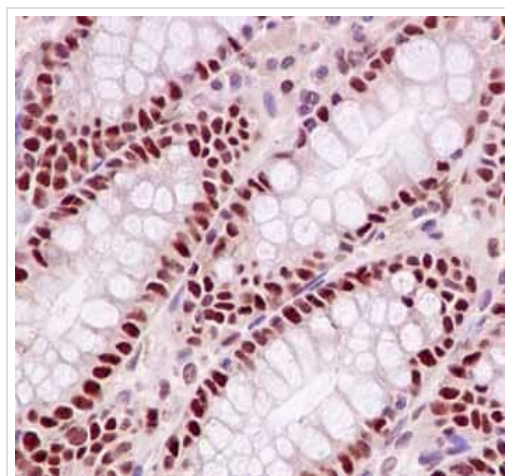
Lysates/proteins at 10 µg per lane.

#### Secondary

**All lanes :** Goat anti-rabbit IgG, (H+L), peroxidase conjugate at 1/1000 dilution

**Predicted band size:** 124 kDa

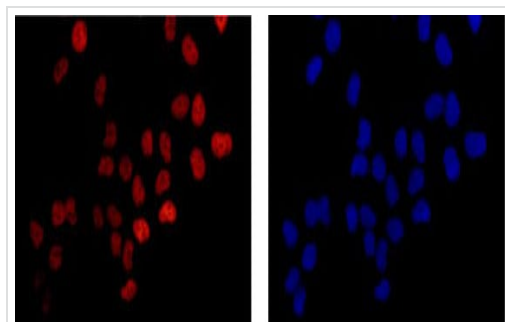
**Observed band size:** 124 kDa



Immunohistochemistry (Formalin/PFA-fixed paraffin-embedded sections) - Anti-POLD1 antibody [EPR15118] (ab186407)

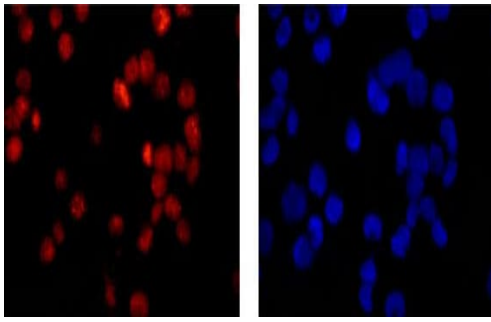
Immunohistochemical analysis of paraffin-embedded Human colon tissue labeling POLD1, catalytic subunit with ab186407 at 1/100 dilution, followed by prediluted HRP Polymer for Rabbit IgG. Counter stained with Hematoxylin.

Perform heat mediated antigen retrieval with EDTA buffer pH 9 before commencing with IHC staining protocol.



Immunocytochemistry/ Immunofluorescence - Anti-POLD1 antibody [EPR15118] (ab186407)

Immunofluorescent analysis of 4% paraformaldehyde-fixed HeLa cells labeling POLD1, catalytic subunit with ab186407 at 1/250 dilution followed by Goat anti rabbit IgG (Alexa Fluor® 555) secondary antibody at 1/200 dilution. Counter stained with Dapi (blue).



Immunocytochemistry/ Immunofluorescence - Anti-POLD1 antibody [EPR15118] (ab186407)

Immunofluorescent analysis of acetone-fixed K562 cells labeling POLD1, catalytic subunit with ab186407 at 1/250 dilution, followed by Goat anti rabbit IgG (Alexa Fluor® 555) secondary antibody at 1/200 dilution. Counter stained with Dapi (blue).

#### Why choose a recombinant antibody?



Anti-POLD1 antibody [EPR15118] (ab186407)

**Please note:** All products are "FOR RESEARCH USE ONLY. NOT FOR USE IN DIAGNOSTIC PROCEDURES"

#### Our Abpromise to you: Quality guaranteed and expert technical support

- Replacement or refund for products not performing as stated on the datasheet
- Valid for 12 months from date of delivery
- Response to your inquiry within 24 hours
- We provide support in Chinese, English, French, German, Japanese and Spanish
- Extensive multi-media technical resources to help you
- We investigate all quality concerns to ensure our products perform to the highest standards

If the product does not perform as described on this datasheet, we will offer a refund or replacement. For full details of the Abpromise, please visit <https://www.abcam.cn/abpromise> or contact our technical team.

#### Terms and conditions

- Guarantee only valid for products bought direct from Abcam or one of our authorized distributors