

### Anti-Plzf antibody [5B3] ab104854

★ ★ ★ ★ ★ [2 Abreviews](#) [15 References](#) [3 图像](#)

#### 概述

产品名称	Anti-Plzf抗体[5B3]
描述	小鼠单克隆抗体[5B3] to Plzf
宿主	Mouse
经测试应用	适用于: WB, ICC/IF, Flow Cyt
种属反应性	与反应: Human
免疫原	Purified recombinant fragment of Human Plzf expressed in E. Coli.
阳性对照	HeLa whole cell lysate ( <a href="#">ab150035</a> ). HeLa cells
常规说明	<p>This product was changed from ascites to supernatant. Lot no's high than GR161367-22 are from Tissue Culture Supernatant</p> <p>The Life Science industry has been in the grips of a reproducibility crisis for a number of years. Abcam is leading the way in addressing this with our range of recombinant monoclonal antibodies and knockout edited cell lines for gold-standard validation. Please check that this product meets your needs before purchasing.</p> <p>If you have any questions, special requirements or concerns, please send us an inquiry and/or contact our Support team ahead of purchase. Recommended alternatives for this product can be found below, along with publications, customer reviews and Q&amp;As</p>

#### 性能

形式	Liquid
存放说明	Shipped at 4°C. Store at +4°C short term (1-2 weeks). Store at -20°C long term.
存储溶液	Preservative: 0.05% Sodium azide Constituent: PBS
纯度	Protein G purified
纯化说明	Purified from tissue culture supernatant.
克隆	单克隆
克隆编号	5B3
同种型	IgG1

## 应用

### The Abpromise guarantee

**Abpromise™** 承诺保证使用ab104854于以下的经测试应用

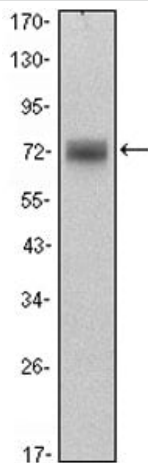
“应用说明”部分 下显示的仅为推荐的起始稀释度;实际最佳的稀释度/浓度应由使用者检定。

应用	Ab评论	说明
WB		1/500 - 1/2000. Predicted molecular weight: 74 kDa.
ICC/IF		Use at an assay dependent concentration.
Flow Cyt		1/50. <b>ab170190</b> - Mouse monoclonal IgG1, is suitable for use as an isotype control with this antibody.

## 靶标

功能	Probable transcription factor. May play a role in myeloid maturation and in the development and/or maintenance of other differentiated tissues. Probable substrate-recognition component of an E3 ubiquitin-protein ligase complex which mediates the ubiquitination and subsequent proteasomal degradation of target proteins.
组织特异性	Within the hematopoietic system, PLZF is expressed in bone marrow, early myeloid cell lines and peripheral blood mononuclear cells. Also expressed in the ovary, and at lower levels, in the kidney and lung.
通路	Protein modification; protein ubiquitination.
疾病相关	Skeletal defects, genital hypoplasia, and mental retardation A chromosomal aberration involving ZBTB16 may be a cause of acute promyelocytic leukemia (APL). Translocation t(11;17)(q32;q21) with RARA.
序列相似性	Belongs to the krueppel C2H2-type zinc-finger protein family. Contains 1 BTB (POZ) domain. Contains 9 C2H2-type zinc fingers.
细胞定位	Nucleus.

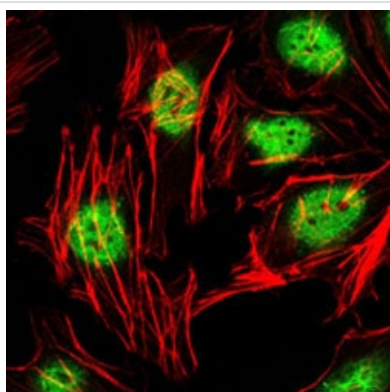
## 图片



Western blot - Anti-Plzf antibody [5B3] (ab104854)

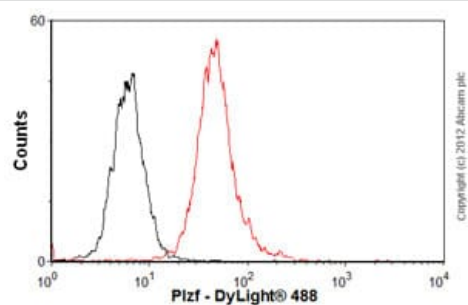
Anti-Plzf antibody [5B3] (ab104854) at 1/500 dilution + HeLa cell lysate

**Predicted band size:** 74 kDa



Immunocytochemistry/ Immunofluorescence - Anti-Plzf antibody [5B3] (ab104854)

Immunofluorescence analysis of HeLa cells using ab104854 (green). Red: Actin filaments have been labeled with Alexa Fluor-555 phalloidin.



Flow Cytometry - Anti-Plzf antibody [5B3] (ab104854)

Overlay histogram showing K562 cells stained with ab104854 (red line). The cells were fixed with 80% methanol (5 min) and then permeabilized with 0.1% PBS-Tween for 20 min. The cells were then incubated in 1x PBS / 10% normal goat serum / 0.3M glycine to block non-specific protein-protein interactions. The cells were then incubated with the antibody (ab104854, 1/50 dilution) for 30 min at 22°C. The secondary antibody used was DyLight® 488 goat anti-mouse IgG (H+L) ([ab96879](#)) at 1/500 dilution for 30 min at 22°C. Isotype control antibody (black line) was mouse IgG1 [ICIGG1] ([ab91353](#), 2µg/1x10<sup>6</sup> cells) used under the same conditions. Acquisition of >5,000 events was performed.

**Please note:** All products are "FOR RESEARCH USE ONLY. NOT FOR USE IN DIAGNOSTIC PROCEDURES"

**Our Abpromise to you: Quality guaranteed and expert technical support**

- Replacement or refund for products not performing as stated on the datasheet
- Valid for 12 months from date of delivery
- Response to your inquiry within 24 hours
- We provide support in Chinese, English, French, German, Japanese and Spanish
- Extensive multi-media technical resources to help you
- We investigate all quality concerns to ensure our products perform to the highest standards

If the product does not perform as described on this datasheet, we will offer a refund or replacement. For full details of the Abpromise, please visit <https://www.abcam.cn/abpromise> or contact our technical team.

#### **Terms and conditions**

---

- Guarantee only valid for products bought direct from Abcam or one of our authorized distributors