

Anti-Plxdc2 antibody ab67225

4 图像

概述	
产品名称	Anti-Plxdc2抗体
描述	兔多克隆抗体to Plxdc2
宿主	Rabbit
经测试应用	适用于: WB, ICC/IF, IHC-P
种属反应性	与反应: Mouse, Human
免疫原	An 18 amino acid peptide from near the amino terminus of human Plxdc2.
阳性对照	WB: Human brain tissue lysate; Mouse cerebrum tissue lysate. IHC-P: Human brain tissue. ICC/IF: Human brain cells.
常规说明	<p>The Life Science industry has been in the grips of a reproducibility crisis for a number of years. Abcam is leading the way in addressing this with our range of recombinant monoclonal antibodies and knockout edited cell lines for gold-standard validation. Please check that this product meets your needs before purchasing.</p> <p>If you have any questions, special requirements or concerns, please send us an inquiry and/or contact our Support team ahead of purchase. Recommended alternatives for this product can be found below, along with publications, customer reviews and Q&As</p>
性能	
形式	Liquid
存放说明	Shipped at 4°C. Store at +4°C.
存储溶液	pH: 7.2 Preservative: 0.02% Sodium azide Constituent: PBS
纯度	Immunogen affinity purified
克隆	多克隆
同种型	IgG
应用	

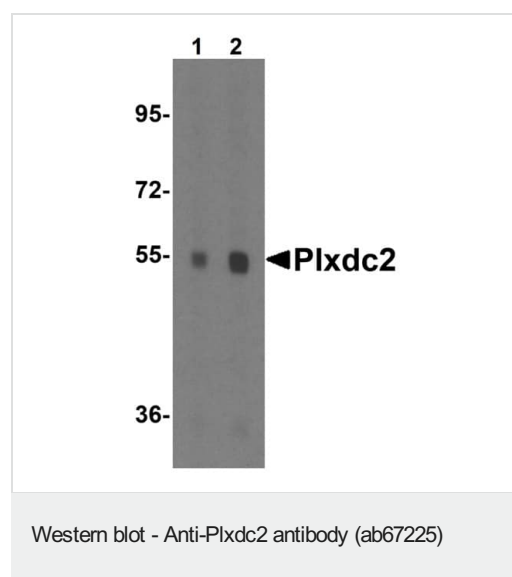
“应用说明”部分 下显示的仅为推荐的起始稀释度;实际最佳的稀释度/浓度应由使用者检定。

应用	Ab评论	说明
WB		Use a concentration of 0.5 - 1 µg/ml. Detects a band of approximately 60 kDa (predicted molecular weight: 60 kDa).
ICC/IF		Use a concentration of 20 µg/ml.
IHC-P		Use at an assay dependent concentration.

靶标

功能	May play a role in tumor angiogenesis.
组织特异性	Expressed in the endothelial cells of the stroma but not in the endothelial cells of normal colonic tissue.
序列相似性	Belongs to the plexin family. Contains 1 PSI domain.
细胞定位	Membrane.

图片

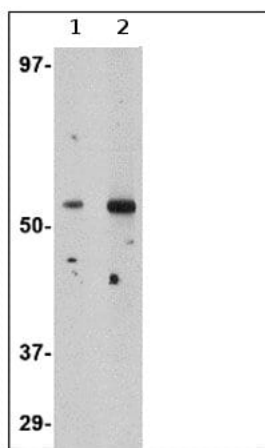


Lane 1 : Anti-Plxdc2 antibody (ab67225) at 1 µg/ml

Lane 2 : Anti-Plxdc2 antibody (ab67225) at 2 µg/ml

All lanes : Mouse cerebrum tissue lysate

Predicted band size: 60 kDa



Western blot - Anti-Plxdc2 antibody (ab67225)

Lane 1 : Anti-Plxdc2 antibody (ab67225) at 0.5 µg/ml

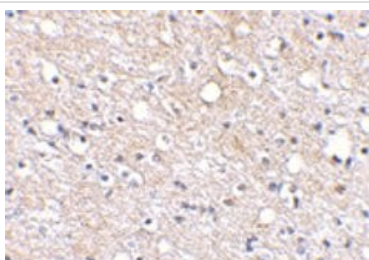
Lane 2 : Anti-Plxdc2 antibody (ab67225) at 1 µg/ml

All lanes : human brain tissue lysate

Lysates/proteins at 15 µg per lane.

Predicted band size: 60 kDa

Observed band size: 60 kDa



Immunohistochemistry (Formalin/PFA-fixed paraffin-embedded sections) - Anti-Plxdc2 antibody (ab67225)

ab67225 at 2.5µg/ml staining of Plxdc2 in human brain tissue using IHC-P.

Immunocytochemistry/ Immunofluorescence - Anti-Plxdc2 antibody (ab67225)

Immunofluorescence of Plxdc2 in Human Brain cells using ab67225 at 20 ug/ml.

Please note: All products are "FOR RESEARCH USE ONLY. NOT FOR USE IN DIAGNOSTIC PROCEDURES"

Our Abpromise to you: Quality guaranteed and expert technical support

- Replacement or refund for products not performing as stated on the datasheet

- Valid for 12 months from date of delivery
- Response to your inquiry within 24 hours
- We provide support in Chinese, English, French, German, Japanese and Spanish
- Extensive multi-media technical resources to help you
- We investigate all quality concerns to ensure our products perform to the highest standards

If the product does not perform as described on this datasheet, we will offer a refund or replacement. For full details of the Abpromise, please visit <https://www.abcam.cn/abpromise> or contact our technical team.

Terms and conditions

- Guarantee only valid for products bought direct from Abcam or one of our authorized distributors